

Trial Court Facility Modification Advisory Committee Meeting

The background of the slide features a large, faint, blue-tinted seal of the Judicial Council of California. The seal is circular and contains the text "JUDICIAL COUNCIL OF CALIFORNIA" around the perimeter. In the center, there is a figure holding a scale of justice, with the word "EUREKA" above it. Below the figure, the year "1926" is visible. The seal also includes various symbols representing the state's history and industry, such as ships and a bear.

July 17, 2015

Call to Order and Roll Call

- Chair Call to Order and Opening Comments
- Roll Call
 - Trial Court Facility Modification Advisory Committee Chair
 - Trial Court Facility Modification Advisory Committee Members
 - Real Estate and Facility Management
 - Capital Program Staff
 - Guests



Consent Calendar

- Minutes from meeting on May 22, 2015



Action Item 1

List A – Emergency Facility Modification Funding (Priority 1)

- There were 49 new Priority 1 FMs this period
- Total estimated FM Program budget share is \$1,116,044



Action Item 2

List B – Facility Modifications Less than \$50K (Priority 2)

- There were 166 new FMs Less than \$50K this period
- Total estimated FM Program budget share is \$1,322,178



The background of the slide features a large, faint, circular seal of the Fiscal Council of California. The seal contains the text "FISCAL COUNCIL OF CALIFORNIA" around the top and "1926" at the bottom. In the center of the seal is a figure holding a spear, with a bear and a plow below. The seal is rendered in a light blue color that blends with the dark blue background.

Action Item 3

List C – Cost Increases Over \$50K

There were three cost increases in excess of \$50,000, totaling \$744,008, with a total cost increase of \$604,788 to the FM Program Budget.

Action Item 3

List C – Cost Increases Over \$50K

County	Building	Building ID	FM ID	Original Funded Cost	Current Cost Estimate	Amount of Increase
Los Angeles	Compton Courthouse	19-AG1	FM-0030727	\$2,974,988	\$3,483,599	\$508,611

Reason for Increase: This project was previously funded in FY 2011-2012. Due to fund reversion in June 2015 and additional scope required by the State Fire Marshal to bring the elevator systems up to code, the project requires a total of \$508,611 of additional funding. The State's share of this funding is \$398,987. Shared cost is allocated based on the common and exclusive use per elevator system.

Notes: FM Program budget share is 74.85%



Action Item 3

List C – Cost Increases Over \$50K

County	Building	Building ID	FM ID	Original Funded Cost	Current Cost Estimate	Amount of Increase
Los Angeles	Metropolitan Courthouse	19-T1	FM-0050342	\$210,000 (FY12-13)	\$162,857 (FY15-16)	\$138,836 (FY15-16)

Reason for Increase: This project was previously funded in FY 2012-2013 for \$210,000, however, only \$24,021.09 was expended and the rest reverted. The total project cost is now \$162,857, less the amount that was previously spent, this creates a need of \$138,836 to be funded from FY 2015-2016 for project completion.

Notes: FM Program budget share is 100%



Action Item 3

List C – Cost Increases Over \$50K

County	Building	Building ID	FM ID	Original Funded Cost	Current Cost Estimate	Amount of Increase
Los Angeles	Pasadena Courthouse	19-J1	FM-0054226	\$13,961	\$110,522	\$96,561
<p>Reason for Increase: Cost escalation due to additional emergency remediation efforts.</p>						
<p>Notes: FM Program budget share 69.35%, therefore cost increase to FM Program budget is \$66,965.</p>						



Action Item 3

Summary of List C – Cost Increases Over \$50k

FM Number	County	Building	Total Cost Increase to FM Program Budget
FM-0030727	Los Angeles	Compton Courthouse	\$398,987
FM-0050342	Los Angeles	Metropolitan Courthouse	\$138,836
FM-0054226	Los Angeles	Pasadena Courthouse	\$66,965
	Total		\$604,788



Action Item 4

List D – Facility Modifications Over \$50K

Items 1-23 are recommended for funding

Total estimated amount of FM Program
budget share is \$4,502,970



Action Item 5

List F – Court-Funded Facilities Requests (CFRs) Facility Modifications

- Fresno – County Courthouse
 - Fire Suppression System \$20,460



Discussion Item 1

List E – Funded Facility Modifications On Hold

- 22 FMs on hold pending Project Manager resources and/or county shared cost approval
- Total estimated FM Program budget share is \$8,192,071



Discussion Item 2

Solano Hall of Justice

Flood Protection Project

- FM-0040733
- Phase 1 Study & Design Approved
- \$319,759



- Phase 2 in Planning- \$1M+
- Current Status – Phase 1 Design pending County Board of Sup for additional funding approval.



JUDICIAL COUNCIL
OF CALIFORNIA

Fairfield Justice Campus Flood Protection



- Overview
- Past Events
- Affected Jurisdictions
- Project Definition
- Next Steps
- Questions & Answers



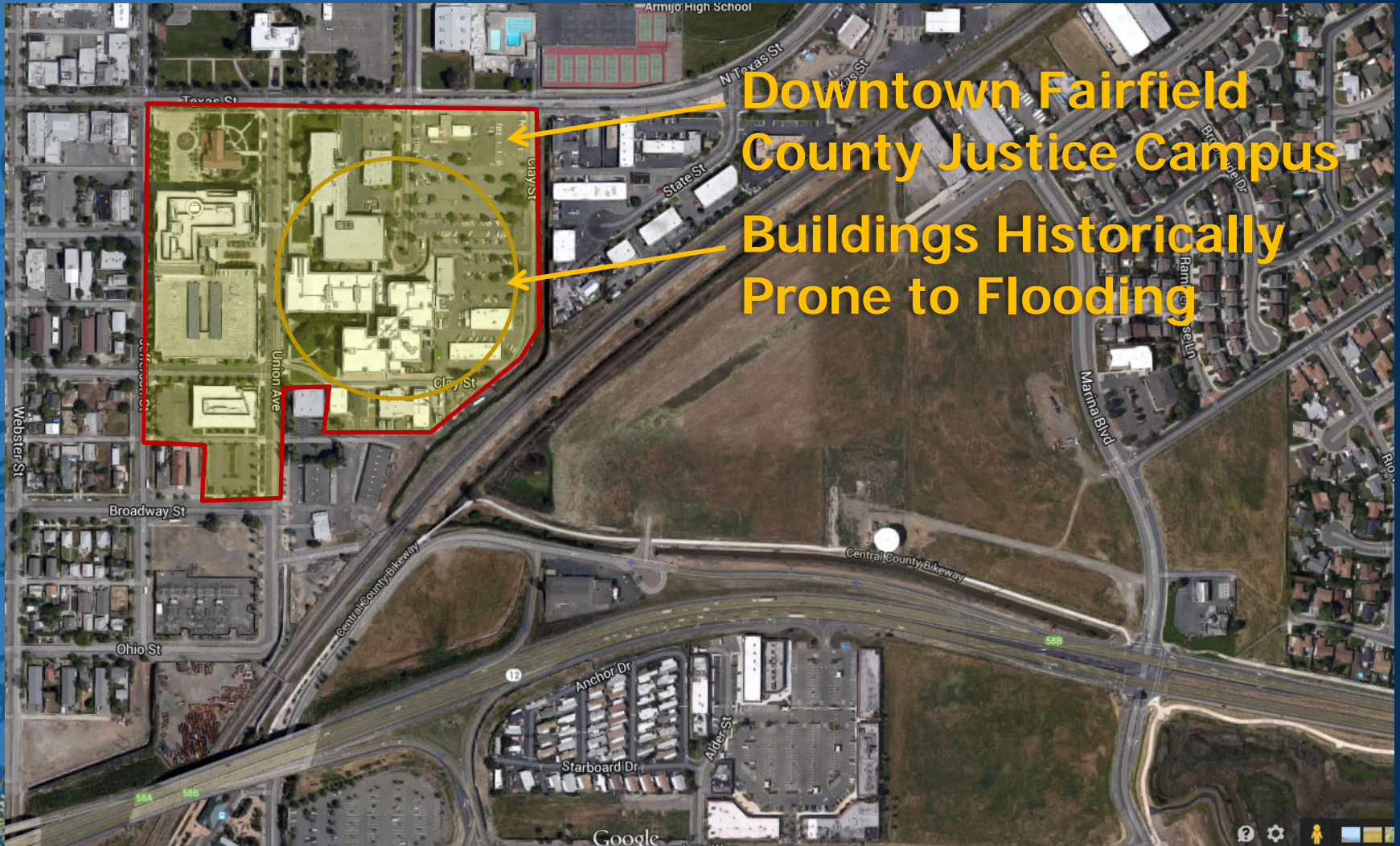
JUDICIAL COUNCIL
OF CALIFORNIA

Overview

- Over the past 3 decades, region had local flooding incidences
- Created by region's geographic location and inadequate storm water infrastructure
- Limited water holding capacities are compounded by storm surges which increase impact to region
- Greatest impact during high-tide conditions combined with westerly storm winds



Site Area



**Downtown Fairfield
County Justice Campus
Buildings Historically
Prone to Flooding**

Past Storm Events

- 6 significant storm events that have impacted region
 - Shut down of County and Court's operations
 - Loss of use as well & costs to repair damage
 - County emergency response facilities and infrastructure compromised/incapacitated



2005 Event

*County of Solano – Sheriff's Building
Fairfield, California*



1. South hallway drywall removed.

*County of Solano – Hall of Justice Building
Fairfield, California*



4. Courtroom 103, wood base removed at Jury Wall.



2. Typical office drywall removal.



5. Overall view of hallway behind courtrooms.

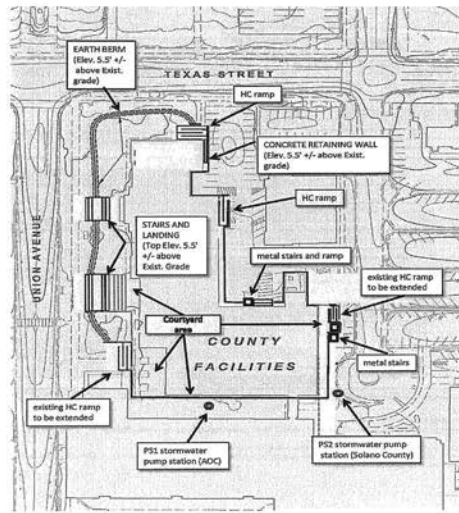
Study Summary

RECOMMENDATION SUMMARY - SOLANO COUNTY JUSTICE CAMPUS

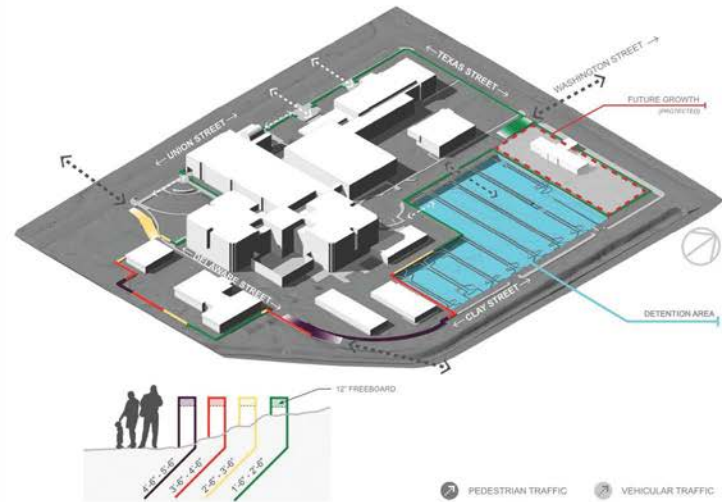
- WINZLER & KELLY - 2009**
LOCAL IMPROVEMENTS
- DETENTION PONDS
 - PUMP STATION UPGRADES
 - DRAINAGE UPGRADES
 - NET POSITIVE TO COMMUNITY



- JACOBS - 2011**
HOJ BUILDING ONLY
- 5'-6" WALLS
 - NEW STAIRS AND LANDINGS
 - NEW RAMPS
 - NET NEGATIVE TO NEIGHBORS



- LIONAKIS - 2014**
PROTECTION OF JUSTICE CAMPUS
- FLOOD WALLS
 - UNDERGROUND DETENTION
 - NEW PUMPS
 - NO NET EFFECT TO NEIGHBORS



Attachment 2

RELATIVE STUDY OPTION COST MODELS

Author	Year	Option	Description	Goal	Operations	Orig. Est.	2016 Dollars
W&K	2009	Alternative 1	New Detention Ponds and New Washington Street Pump Station	Eliminate Ponding	Improved	\$10.1 M*	\$12.2 M
		Alternative 2	New Detention Ponds and County Pump Station Upgrade	Eliminate Ponding	Improved	\$8.8 M*	\$10.7 M
		Alternative 3	Storm Drain Boxes Upgrade and New Washington Pump Station	Reduce Ponding	Improved	\$17.7 M*	\$21.5 M
		Alternative 4	Storm Drain Boxes Upgrade and County Pump Station Upgrade	Reduce Ponding	Improved	\$16.4 M*	\$19.9 M
Jacobs	2011	HOJ Wall	5.5' wall and berm around HOJ	Protect HOJ	Reduced	\$1.5 M	\$1.9 M
Lionakis	2014	15 year Wall	Wall of varying height + equal retention volume	Protect Campus	Improved	\$14.2 - 15.1 M	\$14.2 - 15.1 M
		25 Year Wall	Wall of varying height + equal retention volume	Protect Campus	Improved	\$17.6 - 19.1 M	\$17.6 - 19.1 M

Affected Jurisdictions/Agencies

- Judicial Council of California,
- City of Fairfield,
- City of Suisun City and
- Solano County
- Union Pacific Railway

Actions to date

- Initiated study and development of potential plan
- Focus group develop to review funding options
- Inter-agency responsibilities identified
- Short and long term options developed



Project Definition

- Phase 1 – Walls and Berms
 - \$4 - \$5 million estimated total project cost
 - Can begin design immediately
 - 18 -24 month total project delivery
 - Project focused on Fairfield Justice Campus
 - Stakeholders: Solano County, Judicial Council of California
 - Benefits to Solano County Residents using Judicial Campus Functions



JUDICIAL COUNCIL
OF CALIFORNIA

Walls & Berms



- PASSIVE BERM STRATEGY TO PROVIDE PROTECTION AND INTEGRATE INTO THE EXISTING CAMPUS LANDSCAPING

- PASSIVE CONCRETE WALL WITH INTEGRATED SEATING

- AUTOMATED FLOODBREAK GATE SYSTEM

CONCEPTUAL RENDERING OF HOJ ENTRANCE

Project Definition

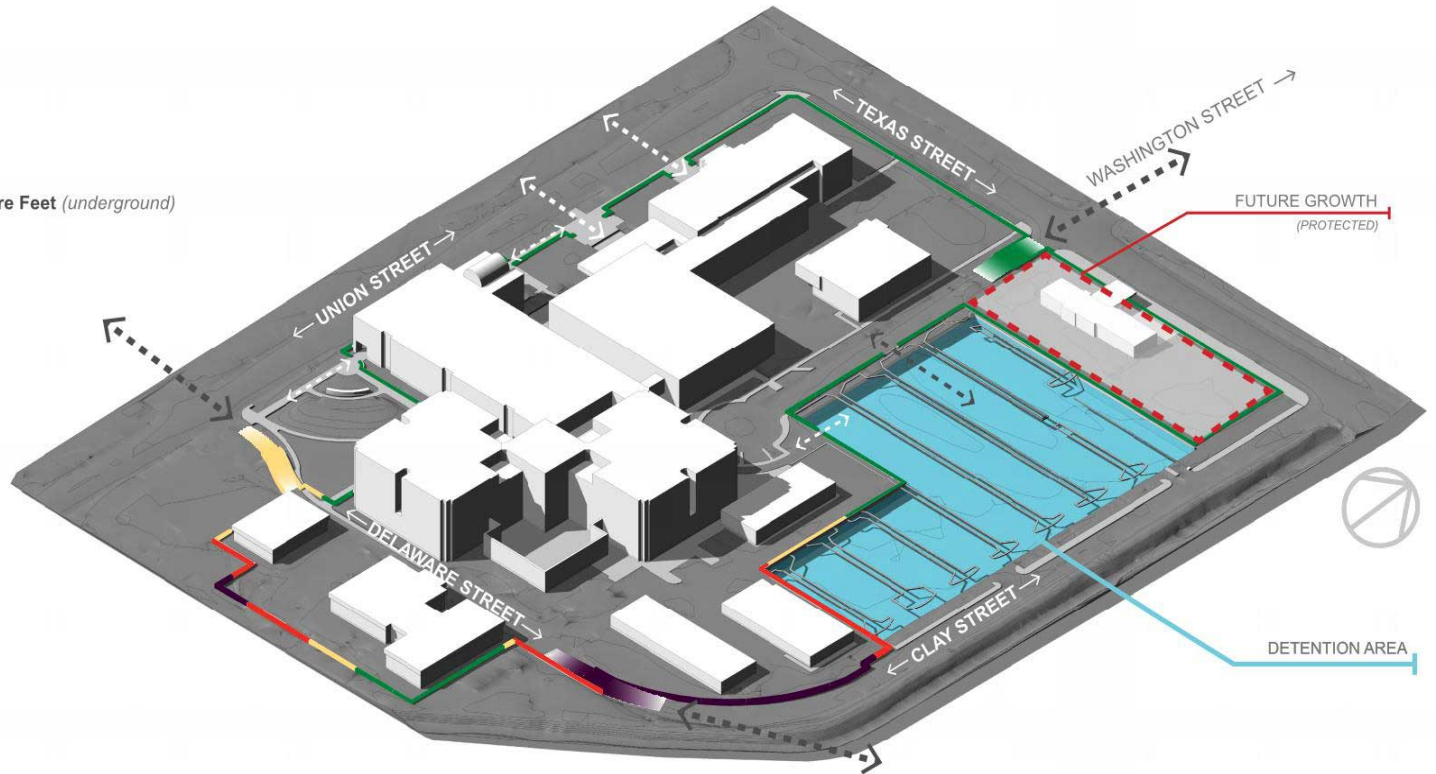
- Phase 2 – Onsite/Offsite Detention
 - Onsite – Detention facility to hold storm surge waters
 - \$9 - \$10 million estimated total project cost
 - Could begin entitlements immediately
 - 24 – 28 month total project delivery
 - Benefits to Solano County Residents using Judicial Campus Functions as well local property owners adjacent to site
 - Offsite – Park/Field Detention Basin
 - \$2 - \$2.5 million estimated total project cost
 - Creation of 15 acre-foot storm water storage basin that could function as recreational soccer fields
 - Would require cross jurisdictional support and environmental entitlements as well project study and design
 - 24 – 36 months



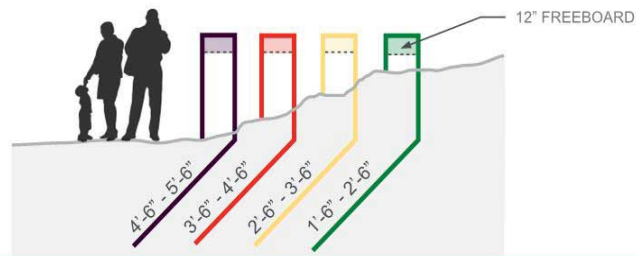
Onsite Detention

15 Year Protection:

Protection Area: **440,000 Square Feet**
 Detention Area: **100,000 Square Feet**
 Water Storage: **875,556 Cubic Feet / 20.1 Acre Feet** (underground)
 Max Depth: **11'-4"** (below water table)



INSTALLATION IMAGES



PEDESTRIAN TRAFFIC



VEHICULAR TRAFFIC

WALL HEIGHT & STORAGE CAPACITY STUDY - PRECAST VOLUME AND PROTECTION AREA

Actions Taken:

- Confirmed limited short term funding available
- Storm channels and culverts maintenance/cleanings completed by both City of Fairfield and City of Suisun City
- Requested Union Pacific to review/address maintenance
- Developing survey map of canal heights
- Develop monitoring strategy for new buoy sensors in San Pedro bay
- Finalizing scope for Phase 1 design targeting:
 - Court building
 - Central Plant



Next Steps (Phase I)

- July 2015 - Negotiate design and construction document scope
- August 2015 - Board of Supervisors to approve design task order
- September 2015 - Judicial Council executes task order
- Lionakis schedule as follows
 - September /October 2015 - Due diligence & CEQA
 - November 2015/February 2016 - Design
 - March/May 2016 - Construction drawing and permitting
- June 2016 – County BoS & JCC funding discussion/approval
- June/July 2016 - County managed bid and contract award
- August 2016 - Construction commences



Questions & Answers



JUDICIAL COUNCIL
OF CALIFORNIA

Action Item 6

Five Year Infrastructure Plan – Deferred Maintenance Request Log

- DOF first required Deferred Maintenance Report in FY 14-15
- To be included in COBCP process
- Building Name, ROM, Prioritization
- Current List – 2,856
- Total Value – \$2,122,563,000
- JCC Share of Cost – \$1,658,515,000



Action Item 6

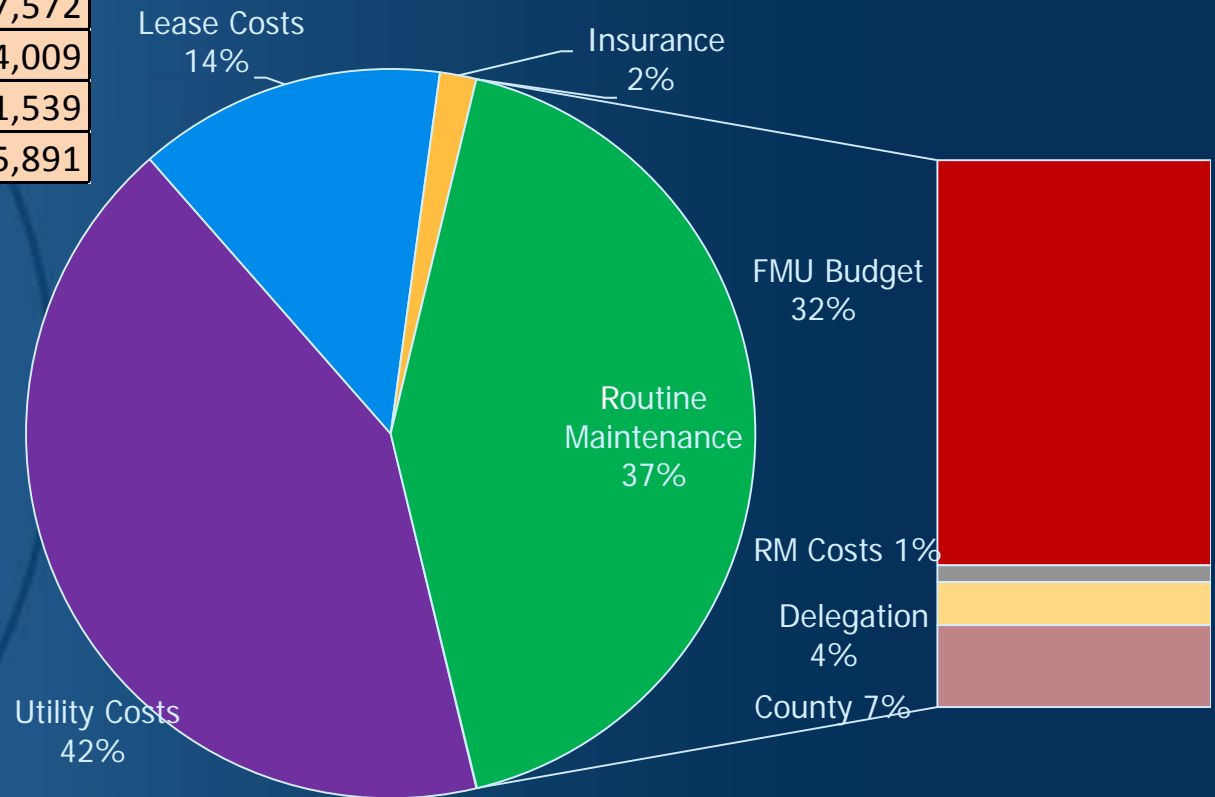
Five Year Infrastructure Plan – Deferred Maintenance Request Log

- Prioritization Methodology
 - Removed vacant & buildings scheduled for surplus
 - System Hierarchy – TCFMAC, TCPJAC, CEAC
 - Facility Condition Index
- Approval Process
 - TCFMAC – Deferred List
 - CFAC – Approved COBCP Document
 - Judicial Council – BCP Process



Action Item 7 – FY 15-16 O&M Spending Plan Per Gov. Budget

Program Need	\$117,617
Utilities	\$50,428
Leases	\$16,240
Insurance	\$1,938
Routine Maintenance	\$49,011
Routine Maintenance Allocation	
County	\$7,572
Delegation	\$4,009
Ancillary RM Costs	\$1,539
FMU Budget	\$35,891



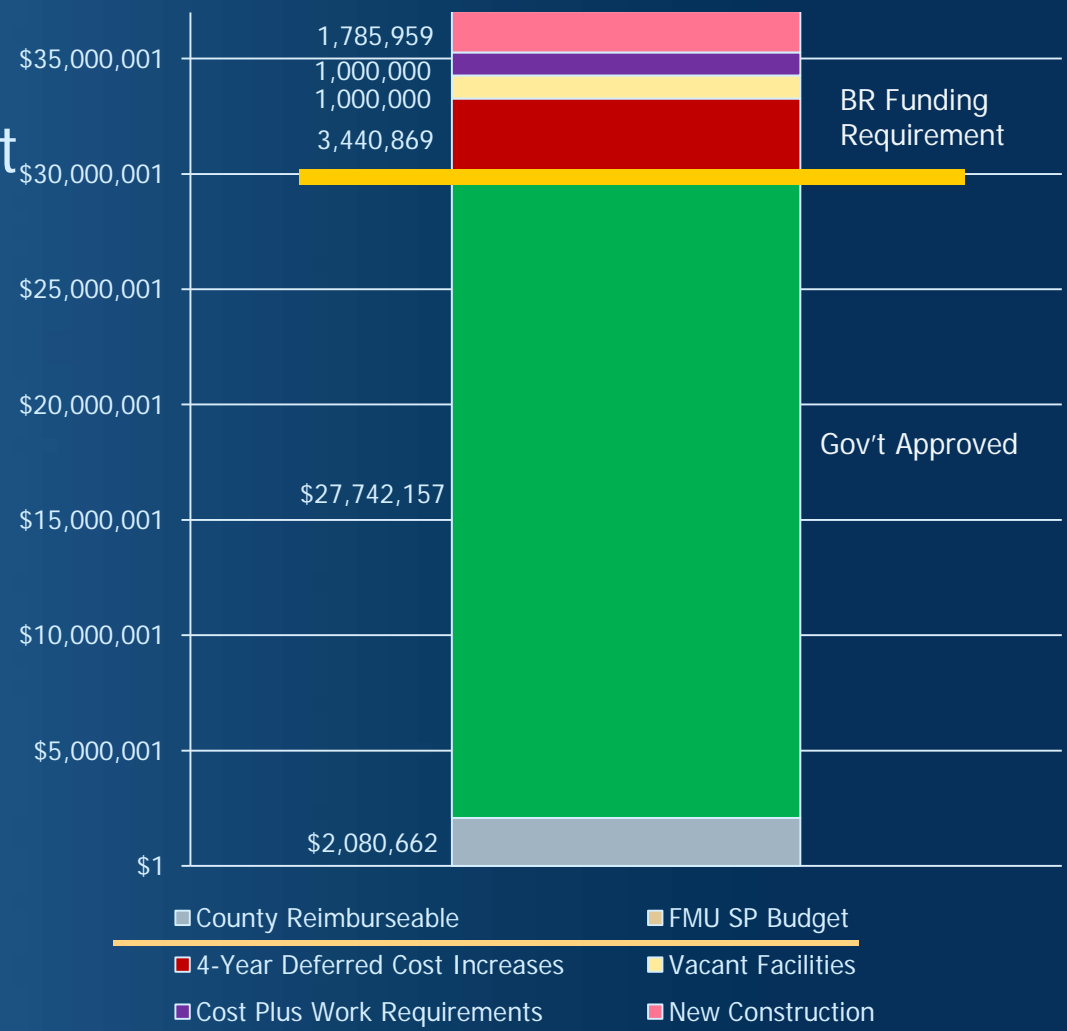
Action Item 7 – FY 15-16 O&M Spending Plan Per Gov. Budget

Table 2	
Court Facilities Trust Fund	
FY 2015-16 Appropriation Reconciliation	
Current Appropriation	121,498,000
Current Appropriation (Reimb)	(7,000,000)
Total	114,498,000
Needed Appropriation	127,620,000
Needed Appropriation (Reimb)	(10,000,000)
Total Need	117,620,000
Difference = Budget Revision (BR)	
Additional Appropriation	6,122,000
Additional Appropriation (Reimb)	(3,000,000)
Total	3,122,000

- Need DOF approved BR of \$3.1M
- Budget Team to submit to DOF
- Timeline –
 - Post BCP process
 - Dec/Jan timeframe

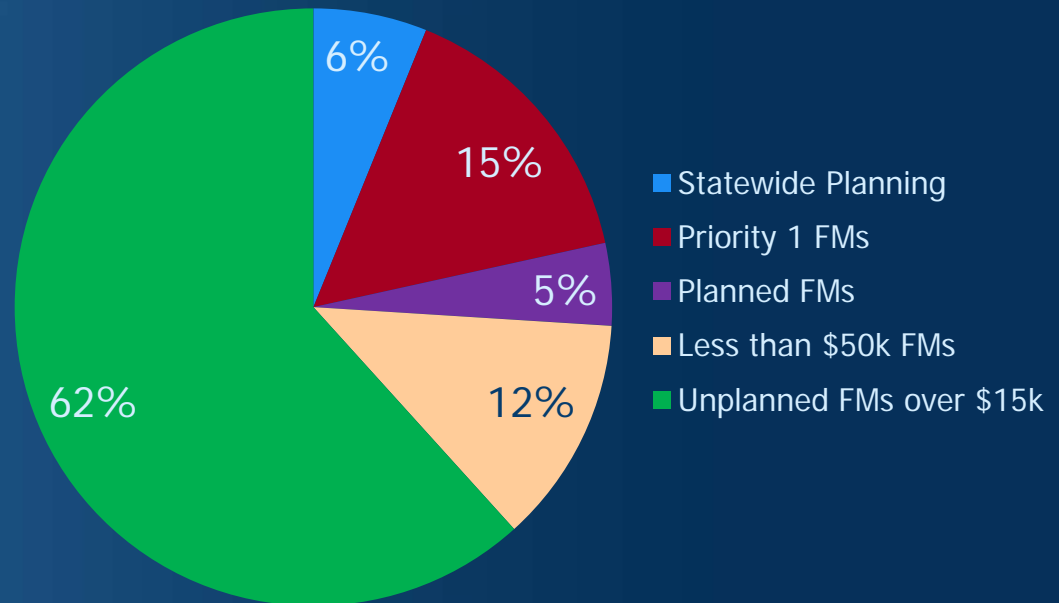
FY 15-16 O&M Spending Plan Per Gov. Budget

- Change Factors
 - Capital Construction
 - Economic Adjustment
 - 3% Inflation Factors
- Scope Change
 - PM Cut Back
 - Vacant Bldgs



FY 15-16 FM Spending Plan

FY 15-16 Projected FM Budget (\$1,000s)	
Statewide Planning	\$4,000
Priority 1 FMs	\$10,000
Planned FMs	\$2,900
Less than \$50k FMs	\$8,000
Unplanned FMs over \$15k	\$40,100
Total	\$65,000



JUDICIAL COUNCIL
OF CALIFORNIA

FY 15-16 FM Spending Plan

FM Budget Category		FM Budget Plan	Historical FFP Allocation	Total Remaining FM Budget
Statewide Planning		\$4,000,000	\$2,106,909	\$1,893,091
		6%		
Priority 1 FMs		\$10,000,000	\$1,072,395	\$8,927,605
		15%		
Planned FMs		\$2,880,000	\$0	\$2,880,000
		4%		
Priority 2-6 FMs	Less than \$50k FMs	\$8,000,000	\$3,016,055	\$4,983,945
		12%		
	FMs over \$50k	\$40,120,000	\$2,823,943	\$37,296,057
		62%		
FM Budget Impact		\$65,000,000	\$9,019,302	\$55,980,698
			13.88%	



Recommended Planned Projects

FM-0017040	Los Angeles	Compton Courthouse	2	Fire - Phase II - Building alarm system is not code compliant and must be renovated to comply with State Fire Marshal notice to comply.	\$1,834,800	\$1,213,353	66.13%
FM-0028322	Orange	Central Justice Center	2	Fire - Phase II - Building alarm system is not code compliant and must be renovated to comply with State Fire Marshal notice to comply.	\$1,827,947	\$1,666,539	91.17%

Approved but Unfunded

FMs On Hold Until FY 15-16	Number of Projects	Anticipated Funding
Mendocino	2	\$560,000
Total	2	\$560,000

Energy Conservation Projects

October	\$1,000,000
January	\$1,000,000
FY 15-16 Total	\$2,000,000



FY 14-15 FM Spending Plan Detail by Month

FY 2015-2016 Spending Plan (\$1,000s)	
Month/Item	Spending
JUL 2015	\$32,430
AUG 2015	\$3,000
OCT 2015	\$7,000
DEC 2015	\$3,000
JAN 2016	\$7,010
MAR 2016	\$4,000
APR 2016	\$3,000
MAY 2016	\$3,000
Energy Efficiency – OCT 2015	\$1,000
Energy Efficiency – JAN 2016	\$1,000
Approved Projects Pending County Funds	\$560
TOTAL	\$65,000

Statewide Planning	\$4,000
Priority 1 FMs	\$10,000
Planned FMs	\$2,900
FM Less Than \$50k	\$8,000
FM Greater Than \$50k	\$7,530
Total	\$32,430



JUDICIAL COUNCIL
OF CALIFORNIA

Note: Numbers rounded to simplify math functions

Action Item 7

FY 2015-2016 Budget Plans

- Comment and Input
- Recommendation:

Approve proposed FY 2015-2016 budget plans.



Action Item 8

TCFMAC Q4 Report

- Comment and Input
- Note new project highlights
- Recommendation:

Approve for release to E&P based on adjustments from committee input



Action Item 9

Policy on Art Acquisition for Court Facilities

- Purpose & Scope
 - Section 1
- Art Acquisition
 - Section 4.3-4.4 & Section 4.1
- Approval of Art
 - Section 5



Action Item 9

Policy on Art Acquisition for Court Facilities

- Reviewing Committees:
 - TCPJAC/CEAC Joint Court Facilities Advisory Committee – 7-1-15
 - CFAC – 7-16-15
 - FPWG – 7-21-15
- Targeted for Council Meeting – July 28
- Recommendation:
Approve for release to Judicial Council



JUDICIAL COUNCIL
OF CALIFORNIA

Action Item 10

Budget Change Proposals for FY 2016-2017

- Five BCPs
 1. Review of O&M, FM & New Construction
 2. Trial Court Security System Maintenance, Replacement and Improvements
 3. Risk Management Program
 4. Los Angeles Superior Court – Antelope Valley FMs
 5. Green Pilot Projects
- Need to rank recommendations



Action Item 10-1 (BCP)

O&M, FM, New Construction

Support Function	Funding	Additional Funding Requested	Percentage of Growth	Additional FTE Required
Routine Maintenance	\$37.2M	\$27.6M	71%	4 (GF Funded)
New Facilities		\$12.4M		
Facility Modifications	\$65M	\$12M	18%	4 (GF Funded)

- Brings O&M to BOMA standard
- Brings FM to 2% Capital Reinvestment



Action Item 10-2 (BCP) Trial Court Security System Maintenance, Replacement and Improvements

- Existing Systems
- Annual Repair & Maintenance Costs
- Annual Cost for System Replacement
- Security Grant Program
- Current Recommendations



Action Item 10-2 (BCP) Trial Court Security

- Existing systems need replacement and repairs and maintenance
- Systems in new courthouses must be maintained and repaired
- Restore Trial Court Security Grant Program funding
- Add staff necessary to support these efforts

Action Item 10-2 (BCP) Trial Court Security - Existing Systems

	Cameras	Duress	Access	Intrusion
OS	80	116	27	0
REFM	15	15	25	33
Court	52	55	69	37
Total	147	186	121	70



Action Item 10-2 (BCP) Trial Court Security – Annual Repair & Maintenance Costs

• Camera Systems	\$ 497,720
• Access Systems	\$ 252,000
• Duress Systems	\$ 50,000
• Intrusion Alarms	\$ 31,351
Total	\$ 831,071



Action Item 10-2 (BCP) Trial Court Security – Annual Cost for System Replacement

• Cameras	\$ 694,988
• Access	\$ 175,528
• Duress	\$ 152,482
Total	\$1,022,998



Action Item 10-2 (BCP) Trial Court Security – Total Annual Replacement & Repair Costs

• Cameras	\$1,192,708
• Access	\$ 427,528
• Duress	\$ 202,482
• Intrusion	\$ 31,351
• Total	\$ 1,854,069



Action Item 10-2 (BCP) Trial Court Security – Trial Court Security Grant Program

- \$1.2 million in IMF
- Funding was eliminated as of FY 15/16
- Necessary to address system deficiencies (locations with no system)



Action Item 10-2 (BCP) Trial Court Security – Estimated Budget Change Proposal Request

• Replace & Repair	\$1,854,069
• TCSGP funding	\$1,200,000
• Additional staff (3)	\$ 390,000
• Total BCP Request	\$3,444,069



Action Item 10-3 (BCP) Trial Court Facilities – Risk Management Program

- Past Actions
- Recommendation
- Alternative Solutions
- Next Steps



Action Item 10-3 (BCP) Trial Court Facilities – Risk Management Program: Past Actions

Support Function	Funding	Additional Funding Requested	Percentage of Growth	Fund Source
Risk Management Program	\$1 M	\$1.655 M	65%	General Fund

- Judicial Council approved submittal of FY 2015-16 BCP
- BCP declined by DOF



Action Item 10-3 (BCP) Trial Court Facilities – Risk Management Program

- Recommendation:
 - Submit concept to Judicial Council for General Fund Augmentation of \$3,931,040 to purchase facilities related insurance for effective risk management.



Action Item 10-3 (BCP)

Trial Court Facilities – Risk Management Program

Alternative	Funding Requested	% of Growth	Fund Source
1	\$2.737M	273.7%	General Fund
2	\$1.343M	34.3%	General Fund
3	\$0	0%	General Fund

- Alternative 1 – Insure court buildings with title transfer or where JCC has risk of loss, FULLY allocate funds for excess liability insurance and payment of self-insured claims and lawsuit costs
- Alternative 2 – Insure all buildings where there is a contract or bond financing requirement, FULLY allocate funds for self-insured claims and lawsuit costs
- Alternative 3 – Status quo-Insure all buildings where there is a contract or bond financing requirement, PARTIALLY allocate funds for self insured claims and lawsuit costs.



Action Item 10-3 (BCP) Trial Court Facilities – Risk Management Program: Next Steps

- Step 1 – Executive and Planning Committee
- Step 2 – Judicial Council review and approval
- Step 3 – Submittal of BCP to DOF



Action Item 10-3 (BCP) Trial Court Facilities – Risk Management Program

- Comment and Input
- Recommendation:
Approve development and submittal of
BCP concepts to Judicial Council



Action Item 10-4 (BCP) Antelope Valley Juvenile Court Facility Modifications

- Past Actions
- Recommendation
- Alternative Solutions
- Next Steps



Action Item 10-4 (BCP)

Antelope Valley Juvenile Court Facility Modifications

Support Function	Funding	Additional Funding Requested	Percentage of Growth	Fund Source
Antelope Valley Juvenile Court Facility Modifications	\$0 M	\$3.5 M (one time)	100%	Immediate and Critical Needs Acct

- The project ranked in the Immediate Need Priority group of the Trial Court Capital-Outlay Plan.
- January 2010 submitted as an SB 1407 (ICNA) Capital Outlay project to DOF – denied and recommended to submit as an FM.
- October 2012 – JC approved referral of project to TCFMAC for consideration as an FM.



Action Item 10-4 (BCP) Antelope Valley Juvenile Court Facility Modifications

- Recommendation:
 - Submit concept to Judicial Council for ICNA Augmentation of \$3.5 to build out 2 shelled courtrooms and associated support spaces in the Michael D. Antonovich Courthouse and to perform minor modifications in the McCourtney Juvenile Justice Center Courthouse.



Action Item 10-4 (BCP) Antelope Valley Juvenile Court Facility Modifications

Alternative	Funding Requested	% of Growth	Fund Source
1	\$3.5M	100%	ICNA
2	\$0M	0%	ICNA

- Alternative 1 – Renovate the existing McCourtney Juvenile Justice Center Courthouse.
- Alternative 2 – Status Quo, no new funding



Action Item 10-4 (BCP) Antelope Valley Juvenile Court Facility Modifications: Next Steps

- Step 1–Executive and Planning Committee
- Step 2–Judicial Council review and approval
- Step 3-Submittal of BCP to DOF



Action Item 10-4 (BCP) Antelope Valley Juvenile Court Facility Modifications

- Comment and Input

- Recommendation:

Approve development and submittal of BCP concept to Judicial Council.



Action Item 10-5 (BCP) Green Pilot Projects

- Focus on six, reasonably sized facilities
- Leverage outside resources offered by the utility companies
- Allow for a more holistic approach to conservation efforts
- Enable more aggressive energy efficiency and water conservation options
- Ensure a collaborative approach
- Highlight the Judicial Branch's leadership role in energy and water conservation efforts

Action Item 10 (BCP)

- Comment and Input
- Recommendation:

Approve development and submittal of BCP concepts to Judicial Council



JUDICIAL COUNCIL
OF CALIFORNIA

Action Item 10 (BCP)

- August
 - Concepts E&P Committee
 - Concepts to Council
- September
 - E&P Approval
 - A&E Committee for BCP w/Staff
 - Council approval



Discussion Item 3

Earthquake Peril and California Court Buildings

- Jim Mullen, Senior Manager, Risk Management Program



JUDICIAL COUNCIL
OF CALIFORNIA

Earthquake Peril and California Court Buildings

- California is the most seismically active state in the nation
- It has experienced some of the most destructive earthquakes in modern history
- In 1994, it experienced what was at the time the most costly natural disaster ever to strike in the United States—the Northridge Earthquake
- It is a certainty that more (some even larger) earthquakes will occur in California.
- New USGS Earthquake Study - Californians should expect a magnitude-6.7 quake to occur every 6.3 years somewhere in the state



Seismic safety ratings by Division of State Architect

- This series of definitions was developed by the California State University, the University of California, the California Department of General Services, and the Administrative Office of the Courts from 1995 through 2009
- The seismic requirements for design and assessment are based upon a prescribed Earthquake Hazard Level/Basic Safety Earthquake Levels = BSE-1, BSE-2, BSE-R or BSE-C
 - Structural engineering firm of Rutherford & Chekene applied the criteria to court buildings
 - Level IV - A building evaluated as meeting or exceeding the requirements of CBC Chapter 34 for Occupancy Category I-III performance criteria.
 - Level V - A building evaluated as meeting or exceeding the requirements of CBC Chapter 34 for Occupancy Category I-III performance criteria only if the BSE-R and BSE-C values are reduced to 2/3 of those specified for the site
 - Rutherford & Chekene continues to be engaged by the Judicial Council as its primary seismic consultant



Court Buildings

- 307 "owned" buildings
- Total SQ FT = 24,833,313
- Court Occupied SQ FT = 13,781,037
- Number with Seismic Safety Rating of V = 106
- SQ FT Seismic Safety Rating of LEVEL V = 11,832,837 (48% of Total SQ FT)



Seismic Level V

- Number with Seismic Safety Rating of V = 106 (35% of Court Buildings)
- SQ FT Seismic Safety Rating of V = 11,942,027 (48% of Total SQ FT)
- Number of Seismic Level V rated buildings for which the county retains responsibility of seismic related property damage and personal injury loss = 102
- Number of Seismic Level V rated buildings for which the JCC retains responsibility of seismic related property damage and personal injury loss = 4 (San Diego)



RISK OF LOSS

- Modeling assumption = No single loss would exceed \$50,000,000
 - the annual expected loss to all level V buildings was \$17,700,000 at a 75% confidence level
 - \$20,285,000 at a 90% confidence level
- There was a 1% chance of an annual expected loss of up to \$71,000,000
- There was a 0.1% chance of an annual expected loss of up to \$167,000,000
- An expected loss was developed for each level V court building



The 6 most exposed counties are:

- Los Angeles – 20.5% of total expected loss
- Orange – 10.4% of total expected loss
- San Bernardino – 7.62% total of expected loss
- Alameda – 7.16% of total expected loss
- San Francisco – 5.86% of total expected loss
- Ventura – 5.79% of total expected loss



At the time of the study the 5 most exposed buildings were:

- Los Angeles - Stanley Mosk Courthouse / JCC Title / Uninsured
- Los Angeles - Compton Courthouse / JCC Title / Uninsured
- Orange - Lamoreaux Justice Center / County Title / Insured
- San Bernardino - San Bernardino Courthouse Annex / County Title / Insured
- San Francisco - Hall of Justice / County Title / Uninsured



Risk Financing

- 102 Level V buildings - county financial obligation
- 4 Level V buildings – JCC financial obligation
- 40 Level IV or better buildings insured for earthquake damage
- 107 buildings insured for fire following, and sprinkler leakage following an earthquake
- Stafford Act (FEMA and California Office of Emergency Management)
 - ✓ JCC and courts can claim for cost of restoration following an earthquake for up to 75% of damage cost



Judicial Council Financial Exposure

- While third party funds may be available to make repairs in the event of an earthquake there is still substantial financial exposure to the JCC.
- For level V buildings:
 - ✓ The counties should not be considered an immediate source of funds
 - ✓ Emergency response costs must be initially absorbed by the Judicial Council with potential recovery from one of more third parties: county, insurer, FEMA
 - ✓ Both insurance and FEMA provide funds to reimburse JCC expenditures
 - ✓ Both insurance and FEMA are subject to large deductibles: a) insurance = 5% of the damaged building's replacement cost, b) FEMA = 25% of the claimed dollars



For other than level V buildings

- For other than level V buildings
 - ✓ The counties may be a source of funds depending on occupancy shares
 - ✓ Emergency response costs will be absorbed by the JCC with potential recovery for one of more third parties: county, insurer, FEMA
 - ✓ Both insurance and FEMA provide funds to reimburse expenditures made
 - ✓ Both insurance and FEMA are subject to large deductibles: a) insurance = 5% of the damages building's replacement cost, b) FEMA = 25% of the claimed dollars



Possible Path Forward

- Update the expected seismic loss studies completed in 2009 to provide current estimates of expected loss by building, by county, and for the court building portfolio as a whole
- Seek special appropriated funds to correct deficiencies in non-structural components that are not anchored or braced in court buildings such as mechanical, electrical and architectural elements, which can pose significant life-safety risks



Possible Path Forward

- Explore options for funding the seismic upgrading of the court buildings identified as Level V
- As building standards have improved, the risks to occupants posed by the contents of buildings, including furniture and equipment, have become more significant. Regulate and enforce securing the anchoring and bracing of court owned contents
- Establish a special, non-lapsing fund, in which to allocate funds to pay for emergency response costs, and other short-term costs necessary to maintain the basic health and safety systems of a damaged building while long-term restoration funds are obtained



Possible Path Forward

- Explore options for funding the seismic upgrading of the court buildings identified as Level V
- As building standards have improved, the risks to occupants posed by the contents of buildings, including furniture and equipment, have become more significant. Regulate and enforce securing the anchoring and bracing of court owned contents
- Establish a special, non-lapsing fund, in which to allocate funds to pay for emergency response costs, and other short-term costs necessary to maintain the basic health and safety systems of a damaged building while long-term restoration funds are obtained



FY 15-16 First Steps

- Dedicate Statewide Planning to fund a limited seismic study. (Potential \$250k)
- Seismic Study geared towards these deliverables:
 1. Develop a building cost estimate for taking the V to IV.
 2. Comparison of potential risk of damage to cost of renovation.
 3. A prioritized list based on risk and cost that has been developed.
- Review potential BCP concepts for FY 16-17 cycle



Discussion Item 4

Santa Barbara Area Court Improvement Status Update

- Project assigned to Peggy Symons
- DOF concurs keeping Jury Assembly makes sense
- Disposition process for trailer engaged
- Real Estate approaching county to determine interest.



Discussion Item 5

Prioritization Methodology

Status Update

- Goal – Align Methodology with FM Policy
- Review in progress w/ REFM & Legal
- Structure may change
- Bright lines identified
- Grey areas under review and discussion
- Potential Committee Review – 9-15



2015 TCFMAC Meeting Calendar

Date	Day of Week	Type of Meeting
January 16, 2015	Friday	In Person
March 6, 2015	Friday	Phone
March 30, 2015	Monday	Phone (Out of Cycle)
April 13, 2015	Monday	In Person
May 21-22, 2015	Thursday-Friday	In Person (Los Angeles)
July 17, 2015	Friday	In Person
August 31, 2015	Monday	Phone
October 23, 2015	Friday	In Person
December 7, 2015	Monday	Phone



Adjourn Meeting

- Closing Discussions
- Chair Closing Comments



JUDICIAL COUNCIL
OF CALIFORNIA