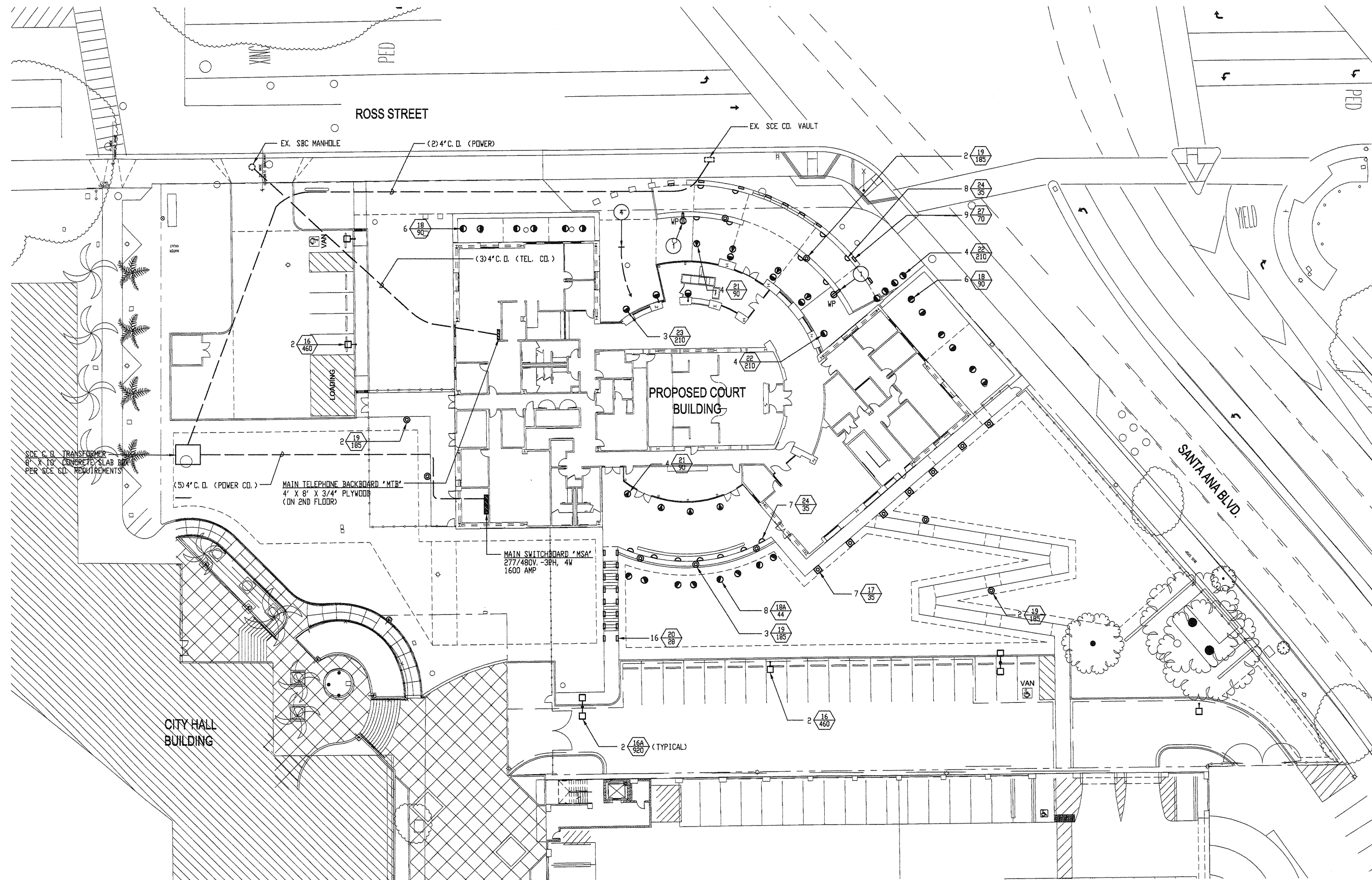
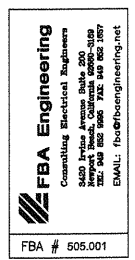


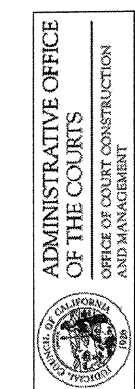
ALL IDEAS, DESIGN ARRANGEMENTS AND PLANS INDICATED OR REPRESENTED BY THIS DRAWING ARE OWNED BY, AND THE PROPERTY OF CARRIERJOHNSON, AND WERE CREATED, EVALUATED AND DEVELOPED FOR USE ON, AND IN CONNECTION WITH THIS PROJECT. NONE OF SUCH IDEAS, DESIGN ARRANGEMENTS, OR PLANS SHALL BE USED BY, OR DISCLOSED TO ANY PERSON, FIRM, OR CORPORATION FOR ANY PURPOSE WHATSOEVER WITHOUT THE WRITTEN PERMISSION OF CARRIERJOHNSON. FILING THESE DRAWINGS OR SPECIFICATIONS WITH ANY PUBLIC AGENCY IS NOT A PUBLICATION OF SAME. NO COPYING, REPRODUCTION OR USE THEREOF IS PERMISSIBLE WITHOUT THE CONSENT OF CARRIERJOHNSON.



- PLAN NOTES:
- 1 MOUNT ON BACK SIDE OF CONCRETE BENCH.
  - 2 CONNECT TO MOTORIZED GATE OPERATOR.
  - 3 FOR GATE CONTROLS. ROUTE 3/4\" C. D. TO TELCOM ROOM 119.
  - 4 STUB CONDUIT INTO PEDESTAL FOR INTERCOM. ROUTE 3/4\" C. D. TO TELCOM ROOM 119.
  - 5 STUB CONDUIT INTO PEDESTAL FOR CAMERA. ROUTE 3/4\" C. D. TO TELCOM ROOM 119.
  - 6 3/4\" C. D. TO PANEL P1A. STUB OUT AND CAP CONDUIT FOR FUTURE LIGHTING OF SCULPTURE.



COURT OF APPEAL  
 FOURTH APPELLATE DISTRICT  
 DIVISION THREE  
 SANTA ANA, CA



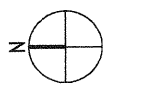
02-08-07 60% CD SUBMITTAL  
 ISSUES:

PROJECT NO:  
 FILENAME:  
 E1.0\_505001  
 DRAWN BY: CHECKED BY:  
 PLOT DATE:  
 2-08-07  
 TITLE:

SITE ELECTRICAL  
 PLAN

DRAWING NO:

E1.0



SCALE  
 1" = 20' - 0"

SITE ELECTRICAL PLAN

ALL LEGAL DESIGN ARRANGEMENTS AND PLANS INDICATED OR REPRESENTED BY THIS DRAWING ARE OWNED BY AND THE PROPERTY OF CARRIER JOHNSON AND WERE CREATED, EVOLVED AND DEVELOPED FOR USE ON AND IN CONNECTION WITH THIS PROJECT. NONE OF SUCH DESIGN ARRANGEMENTS OR PLANS SHALL BE USED BY OR DISCLOSED TO ANY PERSON, FIRM, OR CORPORATION FOR ANY PURPOSE WHATSOEVER WITHOUT THE WRITTEN PERMISSION OF CARRIER JOHNSON. FILING THESE DRAWINGS OR SPECIFICATIONS WITH ANY PUBLIC AGENCY IS NOT A PUBLICATION OF SAME. NO COPYING, REPRODUCTION OR USE THEREOF IS PERMISSIBLE WITHOUT THE CONSENT OF CARRIER JOHNSON.

| COURT OF APPEAL                               |             |        |             | PROJECT NO. 505.001                       |             |        |             |       |
|---|-------------|--------|-------------|---|-------------|--------|-------------|-------|
| VOLTS 120/208<br>PHASE 3PH, 4W<br>MTG SURFACE |             |        |             | PANELBOARD AV<br>LOCATION MAIN ELEC. ROOM |             |        |             |       |
| MAIN 40A-3P<br>BUS 100 AMP                    |             |        |             |   |             |        |             |       |
| ←   | LOAD (VA)   | →      | LOAD        | ←   | LOAD (VA)   | →      | LOAD        |       |
| CXT   | A B C       | BKR    | QUAN        | C TYPE                                    | BKR         | QUAN   | C TYPE      |       |
| OUTLET  | DESCRIPTION | OUTLET | DESCRIPTION | OUTLET                                    | DESCRIPTION | OUTLET | DESCRIPTION |       |
| 1   | 720         | 20/1   | 4           | CONV. RECEPT.                             | 2           | 720    | 20/1        | SPARE |
| 3   | 720         | 20/1   | 4           | CONV. RECEPT.                             | 4           | 720    | 20/1        | SPARE |
| 5   | 720         | 20/1   | 4           | CONV. RECEPT.                             | 6           | 720    | 20/1        | SPARE |
| 7   | 720         | 20/1   | 4           | CONV. RECEPT.                             | 8           | 720    | 20/1        | SPARE |
| 9   | 720         | 20/1   | 4           | CONV. RECEPT.                             | 10          | 720    | 20/1        | SPARE |
| 11  | 720         | 20/1   | 4           | CONV. RECEPT.                             | 12          | 720    | 20/1        | SPARE |
| 13  | 720         | 20/1   | 4           | CONV. RECEPT.                             | 14          | 720    | 20/1        | SPARE |
| 15  | 720         | 20/1   | 4           | CONV. RECEPT.                             | 16          | 720    | 20/1        | SPARE |
| 17  | 720         | 20/1   | 4           | CONV. RECEPT.                             | 18          | 720    | 20/1        | SPARE |
| 19  | 720         | 20/1   | 4           | CONV. RECEPT.                             | 20          | 720    | 20/1        | SPARE |
| 21  | 720         | 20/1   | 4           | CONV. RECEPT.                             | 22          | 720    | 20/1        | SPARE |
| 23  | 720         | 20/1   | 4           | CONV. RECEPT.                             | 24          | 720    | 20/1        | SPARE |
| 25  | 720         | 20/1   | 4           | CONV. RECEPT.                             | 26          | 720    | 20/1        | SPARE |
| 27  | 720         | 20/1   | 4           | CONV. RECEPT.                             | 28          | 720    | 20/1        | SPARE |
| 29  | 720         | 20/1   | 4           | CONV. RECEPT.                             | 30          | 720    | 20/1        | SPARE |
| 31  | 720         | 20/1   | 4           | CONV. RECEPT.                             | 32          | 720    | 20/1        | SPARE |
| 33  | 720         | 20/1   | 4           | CONV. RECEPT.                             | 34          | 720    | 20/1        | SPARE |
| 35  | 720         | 20/1   | 4           | CONV. RECEPT.                             | 36          | 720    | 20/1        | SPARE |
| 37  | 720         | 20/1   | 4           | CONV. RECEPT.                             | 38          | 720    | 20/1        | SPARE |
| 39  | 720         | 20/1   | 4           | CONV. RECEPT.                             | 40          | 720    | 20/1        | SPARE |
| 41  | 720         | 20/1   | 4           | CONV. RECEPT.                             | 42          | 720    | 20/1        | SPARE |

|           |    |      |                            |   |                                       |
|-----------|----|------|----------------------------|---|---------------------------------------|
| CONNECTED | VA | AMPS | L.C.L. @ 125% =            | 0 | LOAD TYPE:                            |
| PHASE A = | 0  | 0    | RECEPT. ( ) 10 KVA @ 500 = | 0 | G - GENERAL (1000) N - MOTOR (1000)   |
| PHASE B = | 0  | 0    | KITCHEN @ 650 =            | 0 | L - L.C.L. (1250) M1 - MOTOR (1250)   |
| PHASE C = | 0  | 0    | OTHER LOAD @ 1000 =        | 0 | R - RECEPTACLE (500) X - X-RAY (1000) |
| TOTAL =   | 0  | 0    | TOTAL VA =                 | 0 | (10 KVA @ 1000) XI - X-RAY (500)      |
|           |    |      | TOTAL AMPS =               | 0 | K - KITCHEN (650)                     |

| COURT OF APPEAL                               |     |      |   | PROJECT NO. 505.001                        |    |      |       |                |
|---|-----|------|---|--|----|------|-------|----------------|
| VOLTS 120/208<br>PHASE 3PH, 4W<br>MTG SURFACE |     |      |   | PANELBOARD PIA<br>LOCATION MAIN ELEC. ROOM |    |      |       |                |
| MAIN 40A-3P<br>BUS 400 AMP                    |     |      |   |  |    |      |       |                |
| 1   | 720 | 20/1 | 4 | CONV. RECEPT.                              | 2  | 720  | 20/1  | SPARE          |
| 3   | 720 | 20/1 | 4 | CONV. RECEPT.                              | 4  | 720  | 20/1  | SPARE          |
| 5   | 720 | 20/1 | 4 | CONV. RECEPT.                              | 6  | 720  | 20/1  | SPARE          |
| 7   | 720 | 20/1 | 4 | CONV. RECEPT.                              | 8  | 720  | 20/1  | SPARE          |
| 9   | 720 | 20/1 | 4 | CONV. RECEPT.                              | 10 | 720  | 20/1  | SPARE          |
| 11  | 720 | 20/1 | 4 | CONV. RECEPT.                              | 12 | 720  | 20/1  | SPARE          |
| 13  | 720 | 20/1 | 4 | CONV. RECEPT.                              | 14 | 1000 | 20/1  | COPIER         |
| 15  | 720 | 20/1 | 4 | CONV. RECEPT.                              | 16 | 500  | 20/1  | FLOOR BOX REC. |
| 17  | 720 | 20/1 | 4 | CONV. RECEPT.                              | 18 | 500  | 20/1  | FLOOR BOX REC. |
| 19  | 720 | 20/1 | 4 | CONV. RECEPT.                              | 20 | 1000 | 20/1  | COPIER         |
| 21  | 720 | 20/1 | 4 | CONV. RECEPT.                              | 22 | 720  | 20/1  | SPARE          |
| 23  | 720 | 20/1 | 4 | CONV. RECEPT.                              | 24 | 720  | 20/1  | SPARE          |
| 25  | 720 | 20/1 | 4 | CONV. RECEPT.                              | 26 | 720  | 20/1  | SPARE          |
| 27  | 720 | 20/1 | 4 | CONV. RECEPT.                              | 28 | 720  | 20/1  | SPARE          |
| 29  | 720 | 20/1 | 4 | CONV. RECEPT.                              | 30 | 720  | 20/1  | SPARE          |
| 31  | 720 | 20/1 | 4 | CONV. RECEPT.                              | 32 | 720  | 20/1  | SPARE          |
| 33  | 720 | 20/1 | 4 | CONV. RECEPT.                              | 34 | 720  | 20/1  | SPARE          |
| 35  | 720 | 20/1 | 4 | CONV. RECEPT.                              | 36 | 720  | 20/1  | SPARE          |
| 37  | 720 | 20/1 | 4 | CONV. RECEPT.                              | 38 | 6400 | 150/3 | PANEL PIB      |
| 39  | 720 | 20/1 | 4 | CONV. RECEPT.                              | 40 | 5400 | 150/3 | (SUBFEED)      |
| 41  | 720 | 20/1 | 4 | CONV. RECEPT.                              | 42 | 5400 | 150/3 | (SUBFEED)      |

|           |       |      |                            |       |                                       |
|-----------|-------|------|----------------------------|-------|---------------------------------------|
| CONNECTED | VA    | AMPS | L.C.L. @ 125% =            | 0     | LOAD TYPE:                            |
| PHASE A = | 19200 | 100  | RECEPT. ( ) 10 KVA @ 500 = | 11720 | G - GENERAL (1000) N - MOTOR (1000)   |
| PHASE B = | 19200 | 79   | KITCHEN @ 650 =            | 0     | L - L.C.L. (1250) M1 - MOTOR (1250)   |
| PHASE C = | 19200 | 79   | OTHER LOAD @ 1000 =        | 17880 | R - RECEPTACLE (500) X - X-RAY (1000) |
| TOTAL =   | 30000 | 85   | TOTAL VA =                 | 29880 | (10 KVA @ 1000) XI - X-RAY (500)      |
|           |       |      | TOTAL AMPS =               | 80    | K - KITCHEN (650)                     |

| COURT OF APPEAL                               |     |      |   | PROJECT NO. 505.001                       |    |     |      |       |
|---|-----|------|---|---|----|-----|------|-------|
| VOLTS 277/480<br>PHASE 3PH, 4W<br>MTG SURFACE |     |      |   | PANELBOARD LI<br>LOCATION MAIN ELEC. ROOM |    |     |      |       |
| MAIN L.D.<br>BUS 100 AMP                      |     |      |   |   |    |     |      |       |
| 1   | 720 | 20/1 | 4 | CONV. RECEPT.                             | 2  | 720 | 20/1 | SPARE |
| 3   | 720 | 20/1 | 4 | CONV. RECEPT.                             | 4  | 720 | 20/1 | SPARE |
| 5   | 720 | 20/1 | 4 | CONV. RECEPT.                             | 6  | 720 | 20/1 | SPARE |
| 7   | 720 | 20/1 | 4 | CONV. RECEPT.                             | 8  | 720 | 20/1 | SPARE |
| 9   | 720 | 20/1 | 4 | CONV. RECEPT.                             | 10 | 720 | 20/1 | SPARE |
| 11  | 720 | 20/1 | 4 | CONV. RECEPT.                             | 12 | 720 | 20/1 | SPARE |
| 13  | 720 | 20/1 | 4 | CONV. RECEPT.                             | 14 | 720 | 20/1 | SPARE |
| 15  | 720 | 20/1 | 4 | CONV. RECEPT.                             | 16 | 720 | 20/1 | SPARE |
| 17  | 720 | 20/1 | 4 | CONV. RECEPT.                             | 18 | 720 | 20/1 | SPARE |
| 19  | 720 | 20/1 | 4 | CONV. RECEPT.                             | 20 | 720 | 20/1 | SPARE |
| 21  | 720 | 20/1 | 4 | CONV. RECEPT.                             | 22 | 720 | 20/1 | SPARE |
| 23  | 720 | 20/1 | 4 | CONV. RECEPT.                             | 24 | 720 | 20/1 | SPARE |
| 25  | 720 | 20/1 | 4 | CONV. RECEPT.                             | 26 | 720 | 20/1 | SPARE |
| 27  | 720 | 20/1 | 4 | CONV. RECEPT.                             | 28 | 720 | 20/1 | SPARE |
| 29  | 720 | 20/1 | 4 | CONV. RECEPT.                             | 30 | 720 | 20/1 | SPARE |
| 31  | 720 | 20/1 | 4 | CONV. RECEPT.                             | 32 | 720 | 20/1 | SPARE |
| 33  | 720 | 20/1 | 4 | CONV. RECEPT.                             | 34 | 720 | 20/1 | SPARE |
| 35  | 720 | 20/1 | 4 | CONV. RECEPT.                             | 36 | 720 | 20/1 | SPARE |
| 37  | 720 | 20/1 | 4 | CONV. RECEPT.                             | 38 | 720 | 20/1 | SPARE |
| 39  | 720 | 20/1 | 4 | CONV. RECEPT.                             | 40 | 720 | 20/1 | SPARE |
| 41  | 720 | 20/1 | 4 | CONV. RECEPT.                             | 42 | 720 | 20/1 | SPARE |

|           |    |      |                            |   |                                       |
|-----------|----|------|----------------------------|---|---------------------------------------|
| CONNECTED | VA | AMPS | L.C.L. @ 125% =            | 0 | LOAD TYPE:                            |
| PHASE A = | 0  | 0    | RECEPT. ( ) 10 KVA @ 500 = | 0 | G - GENERAL (1000) N - MOTOR (1000)   |
| PHASE B = | 0  | 0    | KITCHEN @ 650 =            | 0 | L - L.C.L. (1250) M1 - MOTOR (1250)   |
| PHASE C = | 0  | 0    | OTHER LOAD @ 1000 =        | 0 | R - RECEPTACLE (500) X - X-RAY (1000) |
| TOTAL =   | 0  | 0    | TOTAL VA =                 | 0 | (10 KVA @ 1000) XI - X-RAY (500)      |
|           |    |      | TOTAL AMPS =               | 0 | K - KITCHEN (650)                     |

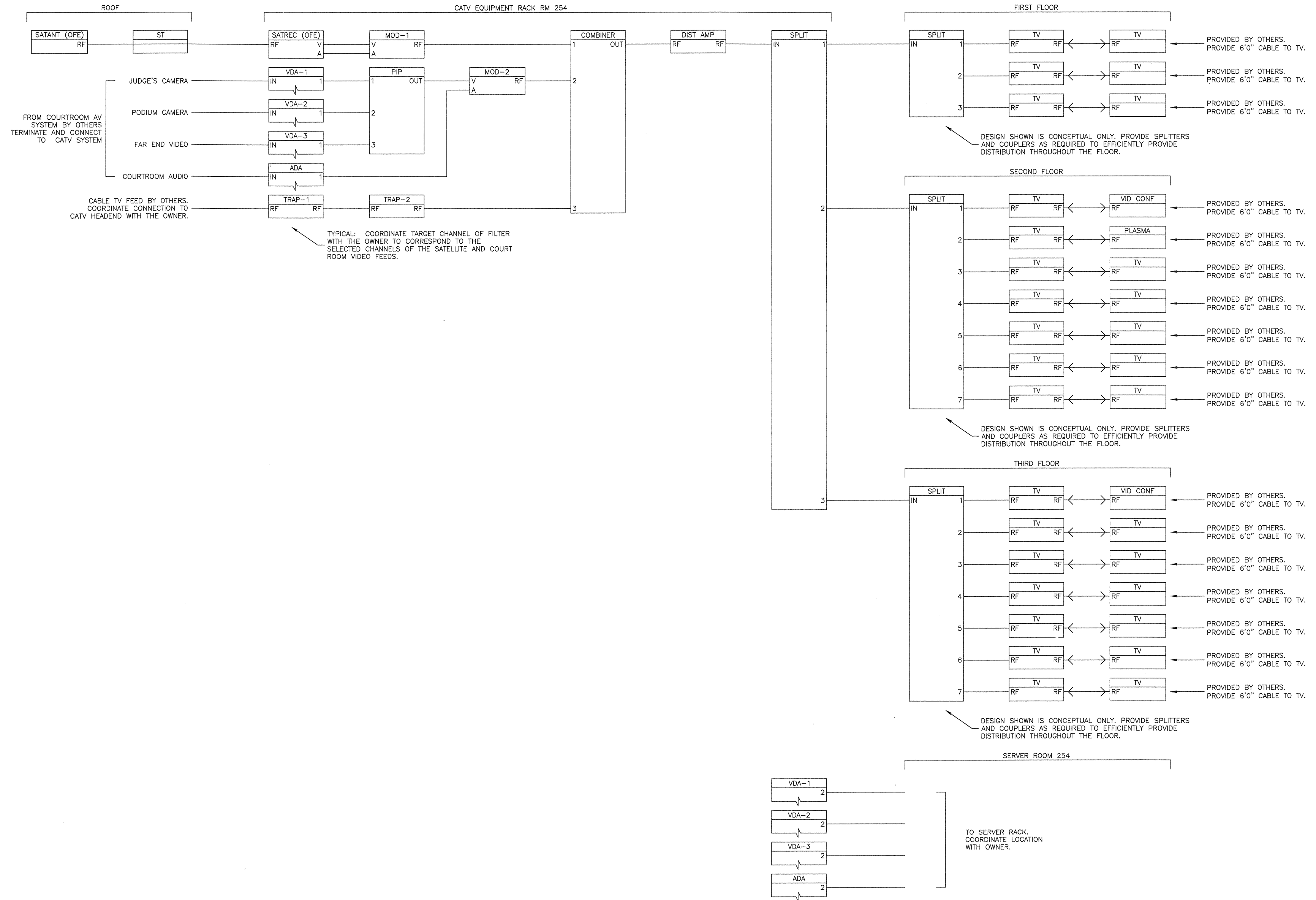
| COURT OF APPEAL                               |     |      |   | PROJECT NO. 505.001                             |    |      |      |                  |
|---|-----|------|---|---|----|------|------|------------------|
| VOLTS 120/208<br>PHASE 3PH, 4W<br>MTG SURFACE |     |      |   | PANELBOARD PIB<br>LOCATION 1ST FLOOR ELEC. ROOM |    |      |      |                  |
| MAIN L.D.<br>BUS 225 AMP                      |     |      |   |   |    |      |      |                  |
| 1   | 720 | 20/1 | 4 | CONV. RECEPT.                                   | 2  | 540  | 20/1 | STAFF LUNGE REC. |
| 3   | 720 | 20/1 | 4 | CONV. RECEPT.                                   | 4  | 540  | 20/1 | STAFF LUNGE REC. |
| 5   | 720 | 20/1 | 4 | CONV. RECEPT.                                   | 6  | 540  | 20/1 | STAFF LUNGE REC. |
| 7   | 720 | 20/1 | 4 | CONFERENCE ROOM RECEPT.                         | 8  | 1300 | 20/1 | GARBAGE DISPOSAL |
| 9   | 720 | 20/1 | 4 | CONFERENCE ROOM RECEPT.                         | 10 | 1000 | 20/1 | JIB/DRAWER       |
| 11  | 720 | 20/1 | 4 | CONFERENCE ROOM RECEPT.                         | 12 | 1000 | 20/1 | MISCELLANEOUS    |
| 13  | 720 | 20/1 | 4 | LIBRARY RECEPT.                                 | 14 | 1000 | 20/1 | REPAIR           |
| 15  | 720 | 20/1 | 4 | LIBRARY RECEPT.                                 | 16 | 500  | 20/1 | FLOOR BOX REC.   |
| 17  | 720 | 20/1 | 4 | LIBRARY RECEPT.                                 | 18 | 1000 | 20/1 | COPIER           |
| 19  | 720 | 20/1 | 4 | CONV. RECEPT.                                   | 20 | 500  | 20/1 | FLOOR BOX REC.   |
| 21  | 720 | 20/1 | 4 | CONV. RECEPT.                                   | 22 | 500  | 20/1 | FLOOR BOX REC.   |
| 23  | 720 | 20/1 | 4 | CONV. RECEPT.                                   | 24 | 720  | 20/1 | SPARE            |
| 25  | 720 | 20/1 | 4 | CONV. RECEPT.                                   | 26 | 720  | 20/1 | SPARE            |
| 27  | 720 | 20/1 | 4 | CONV. RECEPT.                                   | 28 | 720  | 20/1 | SPARE            |
| 29  | 720 | 20/1 | 4 | CONV. RECEPT.                                   | 30 | 720  | 20/1 | SPARE            |
| 31  | 720 | 20/1 | 4 | CONV. RECEPT.                                   | 32 | 720  | 20/1 | SPARE            |
| 33  | 720 | 20/1 | 4 | CONV. RECEPT.                                   | 34 | 720  | 20/1 | SPARE            |
| 35  | 720 | 20/1 | 4 | CONV. RECEPT.                                   | 36 | 720  | 20/1 | SPARE            |
| 37  | 720 | 20/1 | 4 | CONV. RECEPT.                                   | 38 | 720  | 20/1 | SPARE            |
| 39  | 720 | 20/1 | 4 | CONV. RECEPT.                                   | 40 | 720  | 20/1 | SPARE            |
| 41  | 720 | 20/1 | 4 | CONV. RECEPT.                                   | 42 | 720  | 20/1 | SPARE            |

|           |       |      |                            |       |                                       |
|-----------|-------|------|----------------------------|-------|---------------------------------------|
| CONNECTED | VA    | AMPS | L.C.L. @ 125% =            | 0     | LOAD TYPE:                            |
| PHASE A = | 6480  | 54   | RECEPT. ( ) 10 KVA @ 500 = | 13650 | G - GENERAL (1000) N - MOTOR (1000)   |
| PHASE B = | 5400  | 45   | KITCHEN @ 650 =            | 0     | L - L.C.L. (1250) M1 - MOTOR (1250)   |
| PHASE C = | 5400  | 45   | OTHER LOAD @ 1000 =        | 0     | R - RECEPTACLE (500) X - X-RAY (1000) |
| TOTAL =   | 17280 | 48   | TOTAL VA =                 | 13650 | (10 KVA @ 1000) XI - X-RAY (500)      |
|           |       |      | TOTAL AMPS =               | 38    | K - KITCHEN (650)                     |

| COURT OF APPEAL                               |     |      |   | PROJECT NO. 505.001                             |    |     |      |       |
|---|-----|------|---|---|----|-----|------|-------|
| VOLTS 120/208<br>PHASE 3PH, 4W<br>MTG SURFACE |     |      |   | PANELBOARD PIC<br>LOCATION 1ST FLOOR ELEC. ROOM |    |     |      |       |
| MAIN L.D.<br>BUS 225 AMP                      |     |      |   |   |    |     |      |       |
| 1   | 720 | 20/1 | 4 | CONV. RECEPT.                                   | 2  | 720 | 20/1 | SPARE |
| 3   | 720 | 20/1 | 4 | CONV. RECEPT.                                   | 4  | 720 | 20/1 | SPARE |
| 5   | 720 | 20/1 | 4 | CONV. RECEPT.                                   | 6  | 720 | 20/1 | SPARE |
| 7   | 720 | 20/1 | 4 | CONV. RECEPT.                                   | 8  | 720 | 20/1 | SPARE |
| 9   | 720 | 20/1 | 4 | CONV. RECEPT.                                   | 10 | 720 | 20/1 | SPARE |
| 11  | 720 | 20/1 | 4 | CONV. RECEPT.                                   | 12 | 720 | 20/1 | SPARE |
| 13  | 720 | 20/1 | 4 | CONV. RECEPT.                                   | 14 | 720 | 20/1 | SPARE |
| 15  | 720 | 20/1 | 4 | CONV. RECEPT.                                   | 16 | 720 | 20/1 | SPARE |
| 17  | 720 | 20/1 | 4 | CONV. RECEPT.                                   | 18 | 720 | 20/1 | SPARE |
| 19  | 720 | 20/1 | 4 | CONV. RECEPT.                                   | 20 | 720 | 20/1 | SPARE |
| 21  | 720 | 20/1 | 4 | CONV. RECEPT.                                   | 22 | 720 | 20/1 | SPARE |
| 23  | 720 | 20/1 | 4 | CONV. RECEPT.                                   | 24 | 720 | 20/1 | SPARE |
| 25  | 720 | 20/1 | 4 | CONV. RECEPT.                                   | 26 | 720 | 20/1 | SPARE |
| 27  | 720 | 20/1 | 4 | CONV. RECEPT.                                   | 28 | 720 | 20/1 | SPARE |
| 29  | 720 | 20/1 | 4 | CONV. RECEPT.                                   | 30 | 720 | 20/1 | SPARE |
| 31  | 720 | 20/1 | 4 | CONV. RECEPT.                                   | 32 | 720 | 20/1 | SPARE |
| 33  | 720 | 20/1 | 4 | CONV. RECEPT.                                   | 34 | 720 | 20/1 | SPARE |
| 35  | 720 | 20/1 | 4 | CONV. RECEPT.                                   | 36 | 720 | 20/1 | SPARE |
| 37  | 720 | 20/1 | 4 | CONV. RECEPT.                                   | 38 | 720 | 20/1 | SPARE |
| 39  | 720 | 20/1 | 4 | CONV. RECEPT.                                   | 40 | 720 | 20/1 | SPARE |
| 41  | 720 | 20/1 | 4 | CONV. RECEPT.                                   | 42 | 720 | 20/1 | SPARE |

|           |    |      |                 |   |            |
|-----------|----|------|-----------------|---|------------|
| CONNECTED | VA | AMPS | L.C.L. @ 125% = | 0 | LOAD TYPE: |
| PHASE A = |    |      |                 |   |            |

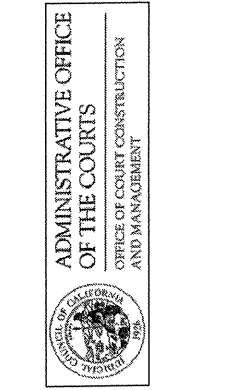
ALL IDEAS, DESIGN, ARRANGEMENTS AND PLANS INDICATED OR REPRESENTED BY THIS DRAWING ARE OWNED BY, AND THE PROPERTY OF CARRIER JOHNSON, AND WERE CREATED, EVOLVED AND DEVELOPED FOR USE ON, AND IN CONNECTION WITH THIS PROJECT. NONE OF SUCH IDEAS, DESIGN, ARRANGEMENTS, OR PLANS SHALL BE USED BY, OR DISCLOSED TO ANY PERSON, FIRM, OR CORPORATION FOR ANY PURPOSE WHATSOEVER WITHOUT THE WRITTEN PERMISSION OF CARRIER JOHNSON. FILING THESE DRAWINGS OR SPECIFICATIONS WITH ANY PUBLIC AGENCY IS NOT A PUBLICATION OF SAME. NO COPYING, REPRODUCTION OR USE THEREOF IS PERMISSIBLE WITHOUT THE CONSENT OF CARRIER JOHNSON.



**carrierjohnson**  
 architecture for urban environments  
 1301 third avenue san diego ca 92101  
 phone 619.239.2353 | fax 619.239.6227

**VSA**  
 Associates  
 Acoustics  
 Audio Visual  
 Noise  
 Vibration  
 Consultants  
 12525 Lumber 1 Rd. Whittier, CA 90606  
 Tel. 562-898-2668 Fax: 562-898-2319

**COURT OF APPEAL  
 FOURTH APPELLATE DISTRICT  
 DIVISION THREE  
 SANTA ANA, CA**

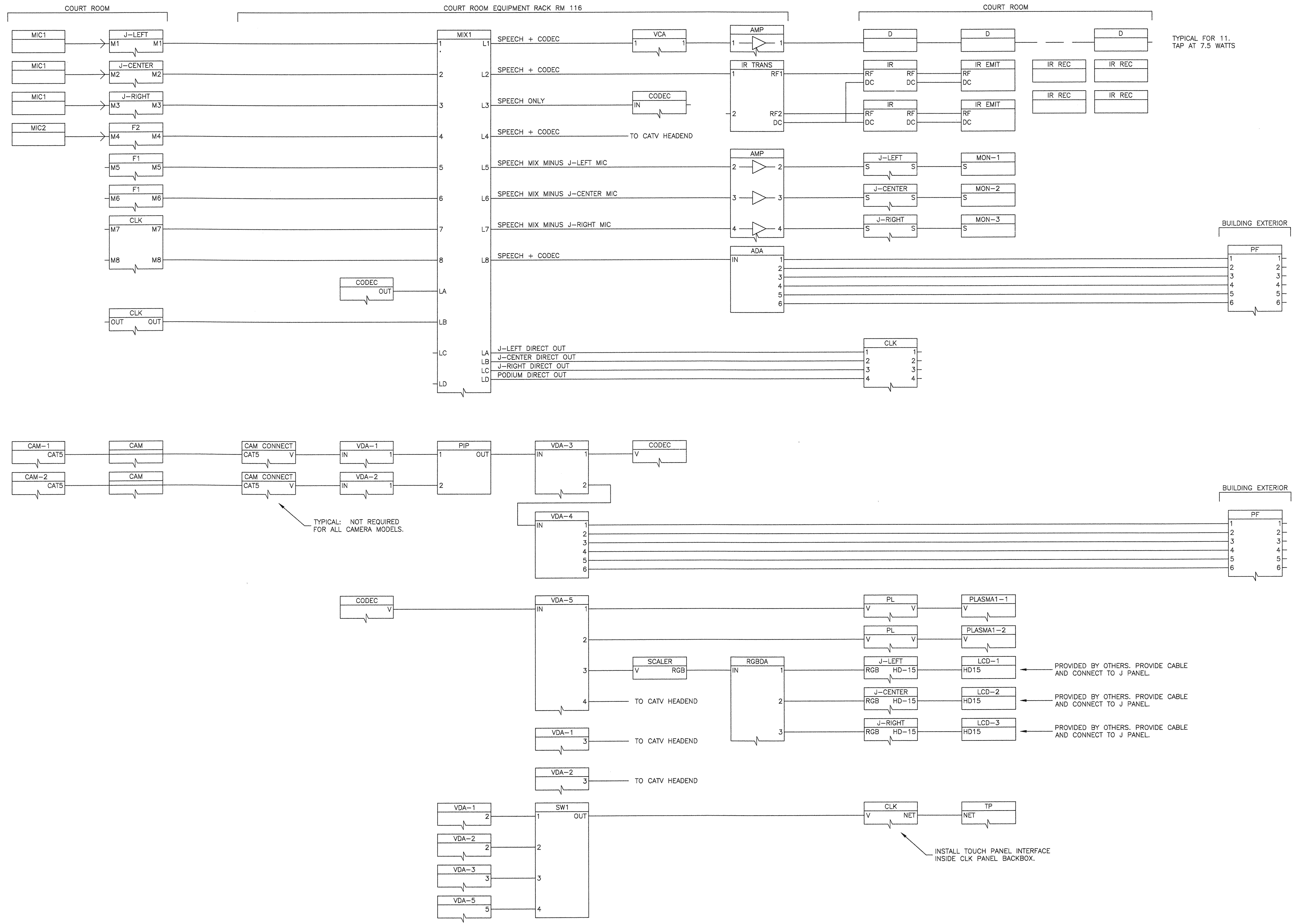


02-09-07 50% CD SUBMITTAL  
 ISSUES.

PROJECT NO:  
 AV4.0  
 FILENAME:  
 DRAWN BY: CHECKED BY:  
 TSH TSH  
 PLOT DATE:  
 TITLE:  
**CATV SYSTEM  
 SINGLE LINE  
 DIAGRAM**

DRAWING NO:  
**AV4.0**

ALL IDEAS, DESIGN, ARRANGEMENTS AND PLANS INDICATED OR REPRESENTED BY THIS DRAWING ARE OWNED BY, AND THE PROPERTY OF CARRIER-JOHNSON. AND WERE CREATED, EVOLVED AND DEVELOPED FOR USE ON, AND IN CONNECTION WITH THIS PROJECT. NONE OF SUCH IDEAS, DESIGN, ARRANGEMENTS, OR PLANS SHALL BE USED BY, OR DISCLOSED TO ANY PERSON, FIRM, OR CORPORATION FOR ANY PURPOSE WHATSOEVER WITHOUT THE WRITTEN PERMISSION OF CARRIER-JOHNSON. FILING THESE DRAWINGS OR SPECIFICATIONS WITH ANY PUBLIC AGENCY IS NOT A PUBLICATION OF SAME. NO COPYING, REPRODUCTION OR USE THEREOF IS PERMISSIBLE WITHOUT THE CONSENT OF CARRIER-JOHNSON.



TYPICAL FOR 11.  
TAP AT 7.5 WATTS

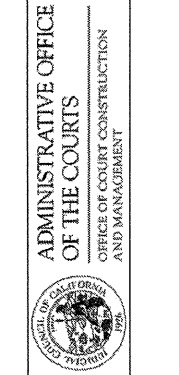
TYPICAL: NOT REQUIRED FOR ALL CAMERA MODELS.

INSTALL TOUCH PANEL INTERFACE INSIDE CLK PANEL BACKBOX.

**carrierjohnson**  
architecture for urban environments  
1301 third avenue san diego ca 92101  
phone 619.239.2353 | fax 619.239.6227

**VSA**  
Associates  
Audio Visual  
Noise  
Variation  
Consultants  
12255 Lumber 1 Rd. Whittier, CA 90608  
Tel: 402-688-3498 Fax: 927-955-2339

**COURT OF APPEAL  
FOURTH APPELLATE DISTRICT  
DIVISION THREE  
SANTA ANA, CA**



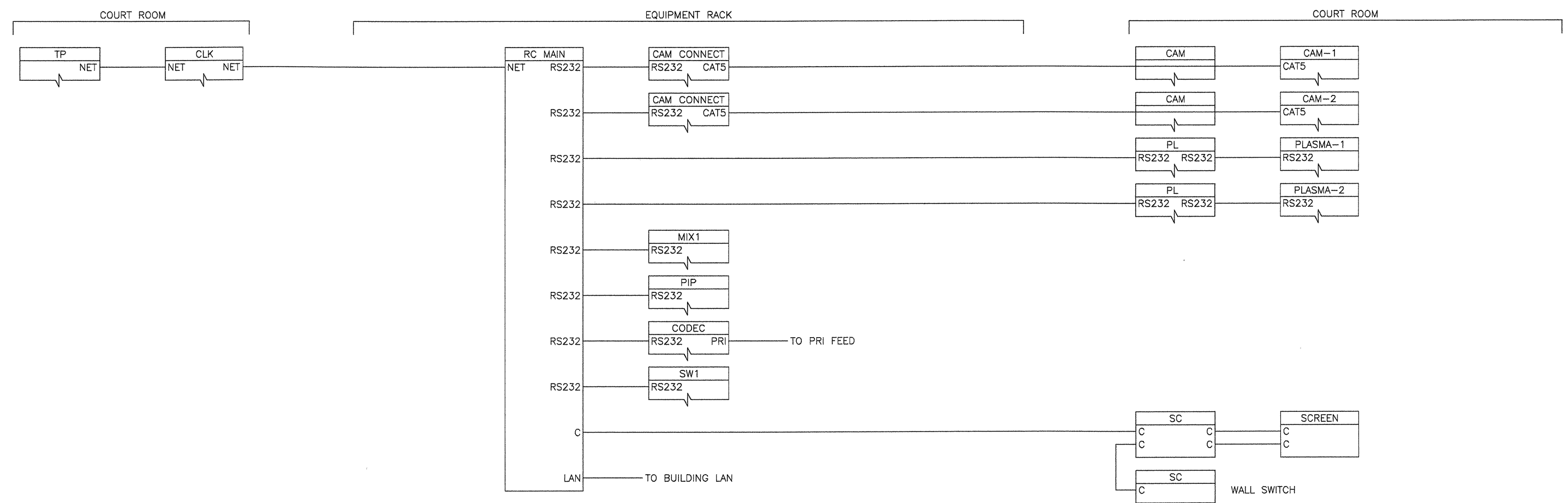
02-09-07 50% CD SUBMITTAL  
ISSUES:

PROJECT NO:  
AV4.0  
FILENAME:  
DRAWN BY: TSH  
CHECKED BY: TSH  
PLOT DATE:

TITLE:  
**COURTROOM  
AUDIO-VISUAL  
SINGLE LINE  
DIAGRAM**

DRAWING NO:  
**AV4.1**

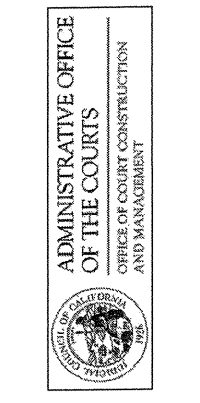
ALL IDEAS, DESIGN, ARRANGEMENTS AND PLANS INDICATED OR REPRESENTED BY THIS DRAWING ARE OWNED BY, AND THE PROPERTY OF CARRIER JOHNSON AND WERE CREATED, EVOLVED AND DEVELOPED FOR USE ON, AND IN CONNECTION WITH THIS PROJECT. NONE OF SUCH IDEAS, DESIGN, ARRANGEMENTS, OR PLANS SHALL BE USED BY, OR DISCLOSED TO ANY PERSON, FIRM, OR CORPORATION FOR ANY PURPOSE WHATSOEVER WITHOUT THE WRITTEN PERMISSION OF CARRIER JOHNSON. FILING THESE DRAWINGS OR SPECIFICATIONS WITH ANY PUBLIC AGENCY IS NOT A PUBLICATION OF SAME. NO COPYING, REPRODUCTION OR USE THEREOF IS PERMISSIBLE WITHOUT THE CONSENT OF CARRIER JOHNSON.



**carrierjohnson**  
 architecture for urban environments  
 1301 third avenue san diego ca 92101  
 phone 619.239.2353 | fax 619.239.6227

**VSA**  
 n  
 Associates  
 Acoustics  
 Audio Visual  
 Noise  
 Vibration  
 Consultants  
 1225 Lumber 1 Rd. Whittier, CA 90608  
 Tel: 909-698-2448 Fax: 909-698-2339

**COURT OF APPEAL  
 FOURTH APPELLATE DISTRICT  
 DIVISION THREE  
 SANTA ANA, CA**



02-09-07 50% CD SUBMITTAL  
 ISSUES

PROJECT NO:  
 AV4.0  
 FILENAME:  
 DRAWN BY: TSH CHECKED BY:  
 PLOT DATE: TSH

TITLE:  
**COURTROOM  
 AUDIO-VISUAL  
 CONTROL SINGLE  
 LINE DIAGRAM**

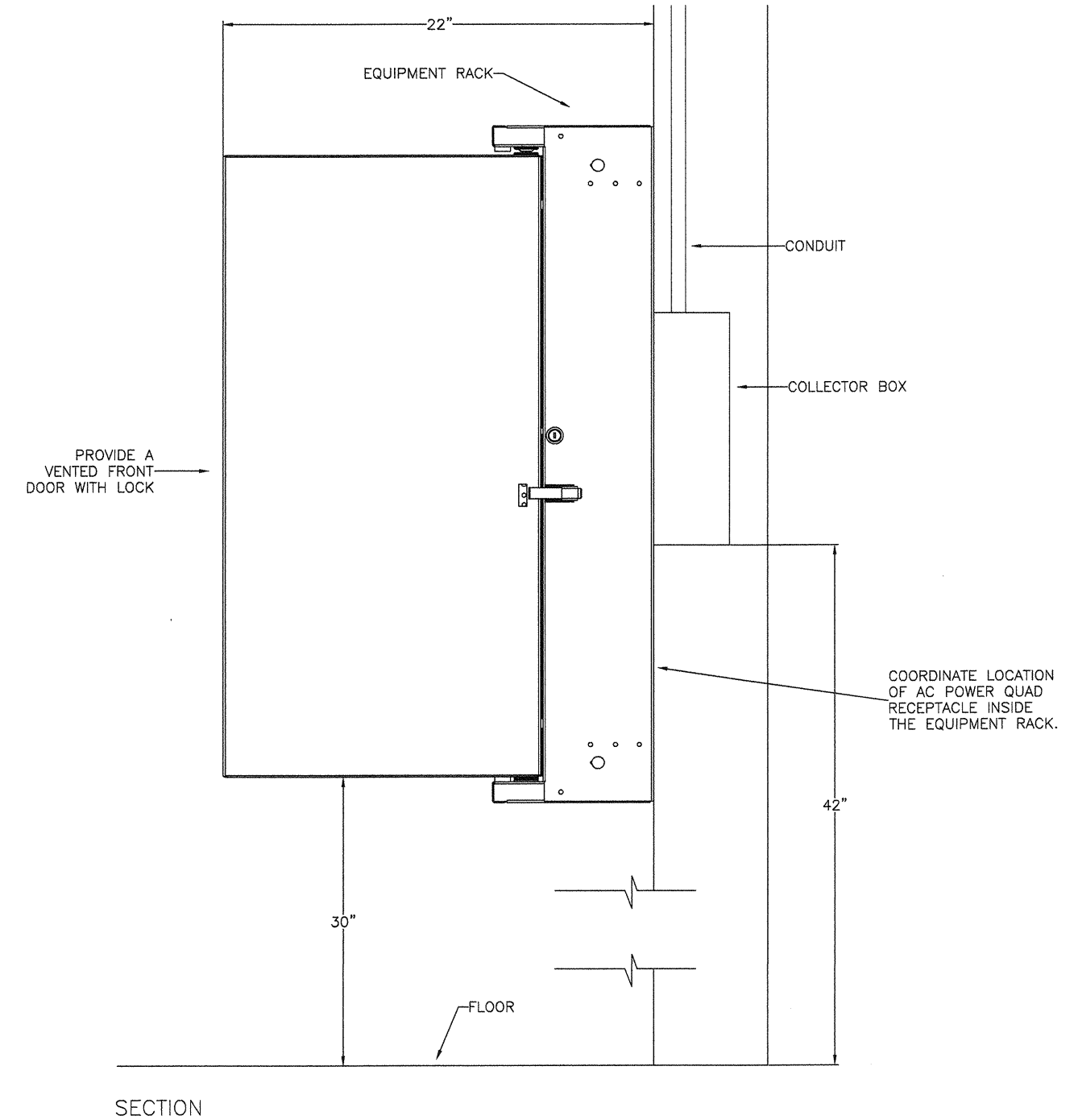
DRAWING NO:  
**AV4.2**

ALL IDEAS, DESIGN, ARRANGEMENTS AND PLANS INDICATED OR REPRESENTED BY THIS DRAWING ARE OWNED BY, AND THE PROPERTY OF CARRIER JOHNSON AND WERE CREATED, EVOLVED AND DEVELOPED FOR USE ON, AND IN CONNECTION WITH THIS PROJECT. NONE OF SUCH IDEAS, DESIGN, ARRANGEMENTS, OR PLANS SHALL BE USED BY, OR DISCLOSED TO ANY PERSON, FIRM, OR CORPORATION FOR ANY PURPOSE WHATSOEVER WITHOUT THE WRITTEN PERMISSION OF CARRIER JOHNSON. FILING THESE DRAWINGS OR SPECIFICATIONS WITH ANY PUBLIC AGENCY IS NOT A PUBLICATION OF SAME. NO COPYING, REPRODUCTION OR USE THEREOF IS PERMISSIBLE WITHOUT THE CONSENT OF CARRIER JOHNSON.

|          |       |       |
|----------|-------|-------|
| VENT     |       |       |
| DIST AMP |       |       |
| VENT     |       |       |
| COMBINER |       |       |
| TRAP-1   |       |       |
| TRAP-2   |       |       |
| MOD-1    |       |       |
| SAT REC  |       |       |
| BLANK    |       |       |
| MOD-2    |       |       |
| PIP      |       |       |
| VDA-1    | VDA-2 | VDA-3 |
| ADA      | BLANK | BLANK |
| BLANK    |       |       |

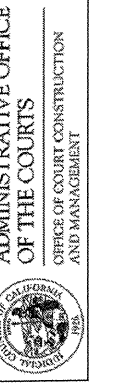
PROVIDE RACK SHELF

ELEVATION



1 CATV EQUIPMENT RACK DETAIL  
SCALE: 3" = 1'0"

COURT OF APPEAL  
FOURTH APPELLATE DISTRICT  
DIVISION THREE  
SANTA ANA, CA



02-08-07 50% CD SUBMITTAL  
ISSUES:

PROJECT NO: \_\_\_\_\_  
AVIS 0  
FILENAME: \_\_\_\_\_  
DRAWN BY: \_\_\_\_\_ CHECKED BY: TSH  
PLOT DATE: \_\_\_\_\_

TITLE:  
CATV SYSTEM  
AUDIO-VISUAL  
RACK DETAIL

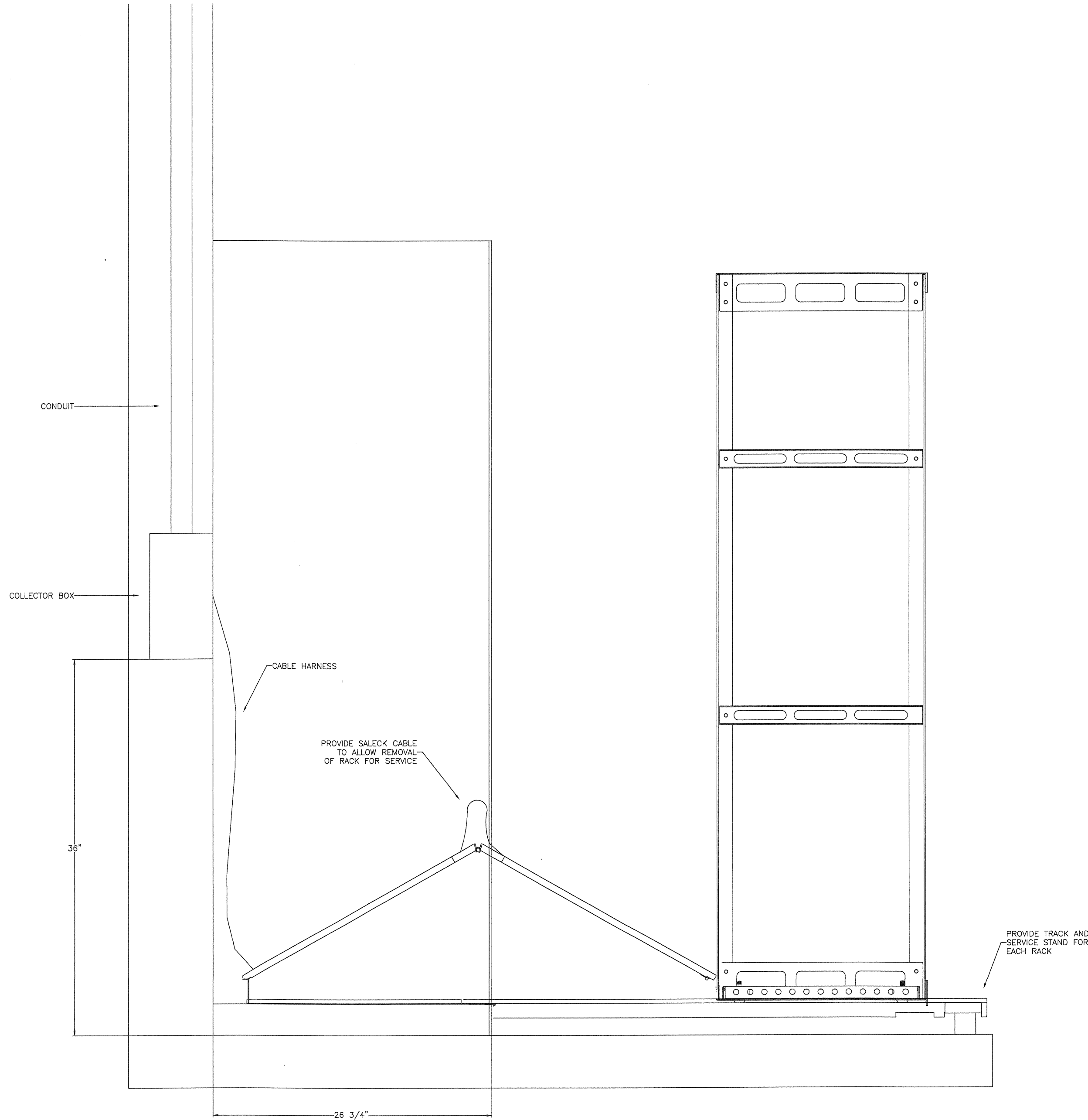
DRAWING NO:

AV6.0

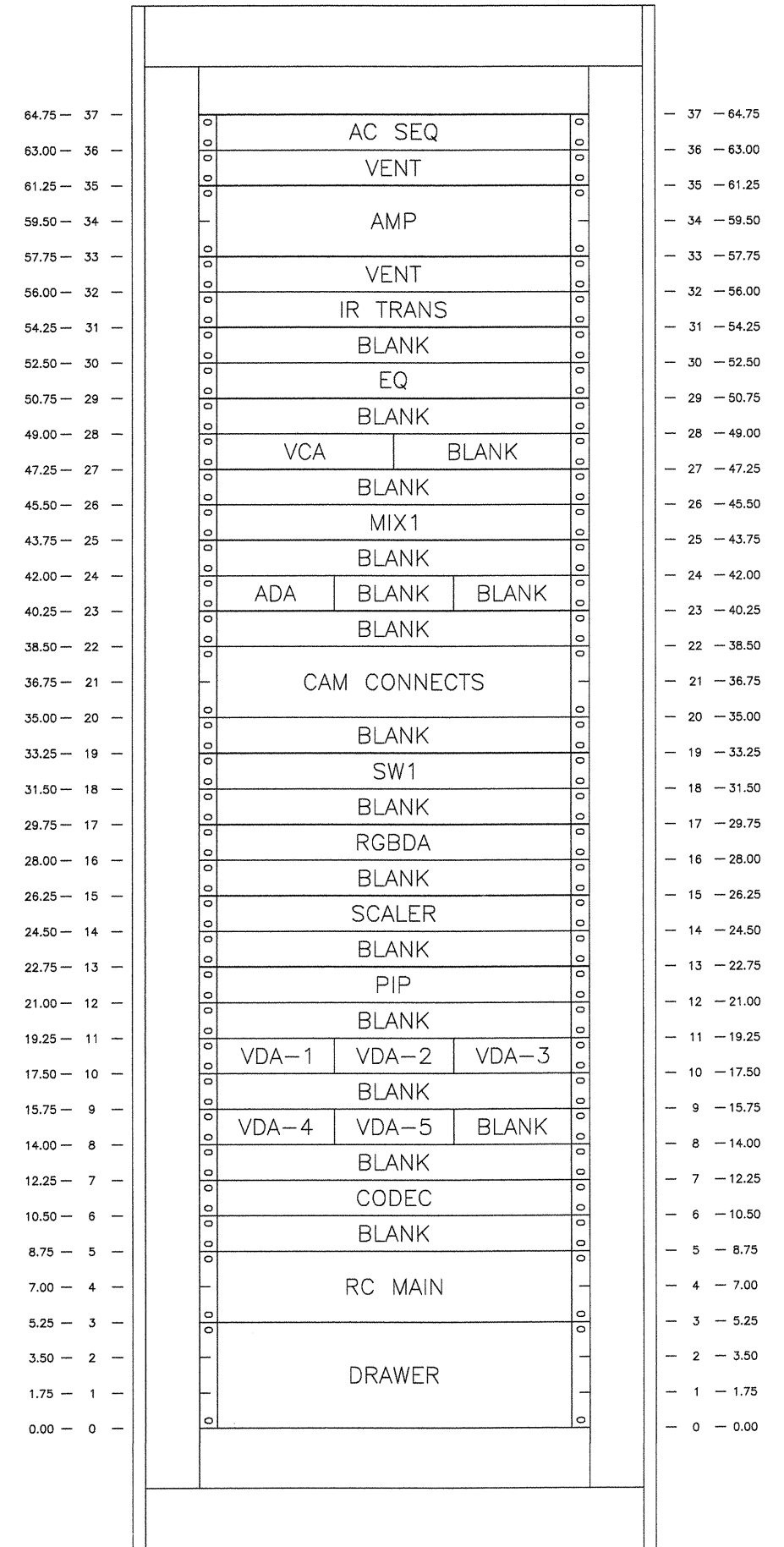
VSA  
Associates  
Acoustics  
Audio Visual  
Noise  
Vibration  
Consultants  
1255 Lumber 1 Rd, Whittier, CA 92606  
Tel: 562-698-3488 Fax: 562-698-2339

carrierjohnson  
architecture for urban environments  
1301 third avenue san diego ca 92101  
phone 619.239.2353 | fax 619.239.6227

ALL IDEAS, DESIGN, ARRANGEMENTS AND PLANS INDICATED OR REPRESENTED BY THIS DRAWING ARE OWNED BY, AND THE PROPERTY OF, CARRIER JOHNSON AND WERE CREATED, EVOLVED AND DEVELOPED FOR USE ON, AND IN CONNECTION WITH THIS PROJECT. NONE OF SUCH IDEAS, DESIGN, ARRANGEMENTS, OR PLANS SHALL BE USED BY, OR DISCLOSED TO ANY PERSON, FIRM, OR CORPORATION FOR ANY PURPOSE WHATSOEVER WITHOUT THE WRITTEN PERMISSION OF CARRIER JOHNSON. FILING THESE DRAWINGS OR SPECIFICATIONS WITH ANY PUBLIC AGENCY IS NOT A PUBLICATION OF SAME. NO COPYING, REPRODUCTION OR USE THEREOF IS PERMISSIBLE WITHOUT THE CONSENT OF CARRIER JOHNSON.



2 SECTION THROUGH EQUIPMENT RACK  
SCALE: 3" = 1'0"



1 EQUIPMENT RACK ELEVATION  
SCALE: 3" = 1'0"

VSA  
Associates  
Acoustics  
Audio Visual  
Noise  
Vibration  
Consultants  
13255 Latham Rd. Whittier, CA 90609  
Tel: 562-898-2468 Fax: 562-498-2339

COURT OF APPEAL  
FOURTH APPELLATE DISTRICT  
DIVISION THREE  
SANTA ANA, CA



02-09-07 60% CD SUBMITTAL  
ISSUES:

PROJECT NO:  
AV6.0  
FILENAME:  
DRAWN BY: TSH  
CHECKED BY: TSH  
PLOT DATE:

TITLE:  
COURT ROOM  
AUDIO-VISUAL  
RACK DETAIL

DRAWING NO:  
AV6.1

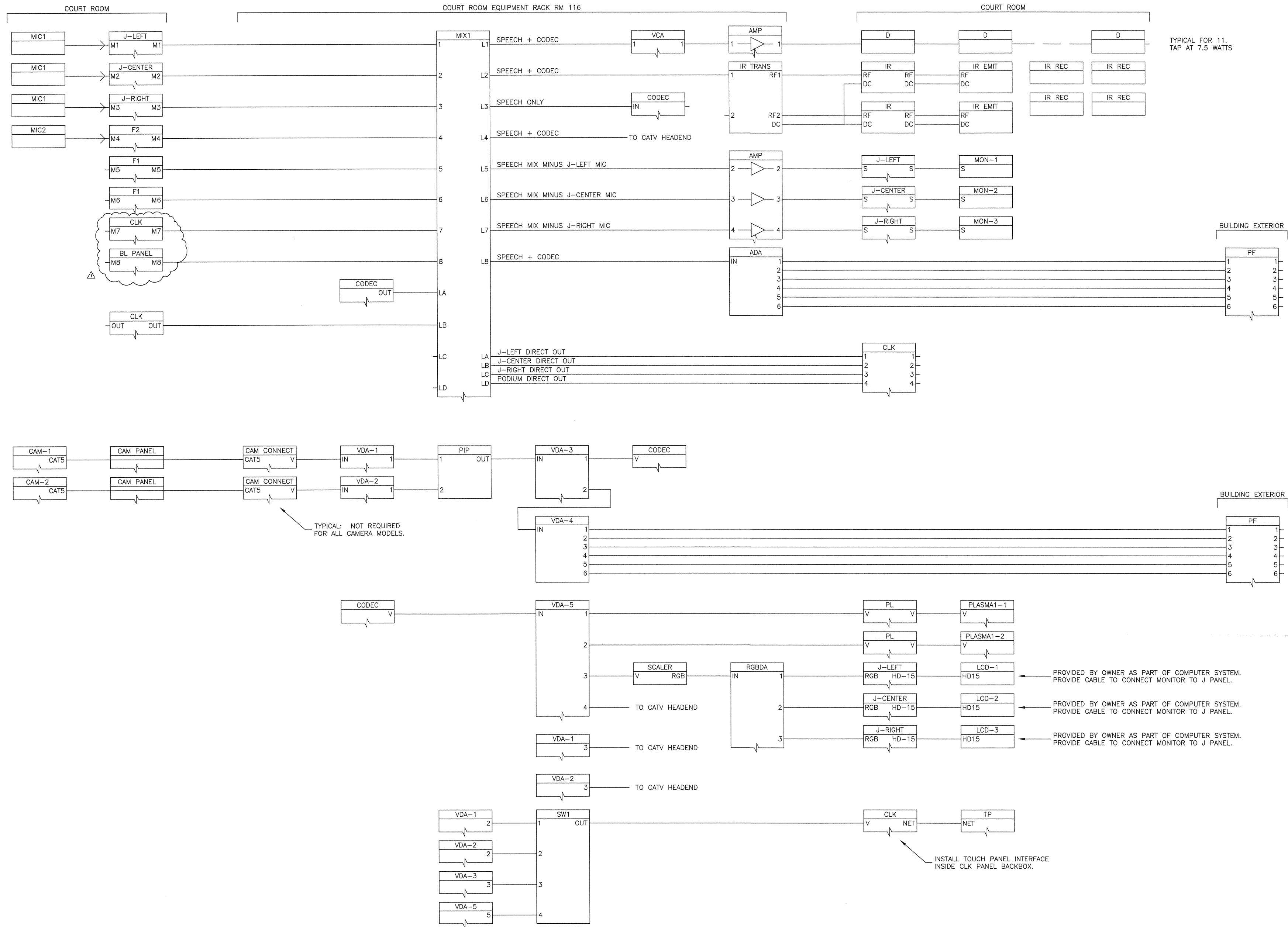
carrierjohnson  
architecture for urban environments  
1301 third avenue san diego ca 92101  
phone 619.239.2353 | fax 619.239.6227







ALL IDEAS, DESIGN, ARRANGEMENTS AND PLANS INDICATED OR REPRESENTED BY THIS DRAWING ARE OWNED BY AND THE PROPERTY OF CARRIER JOHNSON AND WERE CREATED, EVOLVED AND DEVELOPED FOR USE ON AND IN CONNECTION WITH THIS PROJECT. NONE OF SUCH IDEAS, DESIGN, ARRANGEMENTS, OR PLANS SHALL BE USED BY, OR DISCLOSED TO ANY PERSON, FIRM OR CORPORATION FOR ANY PURPOSE WHATSOEVER WITHOUT THE WRITTEN PERMISSION OF CARRIER JOHNSON. PLEASE REPRODUCE OR REPRODUCE IN ANY MANNER WITHOUT THE WRITTEN PERMISSION OF CARRIER JOHNSON.



TYPICAL FOR 11.  
TAP AT 7.5 WATTS

TYPICAL: NOT REQUIRED FOR ALL CAMERA MODELS.

PROVIDED BY OWNER AS PART OF COMPUTER SYSTEM. PROVIDE CABLE TO CONNECT MONITOR TO J PANEL.

PROVIDED BY OWNER AS PART OF COMPUTER SYSTEM. PROVIDE CABLE TO CONNECT MONITOR TO J PANEL.

PROVIDED BY OWNER AS PART OF COMPUTER SYSTEM. PROVIDE CABLE TO CONNECT MONITOR TO J PANEL.

INSTALL TOUCH PANEL INTERFACE INSIDE CLK PANEL BACKBOX.

**carrierjohnson**  
architecture for urban environments  
1301 Third Avenue San Diego, CA 92101  
phone 619.239.2303 fax 619.239.6227

**VSA**  
Associates  
Acoustics  
Audio Visual  
Noise  
Vibration  
Consultants  
12525 Lumber Rd. Whittier, CA 90606  
Tel: 562-699-2468 Fax: 562-699-2339

**COURT OF APPELLATE DISTRICT  
FOURTH APPELLATE DISTRICT  
DIVISION THREE**  
601 WEST SANTA ANA BOULEVARD  
SANTA ANA, CA

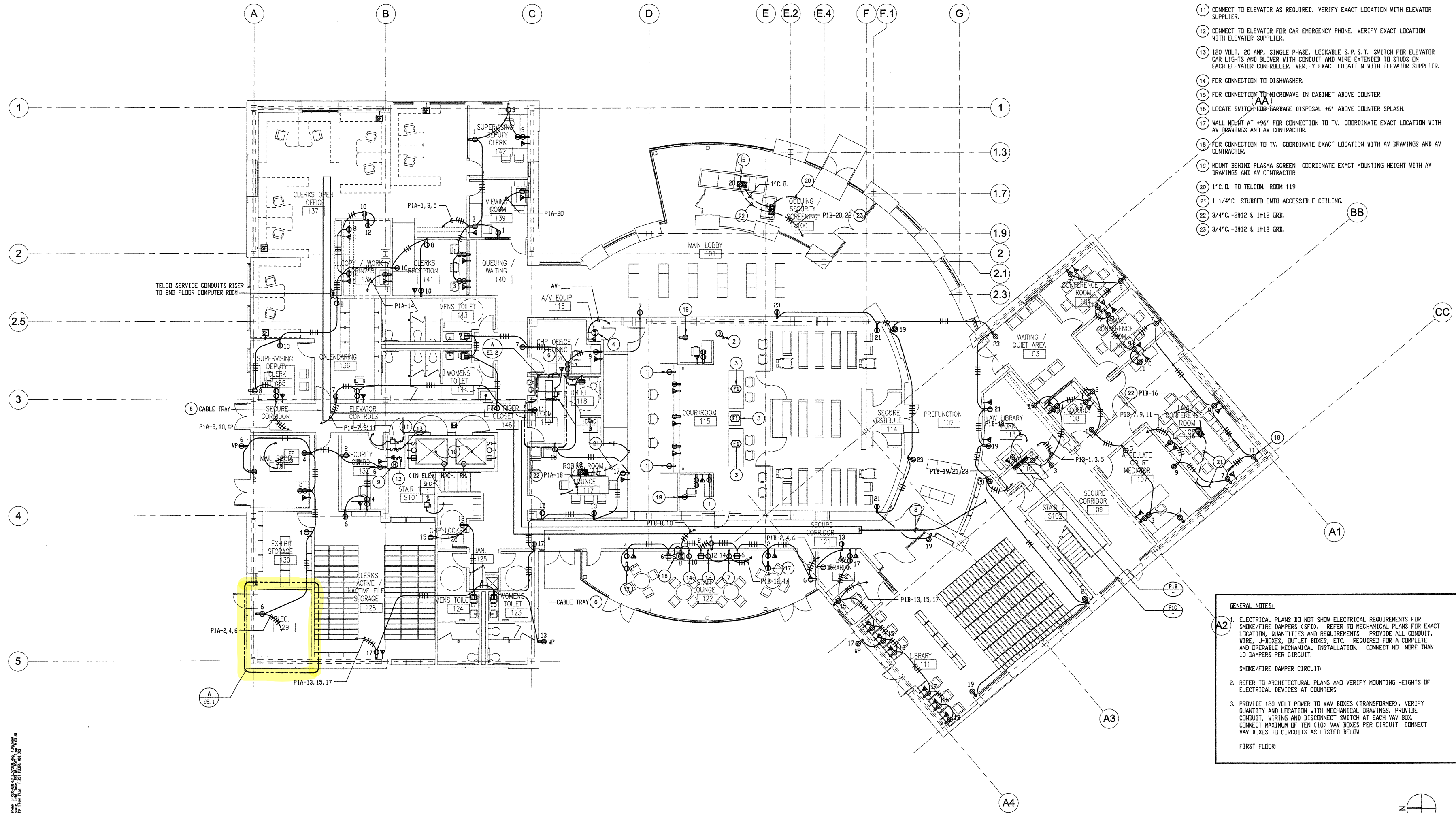
ADMINISTRATIVE OFFICE  
OF THE COURTS  
OFFICE OF COURT CONSTRUCTION  
AND MANAGEMENT

04-23-08 ASI #017  
07-16-07 FOR CONSTRUCTION ISSUES:

PROJECT NO:  
AV4.0  
FILE NAME:  
DRAWN BY: TSH  
CHECKED BY: TSH  
PLOT DATE:  
TITLE:  
**COURTROOM  
AUDIO-VISUAL  
SINGLE LINE  
DIAGRAM**  
DRAWING NO:

AV4.1

ALL IDEAS, DESIGN ARRANGEMENTS AND PLANS INDICATED OR REPRESENTED BY THIS DRAWING ARE OWNED BY, AND THE PROPERTY OF, CARRIER JOHNSON AND WERE CREATED, DEVELOPED AND DELIVERED FOR USE ON, AND IN CONNECTION WITH THIS PROJECT. NONE OF SUCH IDEAS, DESIGN ARRANGEMENTS, OR PLANS SHALL BE USED BY, OR DISCLOSED TO ANY PERSON, FIRM, OR CORPORATION FOR ANY PURPOSE WHATSOEVER WITHOUT THE WRITTEN PERMISSION OF CARRIER JOHNSON. FILING THESE DRAWINGS OR SPECIFICATIONS WITH ANY PUBLIC AGENCY IS NOT A PUBLICATION OR USE THEREOF. REPRODUCTION OR USE THEREOF IS PERMISSIBLE WITHOUT THE CONSENT OF CARRIER JOHNSON.



- PLAN NOTES:**
- ISOLATED GROUND RECEPTACLE FOR AV POWER.
  - CONNECT TO MOTORIZED PROJECTION SCREEN.
  - FLOOR BOX WITH ONE ISOLATED GROUND RECEPTACLE FOR AV POWER AND ONE TELECOMMUNICATION OUTLET.
  - TWO ISOLATED GROUND CIRCUITS FOR AV EQUIPMENT RACK.
  - FOR CONNECTION TO MAGNETOMETER AND X-RAY MACHINE.
  - CENTER SPINE TYPE CABLE TRAY, 18" WIDE X 3" DEEP LOAD CAPACITY WITH RUNGS 6" ON CENTER. MAINTAIN MINIMUM 24" ACCESS TO ONE SIDE OF TRAY AND 12" ACCESS ABOVE TRAY. TELECOMMUNICATION CABLING SHALL RUN ON ONE SIDE OF TRAY. SECURITY CABLING SHALL RUN ON OPPOSITE SIDE OF TRAY.
  - FOR CONNECTION TO UNDER COUNTER REFRIGERATOR.
  - (2) 4" CONDUITS FOR TELECOMMUNICATION AND (1) 4" CONDUIT FOR SECURITY CABLING.
  - HEAT DETECTOR IN ELEVATOR MACHINE ROOM LOCATED WITHIN 2' - 0" OF EVERY SPRINKLER HEAD. VERIFY LOCATIONS AND QUANTITIES WITH FIRE PROTECTION DRAWINGS. CONNECT TO FIRE ALARM SYSTEM AND TO SHUNT TRIP CIRCUIT BREAKER TO SHUT-OFF POWER TO ELEVATOR WHEN DETECTOR IS ACTIVATED.
  - LOCATE DEVICES IN ELEVATOR PIT PER ELEVATOR SUPPLIER REQUIREMENTS. LIGHT FIXTURE TO BE LOCATED ON OPPOSITE CORNERS AND SHALL BE FLUORESCENT WALL MOUNT WITH GLASS GLOBE AND GUARD. CANLET #GFWF26H16SC WITH 25 WATT LAMP.
  - CONNECT TO ELEVATOR AS REQUIRED. VERIFY EXACT LOCATION WITH ELEVATOR SUPPLIER.
  - CONNECT TO ELEVATOR FOR CAR EMERGENCY PHONE. VERIFY EXACT LOCATION WITH ELEVATOR SUPPLIER.
  - 120 VOLT, 20 AMP, SINGLE PHASE, LOCKABLE S.P.S.T. SWITCH FOR ELEVATOR CAR LIGHTS AND BLOWER WITH CONDUIT AND WIRE EXTENDED TO STUDS ON EACH ELEVATOR CONTROLLER. VERIFY EXACT LOCATION WITH ELEVATOR SUPPLIER.
  - FOR CONNECTION TO DISHWASHER.
  - FOR CONNECTION TO MICROWAVE IN CABINET ABOVE COUNTER.
  - LOCATE SWITCH FOR GARBAGE DISPOSAL +6" ABOVE COUNTER SPLASH.
  - WALL MOUNT AT +96" FOR CONNECTION TO TV. COORDINATE EXACT LOCATION WITH AV DRAWINGS AND AV CONTRACTOR.
  - FOR CONNECTION TO TV. COORDINATE EXACT LOCATION WITH AV DRAWINGS AND AV CONTRACTOR.
  - MOUNT BEHIND PLASMA SCREEN. COORDINATE EXACT MOUNTING HEIGHT WITH AV DRAWINGS AND AV CONTRACTOR.
  - 1" C.D. TO TELCOM. ROOM 119.
  - 1 1/4" C. STUBBED INTO ACCESSIBLE CEILING.
  - 3/4" C. -2#12 & 1#12 GRD.
  - 3/4" C. -3#12 & 1#12 GRD.

- GENERAL NOTES:**
- ELECTRICAL PLANS DO NOT SHOW ELECTRICAL REQUIREMENTS FOR SMOKE/FIRE DAMPERS (SFD). REFER TO MECHANICAL PLANS FOR EXACT LOCATION, QUANTITIES AND REQUIREMENTS. PROVIDE ALL CONDUIT, WIRE, J-BOXES, OUTLET BOXES, ETC. REQUIRED FOR A COMPLETE AND OPERABLE MECHANICAL INSTALLATION. CONNECT NO MORE THAN 10 DAMPERS PER CIRCUIT.  
SMOKE/FIRE DAMPER CIRCUIT:
  - REFER TO ARCHITECTURAL PLANS AND VERIFY MOUNTING HEIGHTS OF ELECTRICAL DEVICES AT COUNTERS.
  - PROVIDE 120 VOLT POWER TO VAV BOXES (TRANSFORMER). VERIFY QUANTITY AND LOCATION WITH MECHANICAL DRAWINGS. PROVIDE CONDUIT, WIRING AND DISCONNECT SWITCH AT EACH VAV BOX. CONNECT MAXIMUM OF TEN (10) VAV BOXES PER CIRCUIT. CONNECT VAV BOXES TO CIRCUITS AS LISTED BELOW.
- FIRST FLOOR:

**carrierjohnson**  
architecture for urban environments  
phone 619.239.2353 | fax 619.239.6227  
1301 third avenue san diego ca 92101

**FBA Engineering**  
Civil, Mechanical, Electrical, Plumbing, Fire Protection, and Structural Engineering  
1301 Third Avenue, Suite 200, San Diego, CA 92101  
Phone: 619.239.2353  
Email: fba@fbaengineering.net  
FBA # 505.001

**COURT OF APPEAL DISTRICT  
FOURTH APPELLATE DISTRICT  
DIVISION THREE  
SANTA ANA, CA**

**ADMINISTRATIVE OFFICE  
OF THE COURTS  
OFFICE OF COURT CONSTRUCTION  
AND MANAGEMENT**

02-09-07 50% CD SUBMITTAL  
ISSUES:

PROJECT NO:  
FILENAME:  
E3\_1\_505001  
DRAWN BY: CHECKED BY:  
PLOT DATE:  
2-08-07  
TITLE:

**FIRST FLOOR  
POWER & SIGNAL  
PLAN**

DRAWING NO:

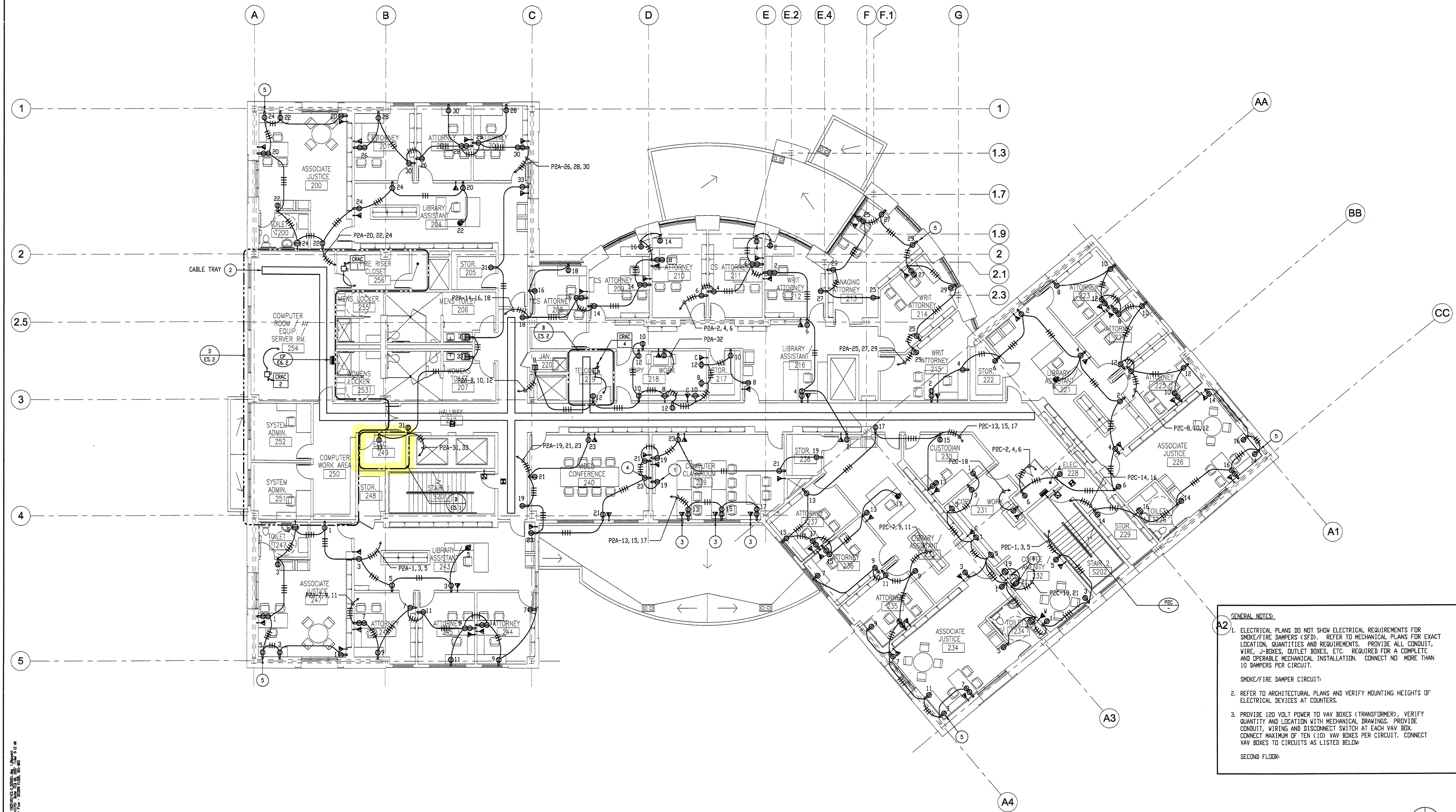
**E3.1**

**FIRST FLOOR POWER AND SIGNAL PLAN**

SCALE  
1/8" = 1'-0" A



ALL IDEAS, DESIGN ARRANGEMENTS AND PLANS INDICATED BY THIS DRAWING ARE OWNED BY AND THE PROPERTY OF CARRIER JOHNSON AND WERE CREATED, DEVELOPED AND DESIGNED FOR USE ON, AND IN CONNECTION WITH THIS PROJECT. NONE OF SUCH IDEAS, DESIGN ARRANGEMENTS, OR PLANS SHALL BE USED BY, OR DISCLOSED TO ANY PERSON, FIRM, OR CORPORATION FOR ANY PURPOSE WHATSOEVER WITHOUT THE WRITTEN PERMISSION OF CARRIER JOHNSON. FILING THESE DRAWINGS OR SPECIFICATIONS WITH ANY PUBLIC AGENCY IS NOT A PUBLICATION OF SAME. NO COPYING, REPRODUCTION OR USE THEREOF IS PERMISSIBLE WITHOUT THE CONSENT OF CARRIER JOHNSON.



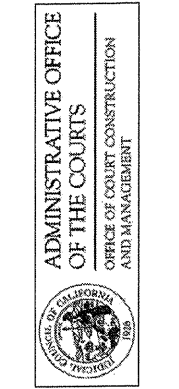
- PLAN NOTES:**
- 1 MOUNT BEHIND PLASMA SCREEN. COORDINATE EXACT MOUNTING HEIGHT WITH AV DRAWINGS AND AV CONTRACTOR.
  - 2 CENTER SPINE TYPE CABLE TRAY. 18" WIDE X 3" DEEP LOAD CAPACITY WITH RUNGS 6" ON CENTER. MAINTAIN MINIMUM 24" ACCESS TO ONE SIDE OF TRAY AND 12" ACCESS ABOVE TRAY. TELECOMMUNICATION CABLE SHALL RUN ON ONE SIDE OF TRAY. SECURITY CABLE SHALL RUN ON OPPOSITE SIDE OF TRAY.
  - 3 TELECOMMUNICATION OUTLET SHALL BE PROVIDED WITH 4 DATA CABLES ONLY. VOICE CABLE NOT REQUIRED.
  - 4 MOUNT BEHIND VIDEO CONFERENCE TV SCREEN. COORDINATE EXACT MOUNTING HEIGHT WITH AV DRAWINGS AND AV CONTRACTOR.
  - 5 FOR CONNECTION TO TV. COORDINATE EXACT LOCATION WITH AV DRAWINGS AND AV CONSULTANT.
  - 6 CONNECT AS REQUIRED TO GARBAGE DISPOSAL. LOCATE SWITCH FOR GARBAGE DISPOSAL +6" ABOVE COUNTER SPLASH.

- GENERAL NOTES:**
1. ELECTRICAL PLANS DO NOT SHOW ELECTRICAL REQUIREMENTS FOR SMOKE/FIRE DAMPERS (SFD). REFER TO MECHANICAL PLANS FOR EXACT LOCATION, QUANTITIES AND REQUIREMENTS. PROVIDE ALL CONDUIT, WIRE, J-BOXES, OUTLET BOXES, ETC. REQUIRED FOR A COMPLETE AND OPERABLE MECHANICAL INSTALLATION. CONNECT NO MORE THAN 10 DAMPERS PER CIRCUIT.  
SMOKE/FIRE DAMPER CIRCUIT:
  2. REFER TO ARCHITECTURAL PLANS AND VERIFY MOUNTING HEIGHTS OF ELECTRICAL DEVICES AT COUNTERS.
  3. PROVIDE 120 VOLT POWER TO VAV BOXES (TRANSFORMER). VERIFY QUANTITY AND LOCATION WITH MECHANICAL DRAWINGS. PROVIDE CONDUIT, WIRING AND DISCONNECT SWITCH AT EACH VAV BOX. CONNECT MAXIMUM OF TEN (10) VAV BOXES PER CIRCUIT. CONNECT VAV BOXES TO CIRCUITS AS LISTED BELOW.
- SECOND FLOOR:

**carrierjohnson**  
architecture for urban environments  
1301 third avenue san diego ca 92101  
phone 619.239.2395 | fax 619.239.6227

**FBA Engineering**  
Consulting Electrical Engineers  
1301 Third Avenue, Suite 200  
San Diego, CA 92101  
E-MAIL: fba@fbaengineering.net  
FBA # 505.001

**COURT OF APPEAL  
FOURTH APPELLATE DISTRICT  
DIVISION THREE  
SANTA ANA, CA**



02-09-07 50% CD SUBMITTAL  
ISSUES:

PROJECT NO:  
FILE NAME:  
DRAWN BY: CHECKED BY:  
PLOT DATE:  
2-08-07  
TITLE:

**SECOND FLOOR  
POWER & SIGNAL  
PLAN**

DRAWING NO:

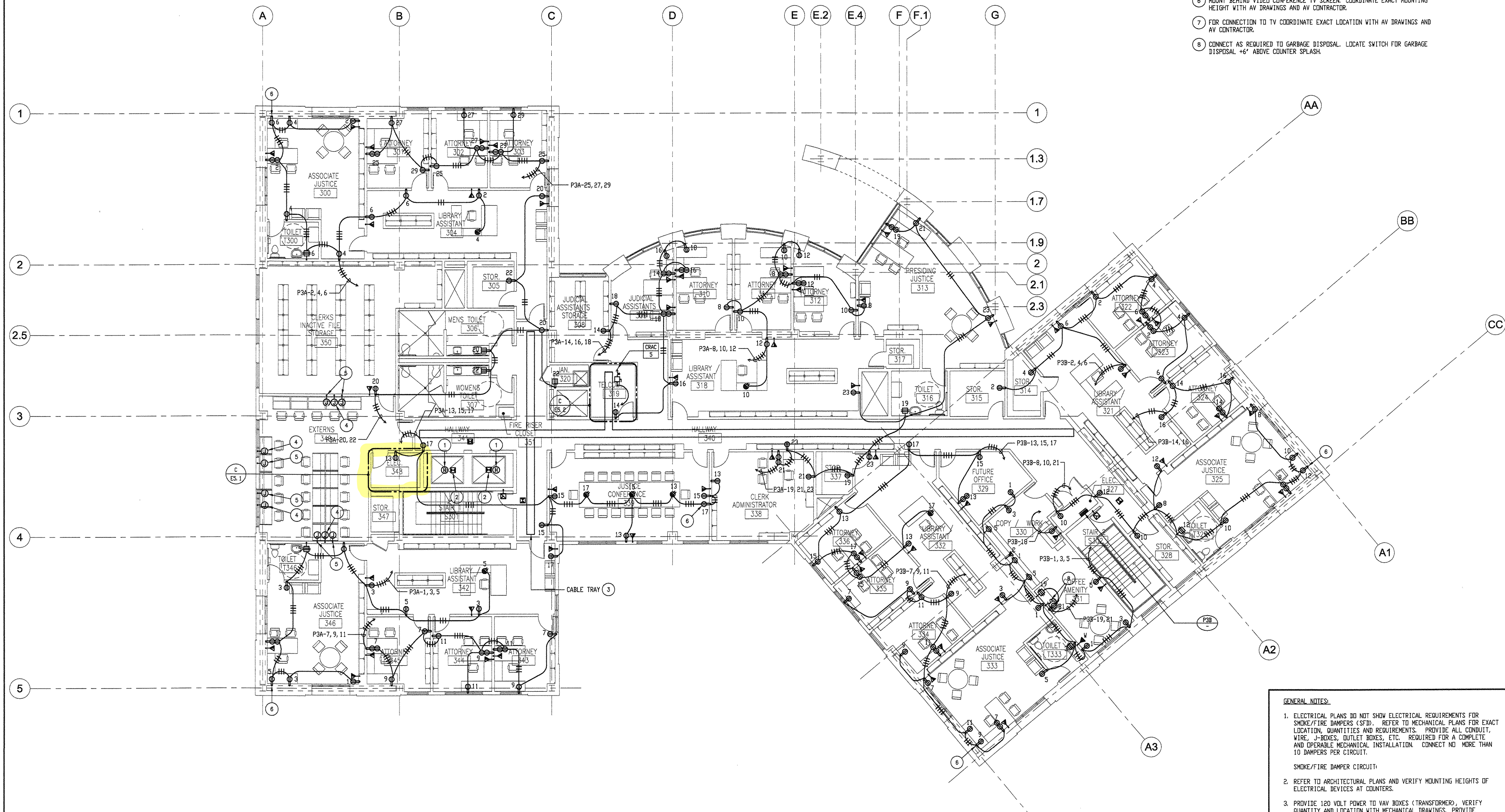
**E3.2**

**SECOND FLOOR POWER AND SIGNAL PLAN**

SCALE  
1/8" = 1'-0" A



ALL IDEAS, DESIGN ARRANGEMENTS AND PLANS INDICATED OR REPRESENTED BY THIS DRAWING ARE OWNED BY, AND THE PROPERTY OF CARRIER JOHNSON AND WERE CREATED, EVOLVED AND DEVELOPED FOR USE ON, AND IN CONNECTION WITH THIS PROJECT. NONE OF SUCH IDEAS, DESIGN ARRANGEMENTS, OR PLANS SHALL BE USED BY, OR DISCLOSED TO ANY PERSON, FIRM, OR CORPORATION FOR ANY PURPOSE WHATSOEVER WITHOUT THE WRITTEN PERMISSION OF CARRIER JOHNSON. FILING THESE DRAWINGS OR SPECIFICATIONS WITH ANY PUBLIC AGENCY IS NOT A PUBLICATION OF SAME. NO COPYING, REPRODUCTION OR USE THEREOF IS PERMISSIBLE WITHOUT THE CONSENT OF CARRIER JOHNSON.



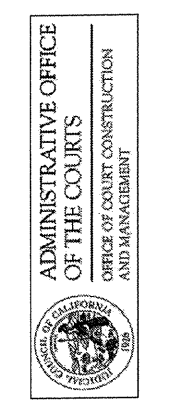
- PLAN NOTES**
- HEAT DETECTOR LOCATED IN ELEVATOR SHAFT. CONNECT TO FIRE ALARM SYSTEM AND TO SHUNT TRIP CIRCUIT BREAKER TO SHUT-OFF POWER TO ELEVATOR WHEN DETECTOR IS ACTIVATED. PROVIDE ACCESS FROM OUTSIDE SHAFT TO SERVICE DETECTOR.
  - SMOKE DETECTOR LOCATED IN ELEVATOR SHAFT FOR ELEVATOR RECALL. PROVIDE ACCESS TO DETECTOR FROM OUTSIDE SHAFT.
  - CENTER SPINE TYPE CABLE TRAY, 18" WIDE X 3" DEEP LOAD CAPACITY WITH RINGS 6" ON CENTER. MAINTAIN MINIMUM 24" ACCESS TO ONE SIDE OF TRAY AND 12" ACCESS ABOVE TRAY. TELECOMMUNICATION CABLING SHALL RUN ON ONE SIDE OF TRAY. SECURITY CABLING SHALL RUN ON OPPOSITE SIDE OF TRAY.
  - FOR POWER CONNECTION TO RECEPTACLES MOUNTED IN CARRELS.
  - FOR TELECOMMUNICATION CONNECTION TO OUTLETS IN CARRELS. PROVIDE 1 1/4" CONDUIT STUB UP.
  - MOUNT BEHIND VIDEO CONFERENCE TV SCREEN. COORDINATE EXACT MOUNTING HEIGHT WITH AV DRAWINGS AND AV CONTRACTOR.
  - FOR CONNECTION TO TV COORDINATE EXACT LOCATION WITH AV DRAWINGS AND AV CONTRACTOR.
  - CONNECT AS REQUIRED TO GARBAGE DISPOSAL. LOCATE SWITCH FOR GARBAGE DISPOSAL +6" ABOVE COUNTER SPLASH.

- GENERAL NOTES:**
- ELECTRICAL PLANS DO NOT SHOW ELECTRICAL REQUIREMENTS FOR SMOKE/FIRE DAMPERS (STD). REFER TO MECHANICAL PLANS FOR EXACT LOCATION, QUANTITIES AND REQUIREMENTS. PROVIDE ALL CONDUIT, WIRE, J-BOXES, OUTLET BOXES, ETC. REQUIRED FOR A COMPLETE AND OPERABLE MECHANICAL INSTALLATION. CONNECT NO MORE THAN 10 DAMPERS PER CIRCUIT.  
SMOKE/FIRE DAMPER CIRCUIT:
  - REFER TO ARCHITECTURAL PLANS AND VERIFY MOUNTING HEIGHTS OF ELECTRICAL DEVICES AT COUNTERS.
  - PROVIDE 120 VOLT POWER TO VAV BOXES (TRANSFORMER). VERIFY QUANTITY AND LOCATION WITH MECHANICAL DRAWINGS. PROVIDE CONDUIT, WIRING AND DISCONNECT SWITCH AT EACH VAV BOX. CONNECT MAXIMUM OF TEN (10) VAV BOXES PER CIRCUIT. CONNECT VAV BOXES TO CIRCUITS AS LISTED BELOW.
- THIRD FLOOR:

**carrierjohnson**  
architecture for urban environments  
1301 third avenue, san diego ca 92101  
phone 619.239.2353 | fax 619.239.6227

**FBA Engineering**  
1400 La Jolla Village Drive, Suite 200  
San Diego, CA 92161  
Phone: 619.434.2222  
Fax: 619.434.2222  
EMAIL: fba@fbaengineering.net  
FBA # 605.001

**COURT OF APPEAL  
FOURTH APPELLATE DISTRICT  
DIVISION THREE  
SANTA ANA, CA**



02-09-07 50% CD SUBMITTAL  
ISSUES:

PROJECT NO:  
FILENAME:  
E3\_3\_505001  
DRAWN BY: CHECKED BY:  
PLOT DATE:  
2-08-07  
TITLE:

**THIRD FLOOR  
POWER & SIGNAL  
PLAN**

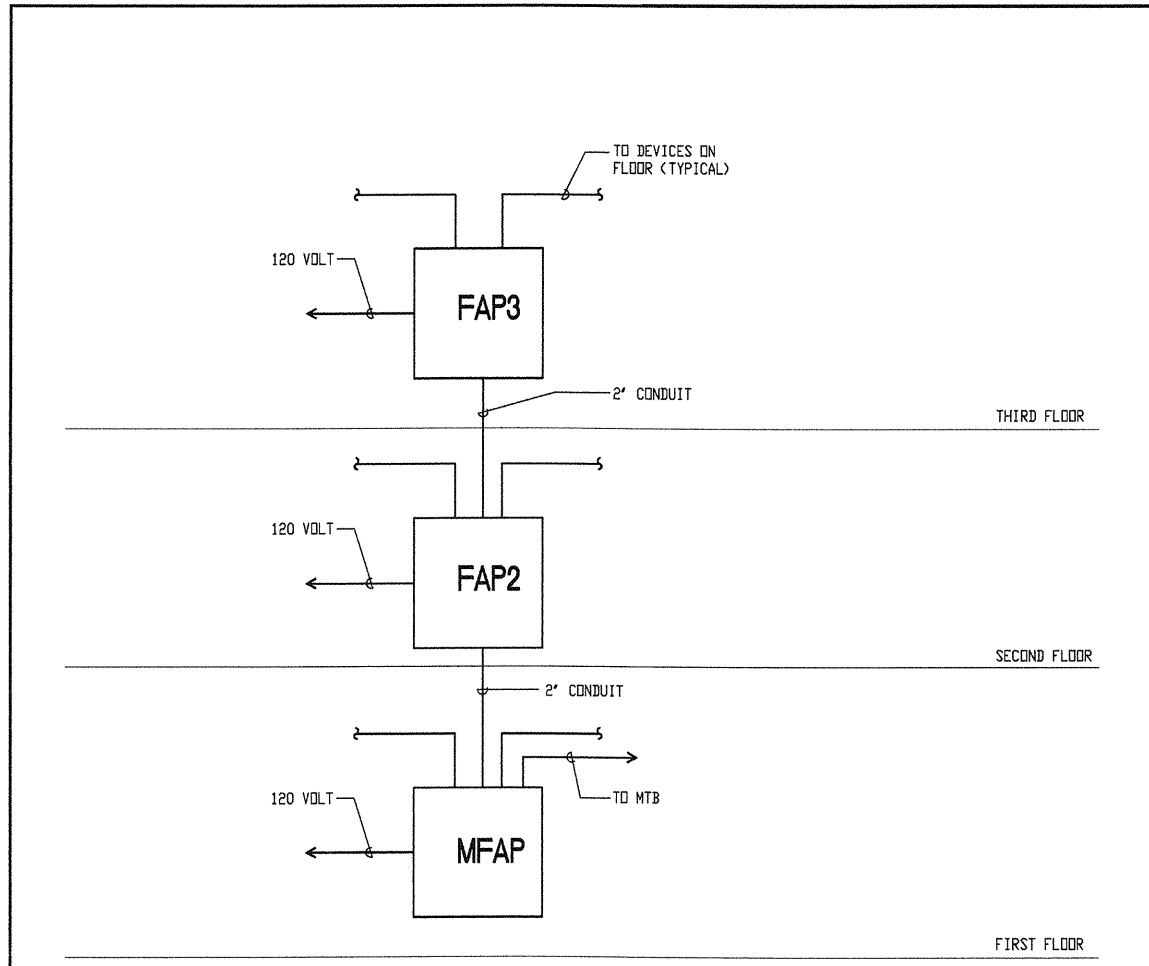
DRAWING NO:

**E3.3**

**THIRD FLOOR POWER AND SIGNAL PLAN**

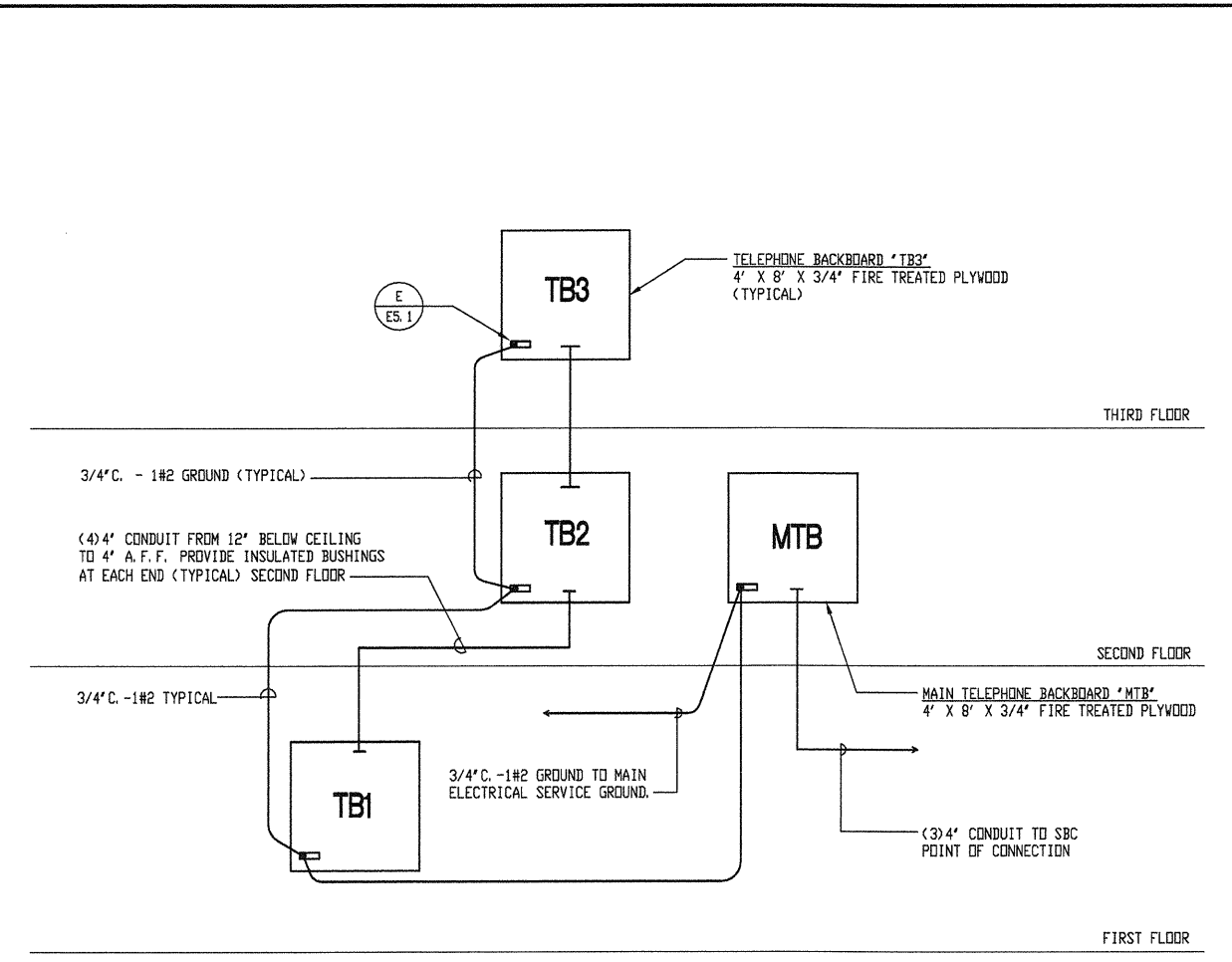
SCALE  
1/8" = 1'-0" A

ALL IDEAS, DESIGN, ARRANGEMENTS AND PLANS INDICATED OR REPRESENTED BY THIS DRAWING ARE OWNED BY, AND THE PROPERTY OF CARRIER JOHNSON AND WERE CREATED, EVOLVED AND DEVELOPED FOR USE ON, AND IN CONNECTION WITH THIS PROJECT. NONE OF SUCH IDEAS, DESIGN, ARRANGEMENTS, OR PLANS SHALL BE USED BY, OR DISCLOSED TO ANY PERSON, FIRM, OR CORPORATION FOR ANY PURPOSE WITHOUT THE WRITTEN PERMISSION OF CARRIER JOHNSON. FILING THESE DRAWINGS OR SPECIFICATIONS WITH ANY PUBLIC AGENCY IS NOT A PUBLICATION OF SAME. NO COPYING, REPRODUCTION OR USE THEREOF IS PERMISSIBLE WITHOUT THE CONSENT OF CARRIER JOHNSON.



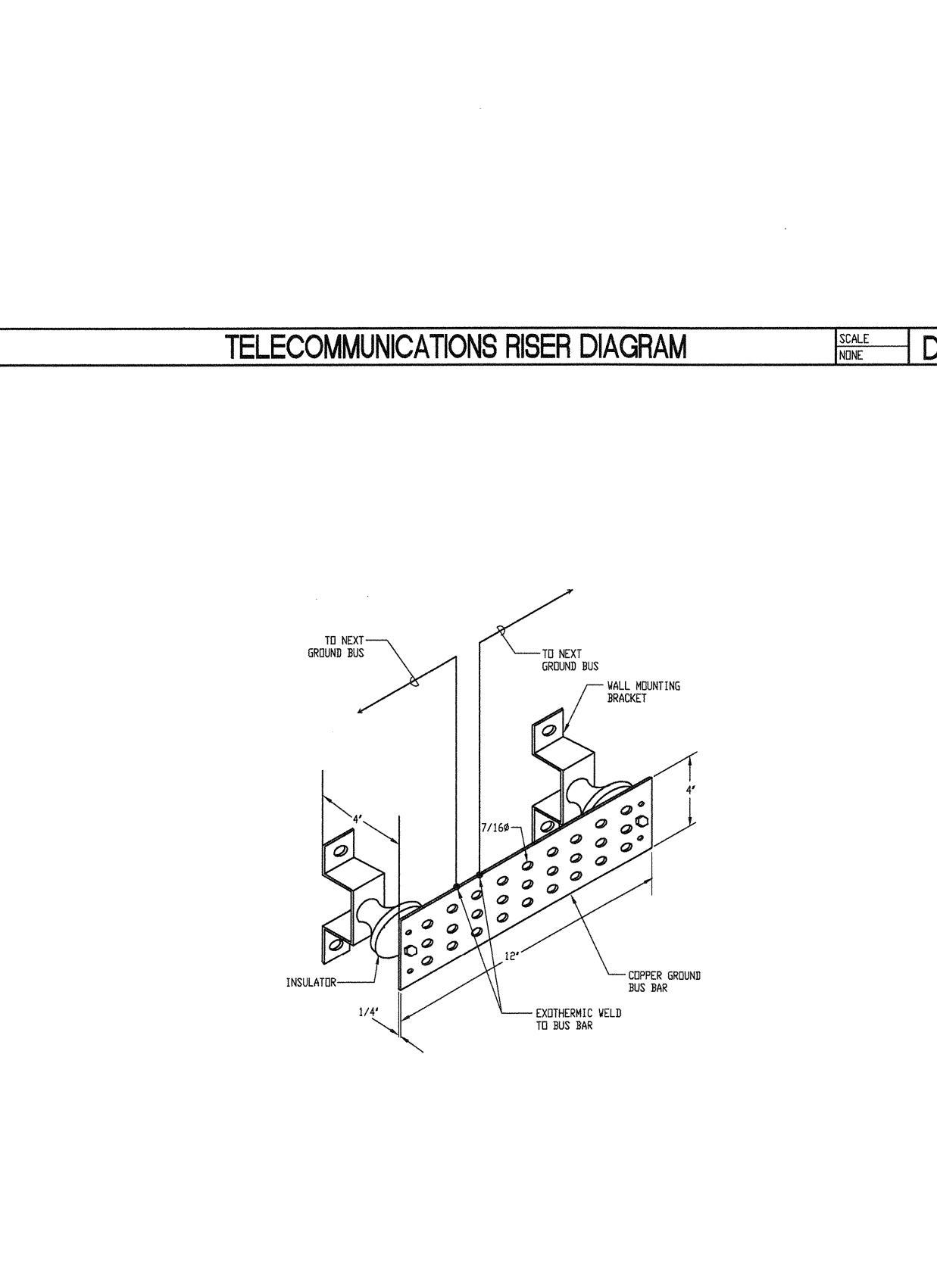
FIRE ALARM RISER DIAGRAM

SCALE: NONE  
F



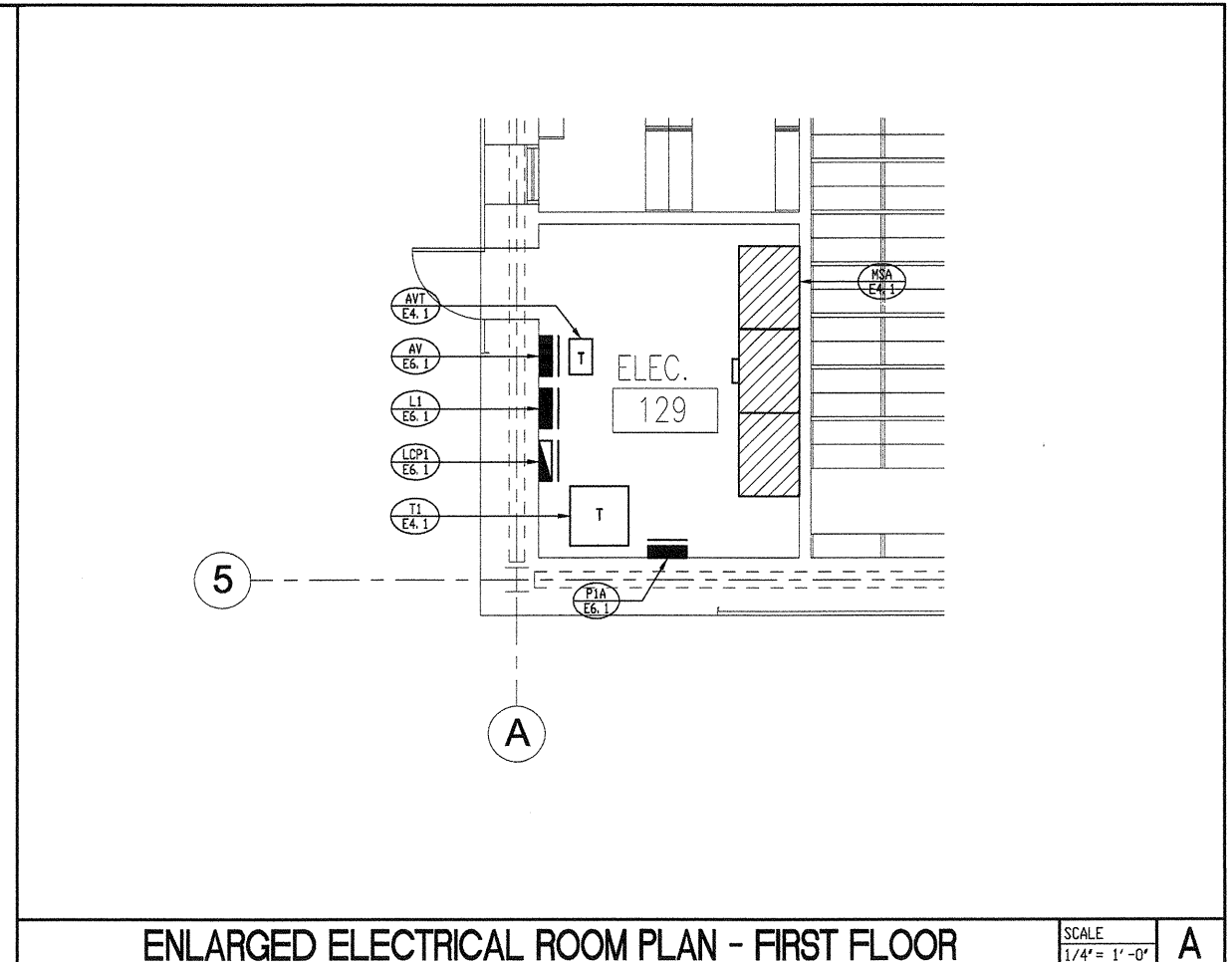
TELECOMMUNICATIONS RISER DIAGRAM

SCALE: NONE  
D



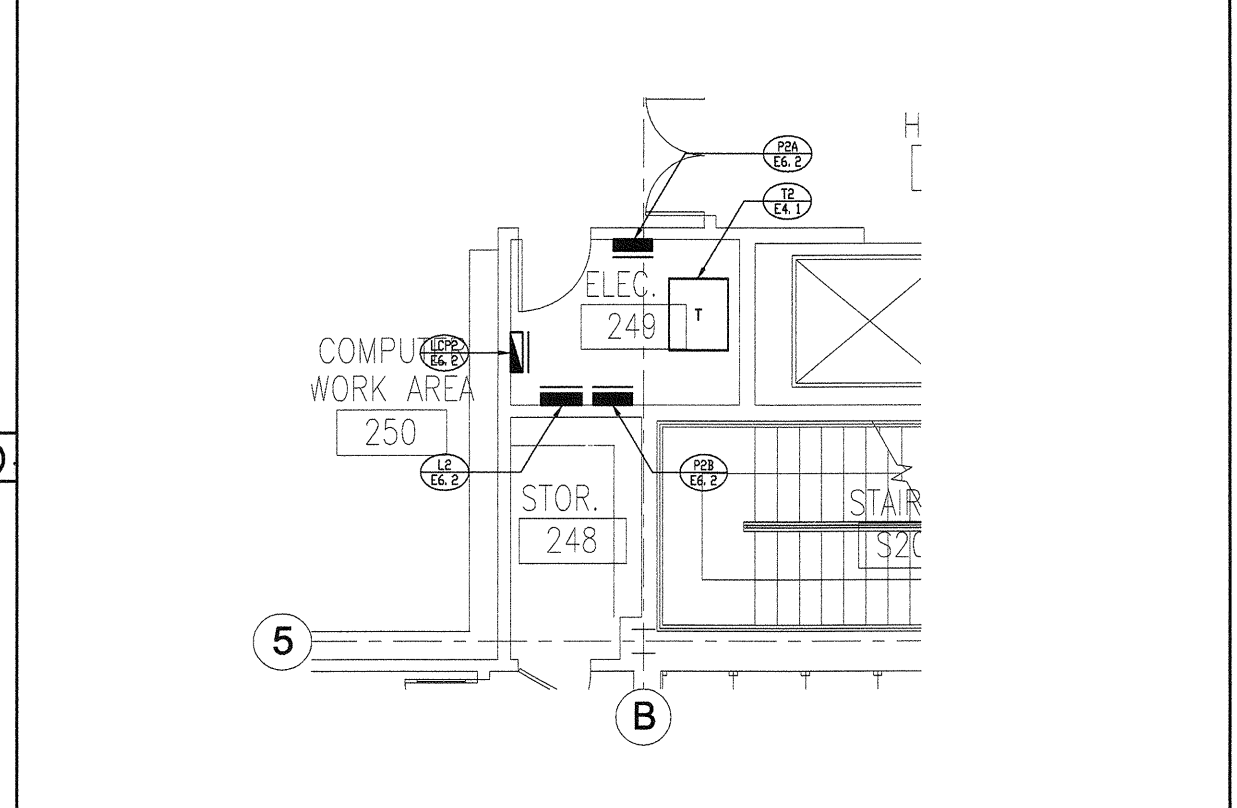
TELEPHONE BACKBOARD GROUND BUS DETAIL

SCALE: NONE  
E



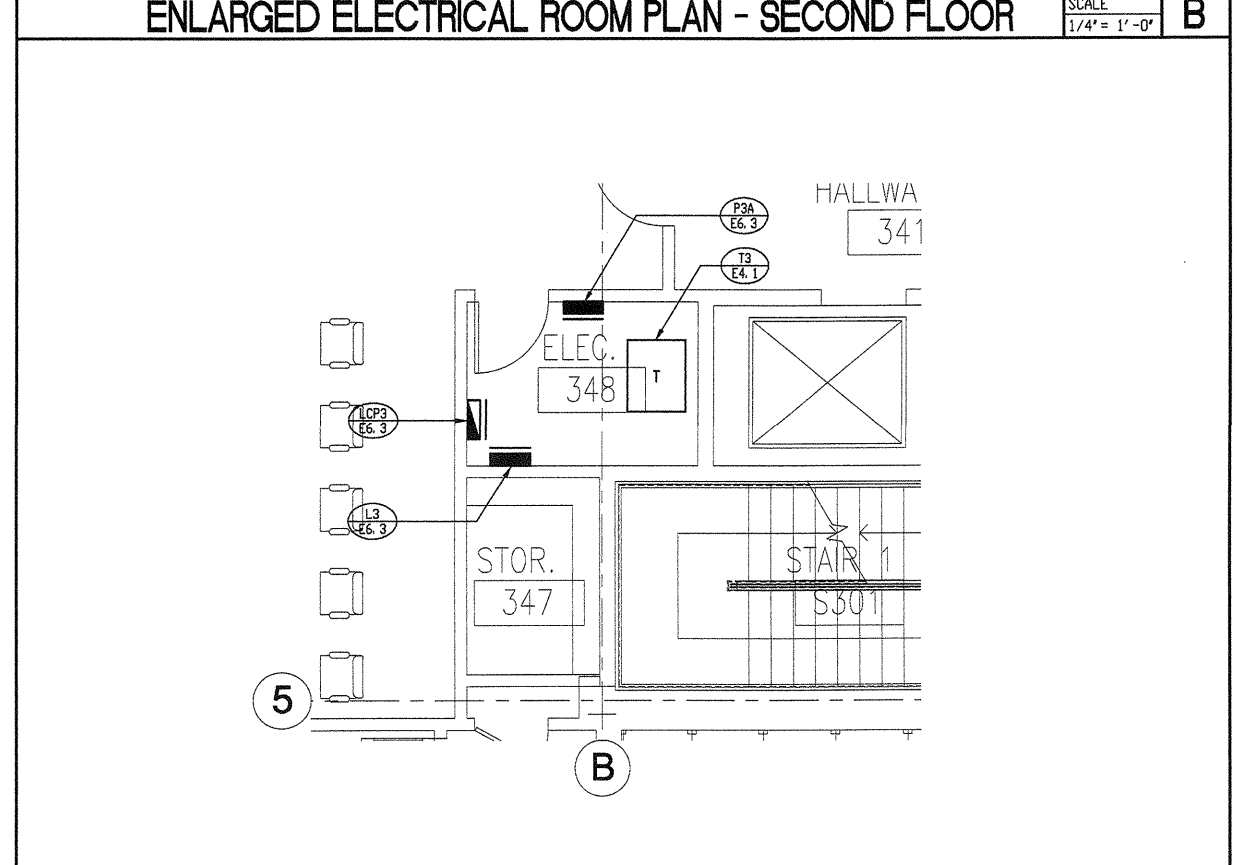
ENLARGED ELECTRICAL ROOM PLAN - FIRST FLOOR

SCALE: 1/4" = 1'-0"  
A



ENLARGED ELECTRICAL ROOM PLAN - SECOND FLOOR

SCALE: 1/4" = 1'-0"  
B



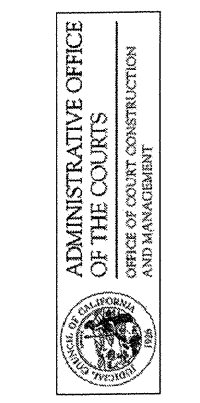
ENLARGED ELECTRICAL ROOM PLAN - THIRD FLOOR

SCALE: 1/4" = 1'-0"  
C

**carrierjohnson**  
architecture for urban environments  
1301 third avenue san diego ca 92101  
phone 619.239.2953 | fax 619.239.6227



**COURT OF APPEAL  
FOURTH APPELLATE DISTRICT  
DIVISION THREE  
SANTA ANA, CA**



02-09-07 50% CD SUBMITTAL  
ISSUES:

PROJECT NO: \_\_\_\_\_  
FILENAME: E5\_1\_505001  
DRAWN BY: \_\_\_\_\_ CHECKED BY: \_\_\_\_\_  
PLOT DATE: 2-09-07  
TITLE: \_\_\_\_\_

DETAILS

DRAWING NO:

**E5.1**