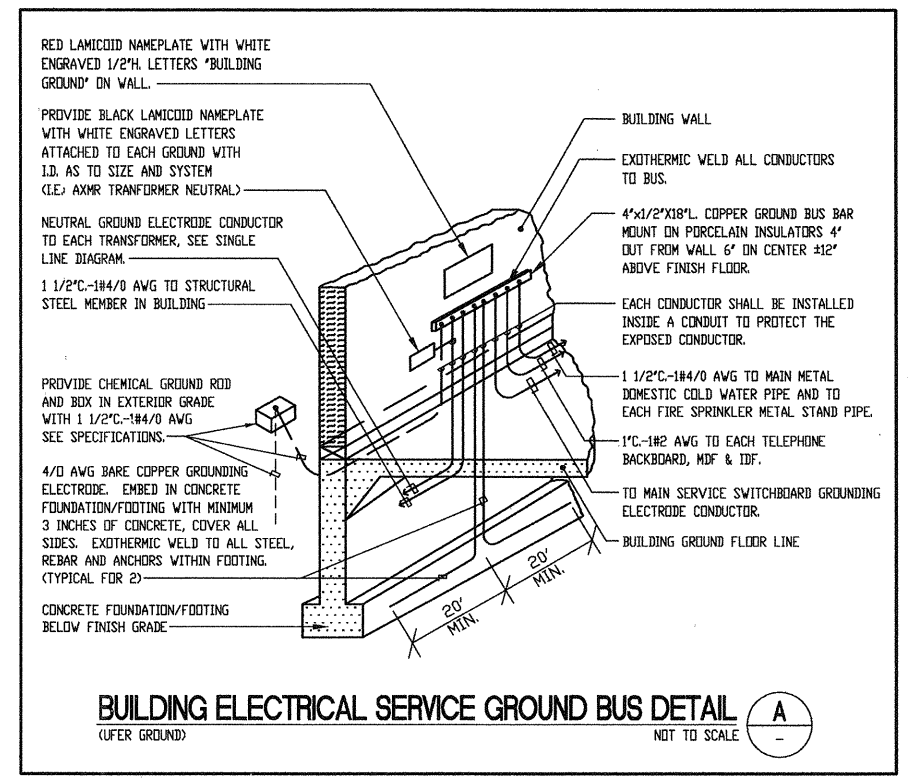


ALL RIGHTS RESERVED. NO PART OF THIS DRAWING IS TO BE REPRODUCED OR TRANSMITTED IN ANY FORM OR BY ANY MEANS, ELECTRONIC OR MECHANICAL, INCLUDING PHOTOCOPYING, RECORDING, OR BY ANY INFORMATION STORAGE AND RETRIEVAL SYSTEM, WITHOUT THE WRITTEN PERMISSION OF CARRIER JOHNSON. DESIGN, ARRANGEMENTS AND PLANS SHALL BE USED BY, OR DISCLOSED TO ANY PERSON, FIRM, OR CORPORATION FOR ANY PURPOSE WHATSOEVER WITHOUT THE WRITTEN PERMISSION OF CARRIER JOHNSON.

FEEDER SCHEDULE					
FEEDER TYPE	CIRCUIT SIZE	COPPER CONDUCTORS (IN 600V AND)		EQUIPMENT GROUND WIRE SIZE	
		QUANTITY	PHASE/NEUTRAL	QUANTITY	CONDUIT
QTY	SIZE	SIZE	SIZE	SIZE	SIZE
F20	1	3/4"	4	12	12
F30	1	3/4"	4	10	10
F40	1	1"	4	8	10
F50	1	1 1/4"	4	6	10
F60	1	1 1/2"	4	4	10
F70	1	1 1/2"	4	4	8
F80	1	2"	4	2	8
F90	1	2"	4	1	6
F100	1	2"	4	1/2	6
F110	1	2"	4	1/2	6
F120	1	2"	4	1/2	6
F130	1	2"	4	1/2	6
F140	1	2"	4	1/2	6
F150	1	2"	4	1/2	6
F160	1	2"	4	1/2	6
F170	1	2"	4	1/2	6
F180	1	2"	4	1/2	6
F190	1	2"	4	1/2	6
F200	1	2"	4	1/2	6
F210	1	2"	4	1/2	6
F220	1	2"	4	1/2	6
F230	1	2"	4	1/2	6
F240	1	2"	4	1/2	6
F250	1	2"	4	1/2	6
F260	1	2"	4	1/2	6
F270	1	2"	4	1/2	6
F280	1	2"	4	1/2	6
F290	1	2"	4	1/2	6
F300	1	2"	4	1/2	6
F310	1	2"	4	1/2	6
F320	1	2"	4	1/2	6
F330	1	2"	4	1/2	6
F340	1	2"	4	1/2	6
F350	1	2"	4	1/2	6
F360	1	2"	4	1/2	6
F370	1	2"	4	1/2	6
F380	1	2"	4	1/2	6
F390	1	2"	4	1/2	6
F400	1	2"	4	1/2	6
F410	1	2"	4	1/2	6
F420	1	2"	4	1/2	6
F430	1	2"	4	1/2	6
F440	1	2"	4	1/2	6
F450	1	2"	4	1/2	6
F460	1	2"	4	1/2	6
F470	1	2"	4	1/2	6
F480	1	2"	4	1/2	6
F490	1	2"	4	1/2	6
F500	1	2"	4	1/2	6
F510	1	2"	4	1/2	6
F520	1	2"	4	1/2	6
F530	1	2"	4	1/2	6
F540	1	2"	4	1/2	6
F550	1	2"	4	1/2	6
F560	1	2"	4	1/2	6
F570	1	2"	4	1/2	6
F580	1	2"	4	1/2	6
F590	1	2"	4	1/2	6
F600	1	2"	4	1/2	6
F610	1	2"	4	1/2	6
F620	1	2"	4	1/2	6
F630	1	2"	4	1/2	6
F640	1	2"	4	1/2	6
F650	1	2"	4	1/2	6
F660	1	2"	4	1/2	6
F670	1	2"	4	1/2	6
F680	1	2"	4	1/2	6
F690	1	2"	4	1/2	6
F700	1	2"	4	1/2	6
F710	1	2"	4	1/2	6
F720	1	2"	4	1/2	6
F730	1	2"	4	1/2	6
F740	1	2"	4	1/2	6
F750	1	2"	4	1/2	6
F760	1	2"	4	1/2	6
F770	1	2"	4	1/2	6
F780	1	2"	4	1/2	6
F790	1	2"	4	1/2	6
F800	1	2"	4	1/2	6
F810	1	2"	4	1/2	6
F820	1	2"	4	1/2	6
F830	1	2"	4	1/2	6
F840	1	2"	4	1/2	6
F850	1	2"	4	1/2	6
F860	1	2"	4	1/2	6
F870	1	2"	4	1/2	6
F880	1	2"	4	1/2	6
F890	1	2"	4	1/2	6
F900	1	2"	4	1/2	6
F910	1	2"	4	1/2	6
F920	1	2"	4	1/2	6
F930	1	2"	4	1/2	6
F940	1	2"	4	1/2	6
F950	1	2"	4	1/2	6
F960	1	2"	4	1/2	6
F970	1	2"	4	1/2	6
F980	1	2"	4	1/2	6
F990	1	2"	4	1/2	6
F1000	1	2"	4	1/2	6



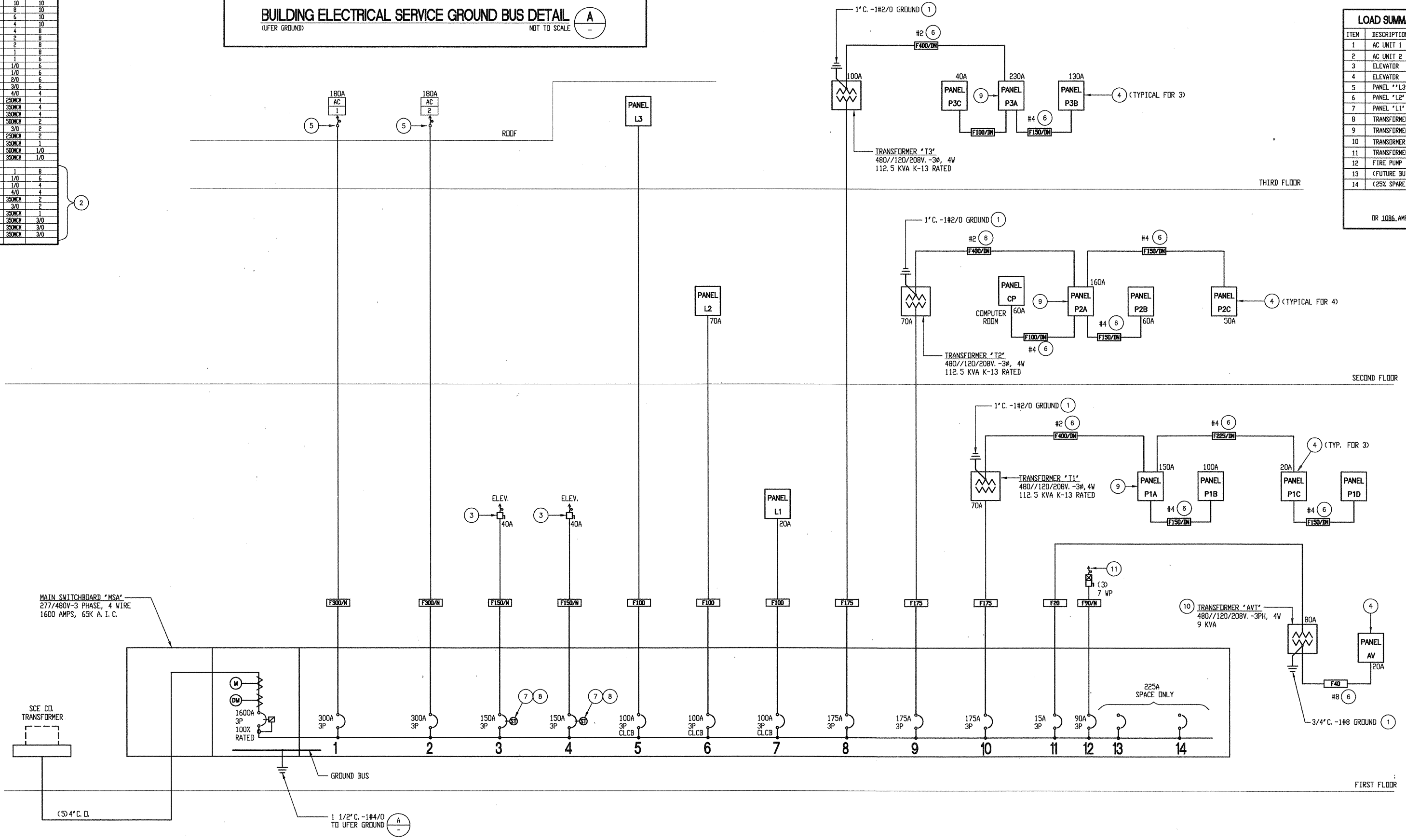
- SINGLE LINE DIAGRAM GENERAL NOTES:**
1. THE INTERRUPTING CAPACITY OF THE CIRCUIT BREAKERS IN 120/208 VOLT PANELBOARDS SHALL BE 10,000 A. I. C. TYPICAL.
 2. THE INTERRUPTING CAPACITY OF THE CIRCUIT BREAKERS IN 480/277 VOLT PANELBOARD SHALL BE 14,000 A. I. C. TYPICAL.
 3. CIRCUIT PROTECTIVE DEVICES IDENTIFIED AS "SERIES RATED" OR "CURRENT LIMITING" (I.E., CLCB-CURRENT LIMITING CIRCUIT BREAKER, CLF-CURRENT LIMITING FUSE, ETC.) SHALL BE SERIES RATED AND TESTED (UL 489 & CSA) BY THE MANUFACTURER WITH ALL EQUIPMENT AND CIRCUIT PROTECTIVE DEVICES INSTALLED DOWN STREAM OF THE IDENTIFIED SERIES RATED OR CURRENT LIMITING DEVICE FOR 65,000 A. I. C. PROVIDE NAMEPLATES ON ALL EQUIPMENT LOCATED DOWN STREAM, INCLUDING THE CLCB AND CLF DEVICES, TO COMPLY WITH N.E.C. PARAGRAPHS 110-22 AND 240-83 "CAUTION SERIES RATED SYSTEM - NEW DEVICE INSTALLATIONS AND REPLACEMENTS SHALL BE THE SAME MANUFACTURER AND MODELS".
 4. PROVIDE EQUIPMENT GROUND CONDUCTORS IN EACH ELEVATOR FEEDER. THE CONDUIT SHALL NOT BE USED AS THE SOLE GROUNDING MEANS.

- PLAN NOTES:**
1. CONNECT TO NEAREST STRUCTURAL STEEL MEMBER AND TO UFER GROUND. SEE DETAIL A.
 2. CONDUCTORS SPECIFIED INCLUDE TWO FULL SIZE NEUTRALS.
 3. SWITCH AND FUSE SIZE PER ELEVATOR MANUFACTURER'S REQUIREMENTS. PROVIDE NORMALLY OPEN AUXILIARY CONTACT FOR CONNECTION TO ELEVATOR CONTROLLER.
 4. PANELBOARD SHALL BE U.L. LISTED FOR NON LINEAR LOADS AND SHALL BE PROVIDED WITH AN ISOLATED/INSULATED GROUND BUS AS WELL AS AN EQUIPMENT GROUND BUS.
 5. DISCONNECT TO BE PROVIDED WITH AC UNIT.
 6. PROVIDE ISOLATED/INSULATED GROUND CONDUCTOR, SIZE AS INDICATED, IN ADDITION TO CONDUCTORS SPECIFIED.
 7. CONNECT SHUNT TRIP BREAKER RELAY COIL TO FIRE ALARM SYSTEM.
 8. SHUNT TRIP CIRCUIT BREAKER. CIRCUIT BREAKER TO OPEN WHEN ELEVATOR MACHINE ROOM OR ELEVATOR SHAFT HEAT DETECTOR IS ACTIVATED. PROVIDE 480 VOLT TO 120 VOLT TRANSFORMER FOR CONTROL POWER.
 9. PROVIDE SERIES RATED MAIN CIRCUIT BREAKER IN PANELBOARD RATED FOR 22,000 A. I. C.
 10. ISOLATION TYPE TRANSFORMER WITH MINIMUM 120 dB COMMON MODE ISOLATION RATIO. TRANSFORMER SHALL BE SQUARE D SHIELDED ISOLATION, MGE UPS SYSTEMS, TUPAZ 17 SERIES 3D OR EQUAL.
 11. PROVIDE CONNECTION TO 25HP, 460V, 3PH, 4 W, 1600A BUS FLOOR PUMP ROOM IN ACCORDANCE WITH EQUIPMENT MANUFACTURER'S REQUIREMENTS.

LOAD SUMMARY - MAIN SWBRD. "MSA"

ITEM	DESCRIPTION	KVA
1	AC UNIT 1	150
2	AC UNIT 2	150
3	ELEVATOR	33
4	ELEVATOR	33
5	PANEL "L1"	25
6	PANEL "L2"	11
7	PANEL "L3"	6
8	TRANSFORMER "T3"	83
9	TRANSFORMER "T2"	57
10	TRANSFORMER "T1"	57
11	TRANSFORMER "AVT"	7
12	FIRE PUMP	28
13	(FUTURE BUILDING)	75
14	(25% SPARE CAPACITY)	180
TOTAL		903

OR 1086 AMPS @ 480V, 3 PH, 4 W, 1600A BUS



SINGLE LINE DIAGRAM
SCALE: NONE

carrierjohnson
 architecture for urban environments
 1301 third avenue san diego ca 92101
 phone 619.239.2953 fax 619.239.6227

FBA Engineering
 Consulting Electrical Engineers
 3000 La Jolla Village Drive, Suite 200
 San Diego, CA 92161
 Phone: 619.444.8888 Fax: 619.444.8889
 Email: info@fbaing.com
 FBA # 306.001

COURT OF APPEAL
FOURTH APPELLATE DISTRICT
DIVISION THREE
 SANTA ANA, CA

ADMINISTRATIVE OFFICE
OF THE COURTS
 OFFICE OF COURT CONSTRUCTION
 AND MANAGEMENT

04-09-07 95% CD SUBMITTAL
 02-09-07 20% CD SUBMITTAL
 ISSUES:

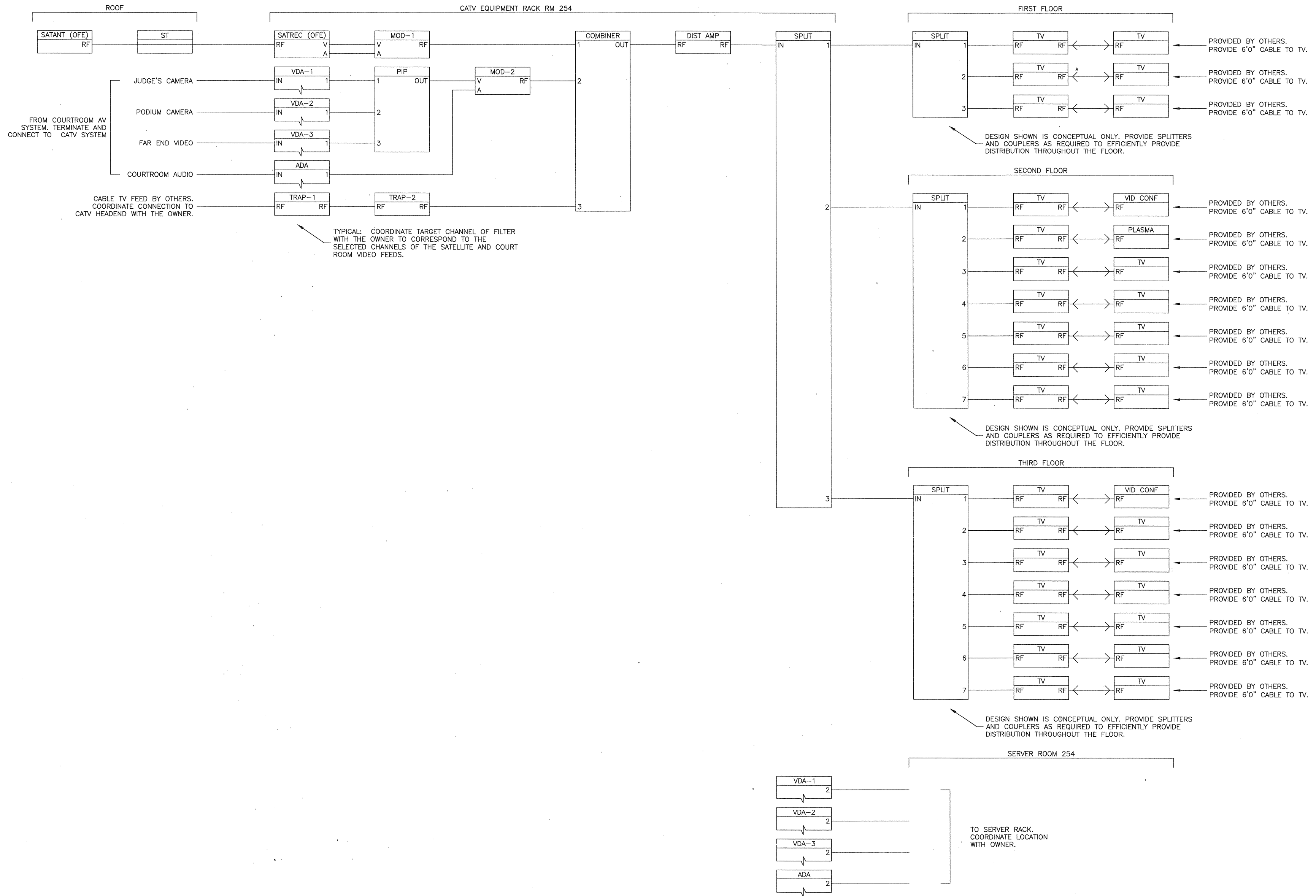
PROJECT NO:
 FILENAME:
 E4_1_505001
 DRAWN BY: CHECKED BY:
 J.N. B.Z.
 PLOT DATE:
 4-05-07
 TITLE:

SINGLE LINE
DIAGRAM

DRAWING NO:

E4.1

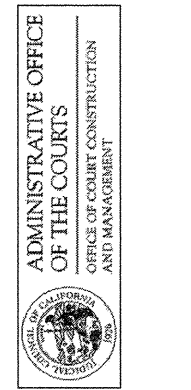
ALL IDEAS, DESIGN ARRANGEMENTS AND PLANS INDICATED OR REPRESENTED BY THIS DRAWING ARE OWNED BY, AND THE PROPERTY OF, CARRIER JOHNSON. ANY REUSE, REPRODUCTION, OR PLANS SHALL BE USED BY, OR DISCLOSED TO, ANY PERSON, FIRM, OR CORPORATION FOR ANY PURPOSE WITHOUT THE WRITTEN PERMISSION OF CARRIER JOHNSON. THIS DRAWING IS SPECIFICALLY FOR THE PROJECT AND IS NOT TO BE REPRODUCED OR USED FOR ANY OTHER PROJECT WITHOUT THE WRITTEN PERMISSION OF CARRIER JOHNSON.



carrierjohnson
architecture for urban environments
1301 third avenue san diego ca 92101
phone 619.239.2353 | fax 619.239.6227

VSA
Associates
Acoustics
Audio Visual
Noise
Vibration
Consultants
1225 Lumberl Rd. Whittier, CA 90606
Tel: 909.695.2468 Fax: 909.695.2339

**COURT OF APPEAL
FOURTH APPELLATE DISTRICT
DIVISION THREE
SANTA ANA, CA**



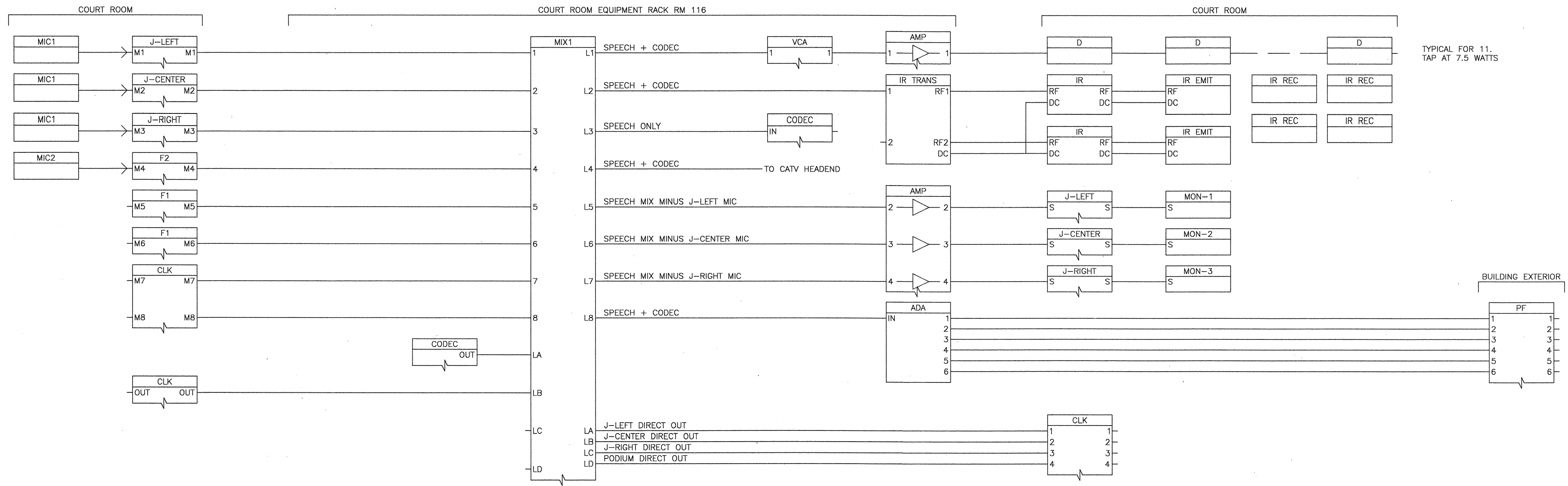
04-09-07 95% CD SUBMITTAL
02-09-07 50% CD SUBMITTAL
ISSUES:

PROJECT NO.:
AV4.0
FILENAME:
DRAWN BY: TSH CHECKED BY: TSH
PLOT DATE:

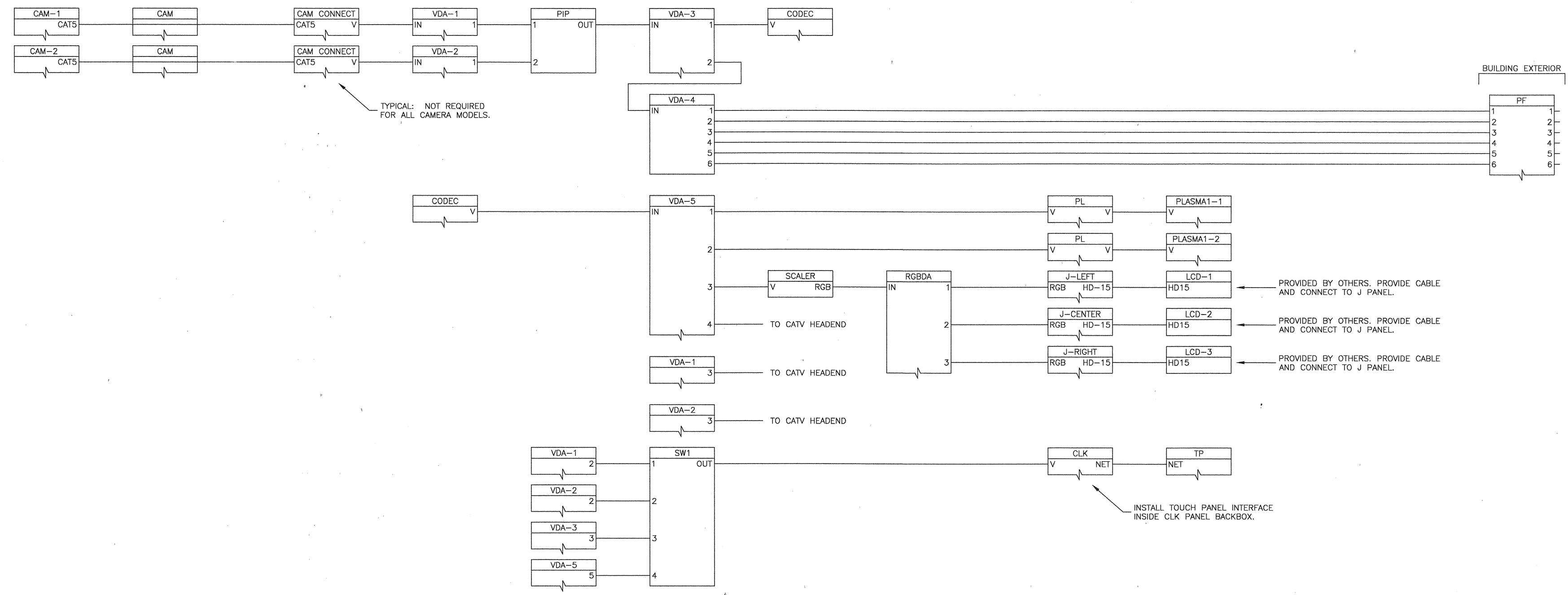
TITLE:
**CATV SYSTEM
SINGLE LINE
DIAGRAM**

DRAWING NO.:
AV4.0

ALL IDEAS, DESIGN, WORKSHEETS AND PLANS INDICATED OR REFERENCED BY THIS DRAWING ARE OWNED BY AND THE PROPERTY OF CARRIER JOHNSON AND THESE DESIGNS, EVALUATIONS AND OTHER WORK SHALL BE USED BY OR DISCLOSED TO ANY PERSON, FIRM OR CORPORATION FOR ANY PURPOSE WITHOUT THE WRITTEN PERMISSION OF CARRIER JOHNSON. PLANS THESE DRAWINGS OR SPECIFICATIONS WITH ANY PUBLIC AGENCY IS NOT A VIOLATION OF STATE OR FEDERAL LAWS. REPRODUCTION OR USE THEREOF IS PERMISSIBLE WITHOUT THE CONSENT OF CARRIER JOHNSON.



TYPICAL FOR 11.
TAP AT 7.5 WATTS



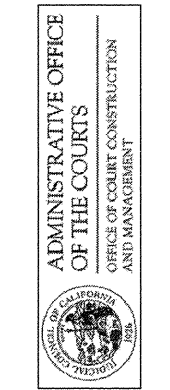
TYPICAL: NOT REQUIRED FOR ALL CAMERA MODELS.

PROVIDED BY OTHERS. PROVIDE CABLE AND CONNECT TO J PANEL.
PROVIDED BY OTHERS. PROVIDE CABLE AND CONNECT TO J PANEL.
PROVIDED BY OTHERS. PROVIDE CABLE AND CONNECT TO J PANEL.

carrierjohnson
architecture for urban environments
1301 third avenue san diego ca 92101
phone 619.239.2353 | fax 619.239.6227

VSA
Associates
Acoustics
Audio Visual
Noise
Vibration
Consultants
1520 Lumber 1 Rd. Walnut, CA 95090
Tel: 925.939.3493 Fax: 925.939.3299

**COURT OF APPEAL
FOURTH APPELLATE DISTRICT
DIVISION THREE
SANTA ANA, CA**



04-09-07 95% CD SUBMITTAL
02-09-07 50% CD SUBMITTAL
ISSUES:

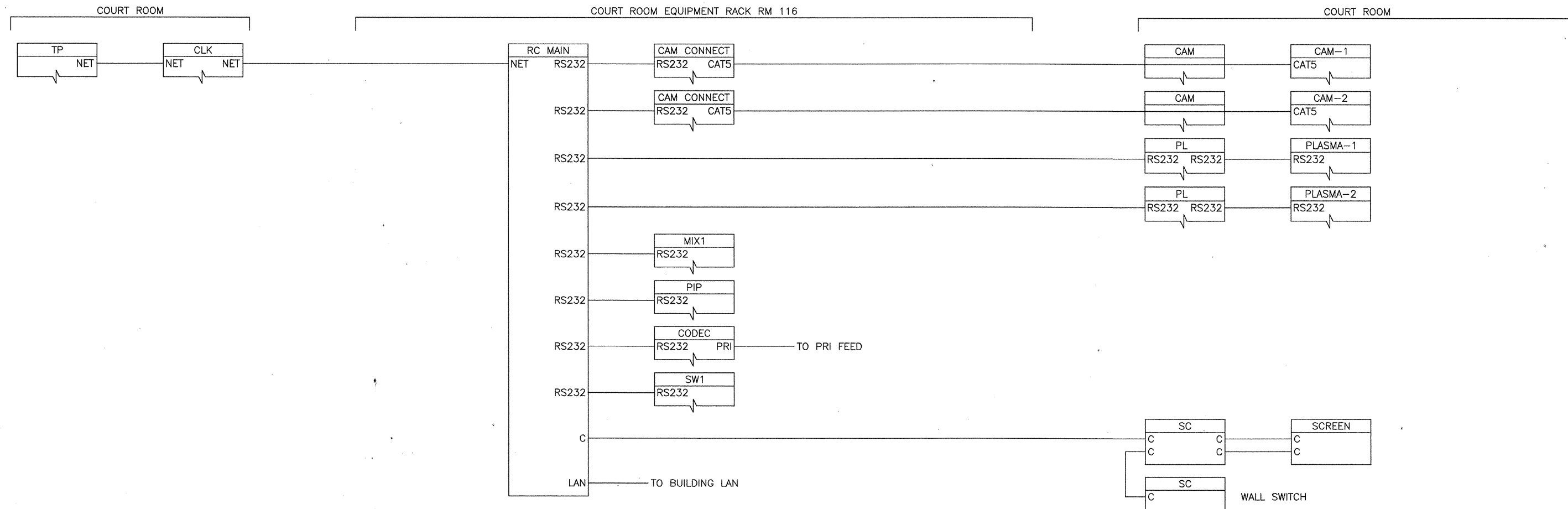
PROJECT NO:
AV4.0
FILENAME:
DRAWN BY: TSH
CHECKED BY: TSH
PLOT DATE:

TITLE:
**COURTROOM
AUDIO-VISUAL
SINGLE LINE
DIAGRAM**

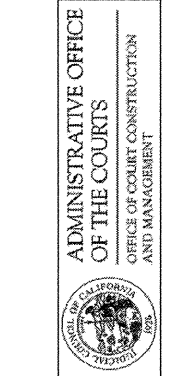
DRAWING NO:

AV4.1

ALL REVISIONS, AMENDMENTS, OR PLANS INDICATED OR REPRESENTED BY THIS DRAWING ARE OWNED BY AND THE PROPERTY OF CARRIER JOHNSON AND SHALL BE USED ONLY IN CONNECTION WITH THIS PROJECT. NO PART OF THIS DRAWING, OR ANY REVISIONS, AMENDMENTS, OR PLANS SHALL BE USED BY, OR DISCLOSED TO ANY PERSON, FIRM, OR CORPORATION FOR ANY PURPOSE WITHOUT THE WRITTEN PERMISSION OF CARRIER JOHNSON. FILING THESE DRAWINGS OR SPECIFICATIONS WITH ANY PUBLIC AGENCY IS NOT A PUBLICATION OF SAME. NO COPYING, REPRODUCTION OR USE THEREOF IS PERMISSIBLE WITHOUT THE CONSENT OF CARRIER JOHNSON.



**COURT OF APPEAL
FOURTH APPELLATE DISTRICT
DIVISION THREE
SANTA ANA, CA**



04-09-07 85% CD SUBMITTAL
02-09-07 50% CD SUBMITTAL
ISSUES:

PROJECT NO:
AV4.0
FILENAME:
DRAWN BY: TSH CHECKED BY: TSH
PLOT DATE:
TITLE:
**COURTROOM
AUDIO-VISUAL
CONTROL SINGLE
LINE DIAGRAM**

DRAWING NO:

AV4.2

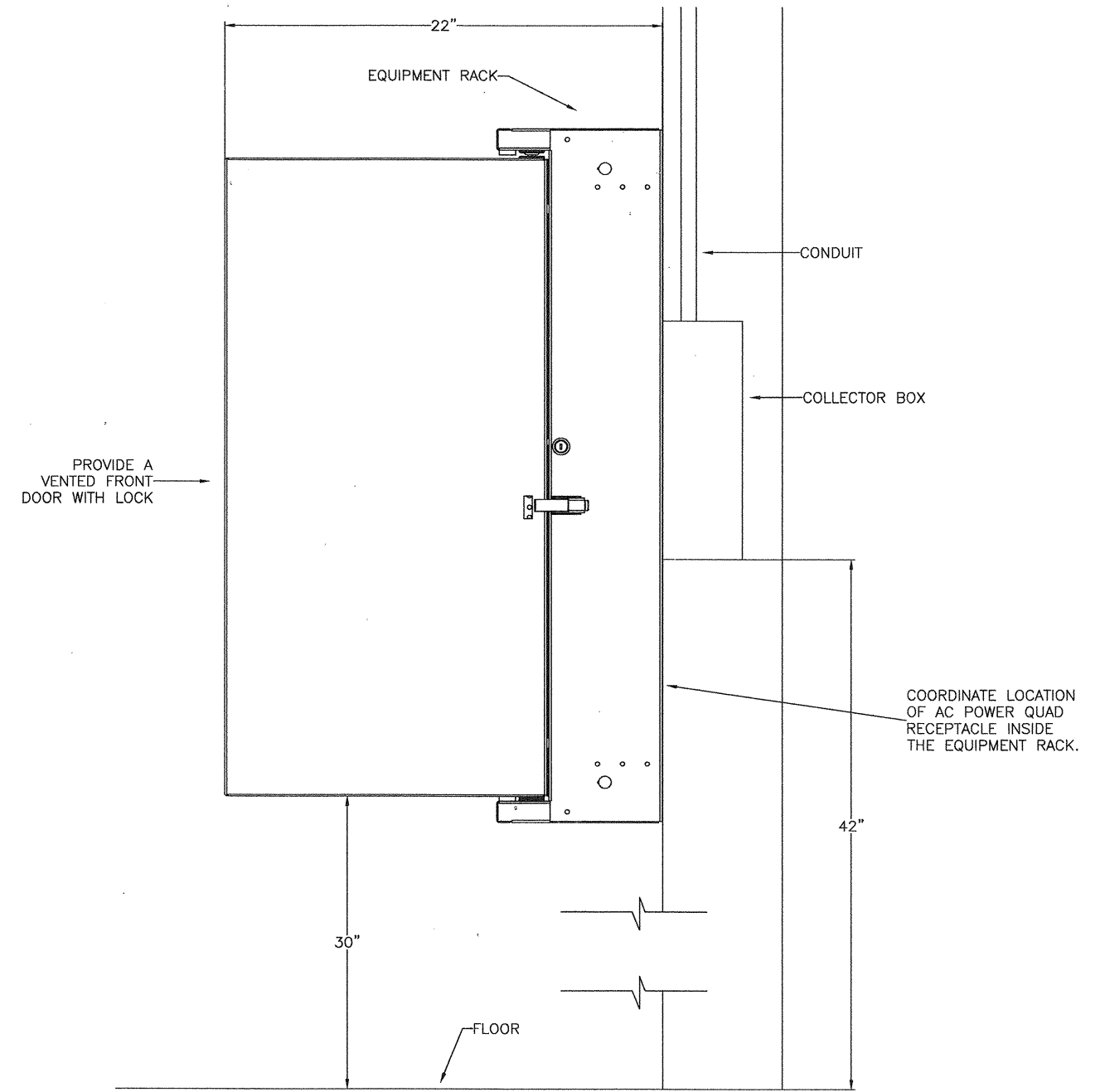
VSA
Associates
Acoustics
Audio Visual
Noise
Vibration
Consultants
12021 Lumber 1 Rd. Whittier, CA 90606
Tel: 562-408-2468 Fax: 562-499-2339

carrierjohnson
architecture for urban environments
1301 third avenue san diego ca 92101
phone 619.239.2353 | fax 619.239.6227

ALL DEAS, DESIGN, ARRANGEMENTS AND PLANS INDICATED OR REPRESENTED BY THIS DRAWING ARE THE PROPERTY OF CARRIER JOHNSON AND WERE CREATED, DESIGNED AND DEVELOPED FOR USE ON AND IN CONNECTION WITH THIS PROJECT. NONE OF SUCH DEAS, DESIGN, ARRANGEMENTS, OR PLANS SHALL BE USED BY, OR DISCLOSED TO ANY PERSON, FIRM, OR CORPORATION FOR ANY PURPOSE WHATSOEVER WITHOUT THE WRITTEN PERMISSION OF CARRIER JOHNSON. FILING THESE DRAWINGS OR SPECIFICATIONS WITH ANY PUBLIC AGENCY IS NOT A PUBLICATION OF SAME. NO COPYING, REPRODUCTION OR USE THEREOF IS PERMISSIBLE WITHOUT THE CONSENT OF CARRIER JOHNSON.

VENT		
DIST AMP		
VENT		
COMBINER		
TRAP-1		
TRAP-2		
MOD-1		
SAT REC		
PROVIDE RACK SHELF		
BLANK		
MOD-2		
PIP		
VDA-1	VDA-2	VDA-3
ADA	BLANK	BLANK
BLANK		

ELEVATION

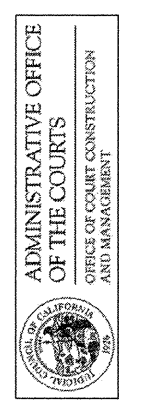


1 CATV EQUIPMENT RACK DETAIL
SCALE: 3" = 1'0"

carrierjohnson
architecture for urban environments
1301 third avenue san diego ca 92101
phone 619.239.2353 | fax 619.239.6227

VSA
Associates
Acoustics
Audio Visual
Noise
Vision
Consultants
1225 Lumber 1 Rd Whittier, CA 90608
Tel: 562-698-3468 Fax: 562-698-2289

**COURT OF APPEAL
FOURTH APPELLATE DISTRICT
DIVISION THREE
SANTA ANA, CA**



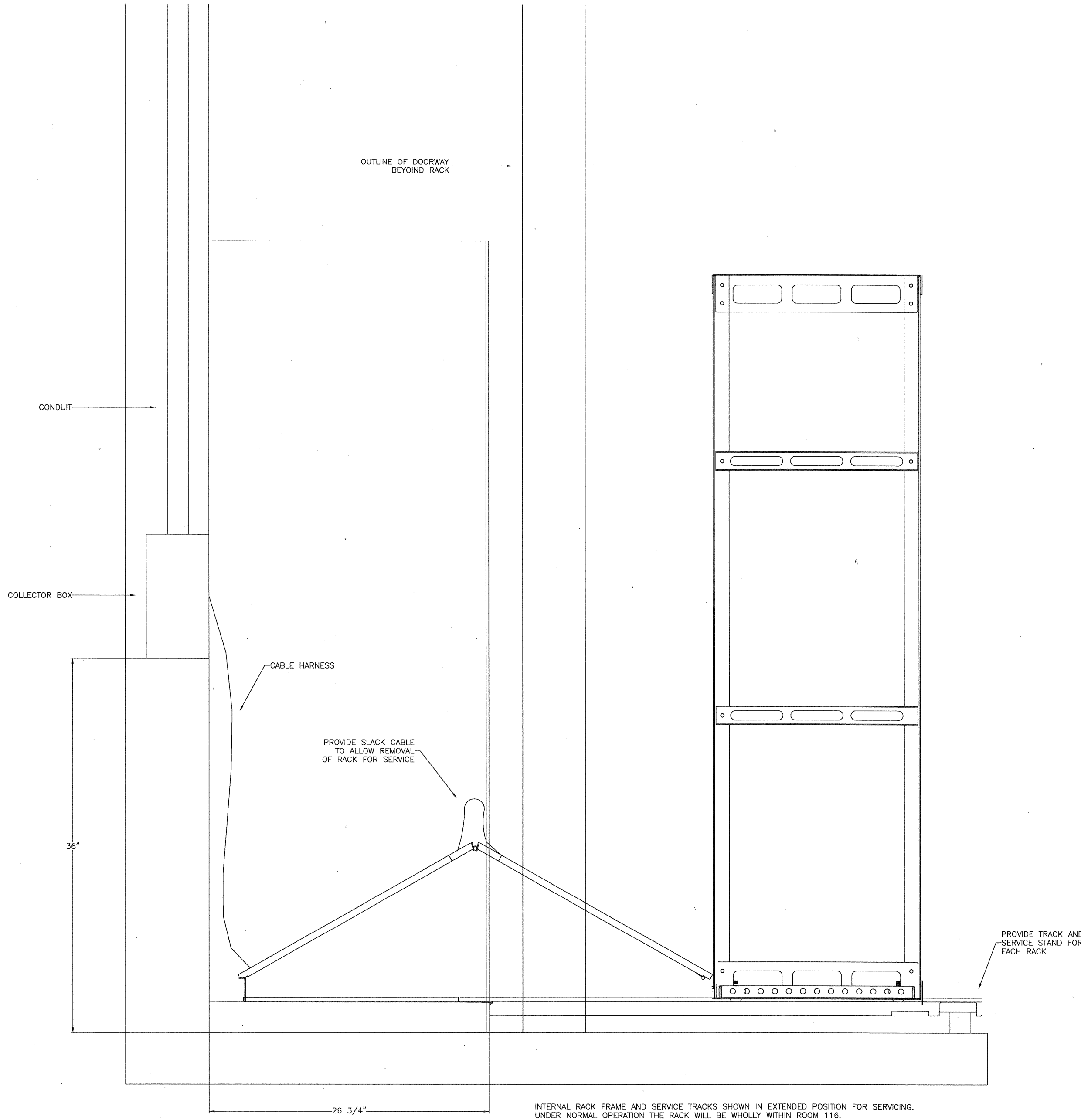
04-09-07 85% CD SUBMITTAL
02-08-07 50% CD SUBMITTAL
ISSUES:

PROJECT NO:
AV6.0
FILENAME:
DRAWN BY: TSH
CHECKED BY: TSH
PLOT DATE:

TITLE:
CATV SYSTEM
AUDIO-VISUAL
RACK DETAIL

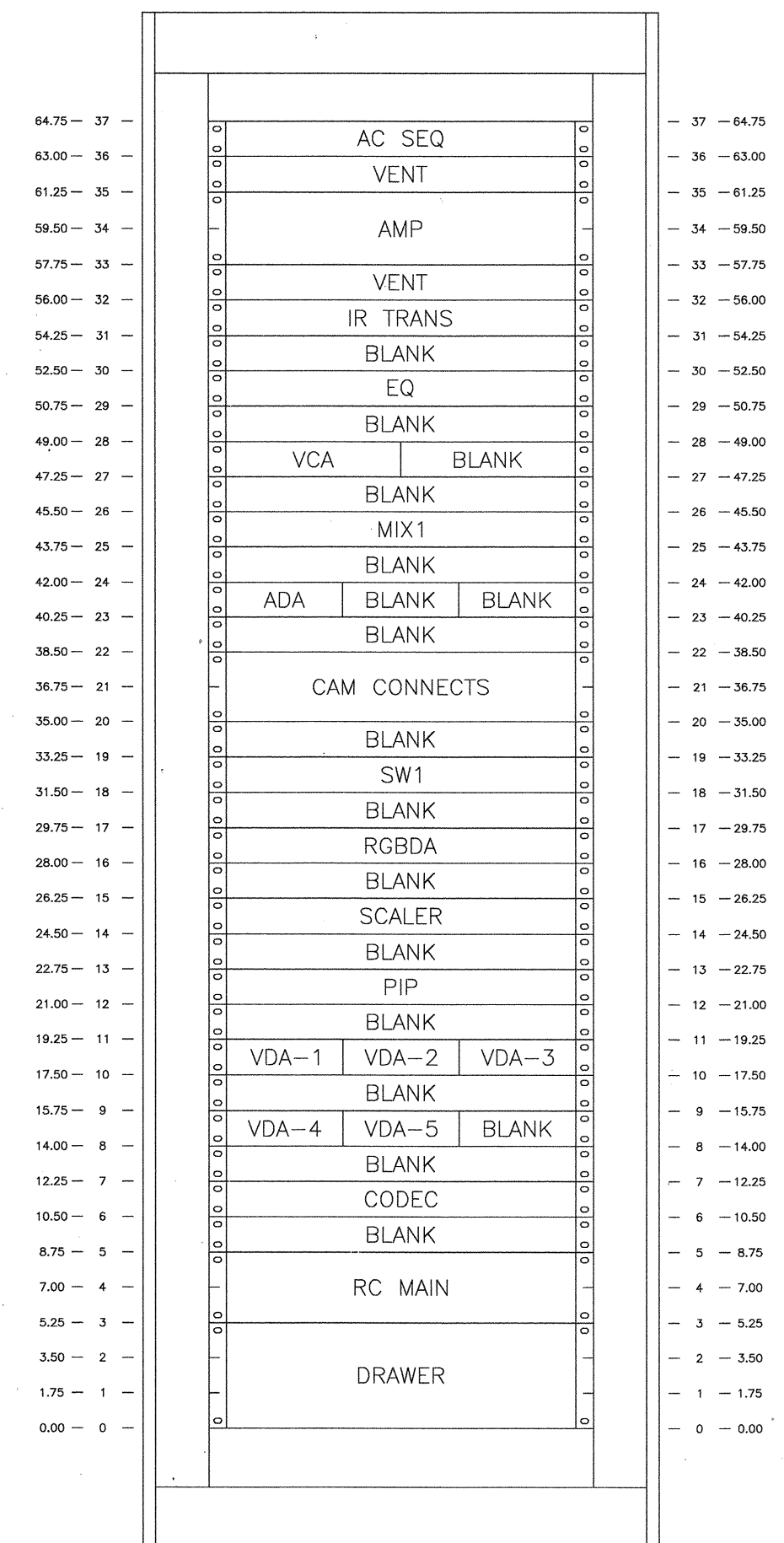
DRAWING NO:
AV6.0

ALL IDEAS, DESIGN, APPROVALS AND PLANS INDICATED ON THESE DRAWINGS ARE OWNED BY AND THE PROPERTY OF CARRIER JOHNSON AND DEVELOPED FOR USE ON AND IN CONNECTION WITH THIS PROJECT. NONE OF SUCH IDEAS, DESIGN, APPROVALS, OR PLANS SHALL BE USED BY OR DISCLOSED TO ANY PERSON, FIRM, OR CORPORATION FOR ANY PURPOSE WHATSOEVER WITHOUT THE WRITTEN PERMISSION OF CARRIER JOHNSON. FILING THESE DRAWINGS OR SPECIFICATIONS WITH ANY PUBLIC AGENCY IS NOT A PUBLICATION OF SAME. NO COPYING, REPRODUCTION OR USE THEREOF IS PERMISSIBLE WITHOUT THE CONSENT OF CARRIER JOHNSON.



2 SECTION THROUGH EQUIPMENT RACK
SCALE: 3" = 1'0"

INTERNAL RACK FRAME AND SERVICE TRACKS SHOWN IN EXTENDED POSITION FOR SERVICING. UNDER NORMAL OPERATION THE RACK WILL BE WHOLLY WITHIN ROOM 116.

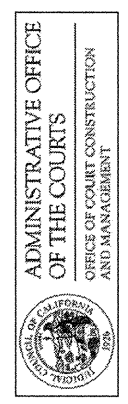


1 EQUIPMENT RACK ELEVATION
SCALE: 3" = 1'0"

carrierjohnson
architecture for urban environments
1301 third avenue san diego ca 92101
phone 619.239.2353 | fax 619.239.6227

VSA
Associates
Acoustics
Audio Visual
Noise
Vibration
Consultants
12025 Lamber 1 Rd, Whittier, CA 90606
Tel: 562-498-2468 Fax: 562-498-2338

**COURT OF APPEAL
FOURTH APPELLATE DISTRICT
DIVISION THREE
SANTA ANA, CA**



04-09-07 95% CD SUBMITTAL
02-08-07 50% CD SUBMITTAL
ISSUES:

PROJECT NO:
AV6.0
FILENAME:
DRAWN BY: TSH CHECKED BY: TSH
PLOT DATE:

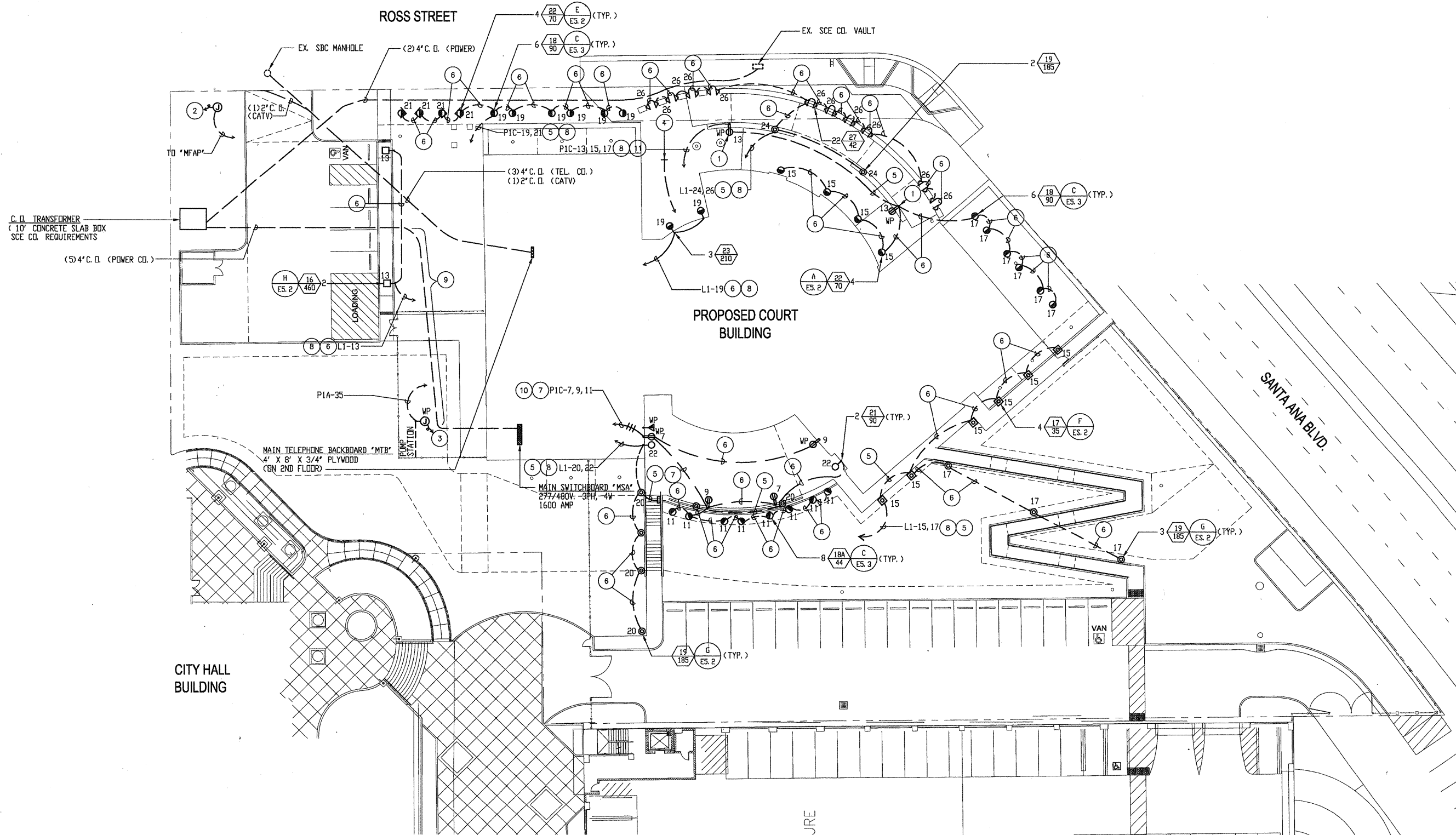
TITLE:
**COURT ROOM
AUDIO-VISUAL
RACK DETAIL**

DRAWING NO:

AV6.1

ALL IDEAS, DESIGN, ARRANGEMENTS AND PLANS INDICATED OR REPRESENTED BY THIS DRAWING ARE OWNED BY, AND THE PROPERTY OF CARRIER JOHNSON, AND WERE CREATED, EVOLVED AND DEVELOPED FOR USE ON, AND IN CONNECTION WITH THIS PROJECT. NONE OF SUCH IDEAS, DESIGN, ARRANGEMENTS, OR PLANS SHALL BE USED BY, OR DISCLOSED TO ANY PERSON, FIRM, OR CORPORATION FOR ANY PURPOSE WHATSOEVER WITHOUT THE WRITTEN PERMISSION OF CARRIER JOHNSON. REPRODUCTION OR USE THEREOF IS NOT PERMITTED WITHOUT THE WRITTEN PERMISSION OF CARRIER JOHNSON.

Carrier Johnson
 1301 Third Avenue, Suite 200
 San Diego, CA 92101
 Phone 619.239.2353 | Fax 619.239.6227
 Email: info@carrierjohnson.com



- PLAN NOTES:
- 1 MOUNT ON BACK SIDE OF CONCRETE BENCH.
 - 2 CONNECT TO FIRE WATER DOUBLE DETECTOR CHECK VALVE.
 - 3 PROVIDE CONNECT TO IRRIGATION CONTROLLER. COORDINATE EXACT LOCATION WITH LANDSCAPE CONTRACTOR.
 - 4 3/4\" C.D. TO PANEL P1A. STUB OUT AND CAP CONDUIT FOR FUTURE LIGHTING OF SCULPTURE.
 - 5 PROVIDE 3#10, 1#10 GRD. - 3/4\" C.
 - 6 PROVIDE 2#10, 1#10 GRD. - 3/4\" C.
 - 7 PROVIDE 4#10, 1#10 GRD. - 3/4\" C.
 - 8 ROUTE THRU DESIGNATED RELAY IN LIGHTING CONTROL PANEL 'LCP1'. REFER TO SCHEDULE 'LCP1', SHEET EG. 1.
 - 9 CONTRACTOR IS TO COORDINATE WITH CIVIL SEWER AND WATER PLAN C4.0 TO DETERMINE DEPTHS AND ROUTING OF ELECTRICAL CONDUIT IN THIS AREA.
 - 10 ROUTE CIRCUIT '11' THRU DESIGNATED RELAY IN LIGHTING CONTROL PANEL 'LCP1'. REFER TO SCHEDULE 'LCP1', SHEET EG. 1.
 - 11 PROVIDE 2#6, 2#10, 1#10 GRD. - 1\" C.

carrierjohnson
 architecture for urban environments
 1301 third avenue san diego ca 92101
 phone 619.239.2353 | fax 619.239.6227

FBA Engineering
 1301 Third Avenue, Suite 200
 San Diego, CA 92101
 Phone 619.239.2353 | Fax 619.239.6227
 Email: info@fbaing.com
 FBA # 605.001

**COURT OF APPEAL
 FOURTH APPELLATE DISTRICT
 DIVISION THREE
 SANTA ANA, CA**

**ADMINISTRATIVE OFFICE
 OF THE COURTS**
 OFFICE OF COURT CONSTRUCTION
 AND MANAGEMENT

04-08-07 85% CD SUBMITTAL
 05-08-07 50% CD SUBMITTAL
 ISSUES:

PROJECT NO:
 FILENAME:
 E1_0_505001
 DRAWN BY: CHECKED BY:
 J.J.N. B.Z.
 PLOT DATE:
 4-05-07
 TITLE:

**SITE ELECTRICAL
 PLAN**

DRAWING NO:

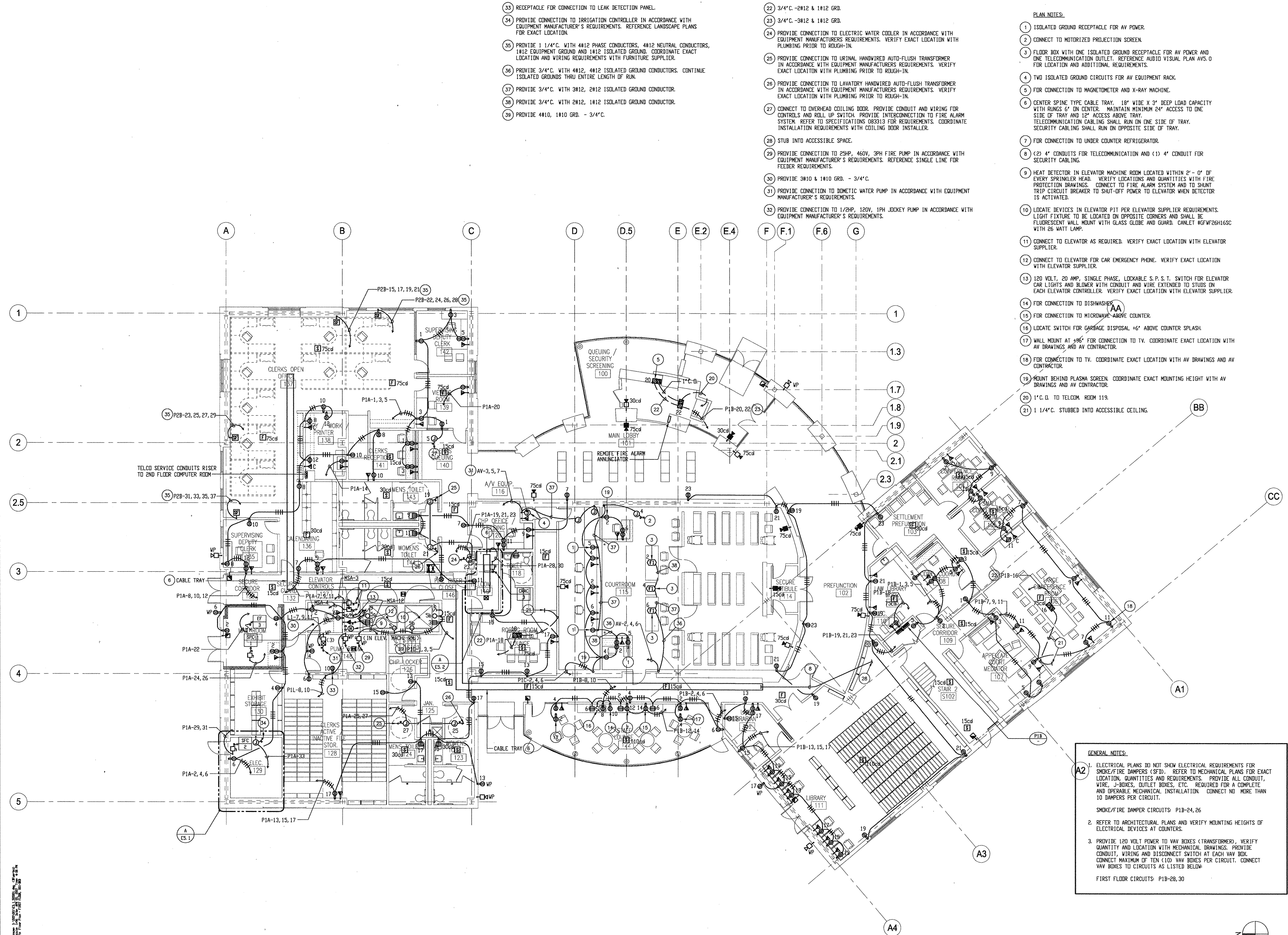
E1.0



SCALE
 1" = 20'-0" A

SITE ELECTRICAL PLAN

ALL IDEAS, DESIGN ARRANGEMENTS AND PLANS INDICATED OR REPRESENTED BY THIS DRAWING ARE OWNED BY, AND THE PROPERTY OF, CARRIER JOHNSON, AND WERE CREATED, EVALUATED AND DEVELOPED FOR USE ON, AND IN CONNECTION WITH THIS PROJECT. NONE OF SUCH IDEAS, DESIGN ARRANGEMENTS, OR PLANS SHALL BE USED BY, OR DISCLOSED TO ANY PERSON, FIRM OR CORPORATION FOR ANY PURPOSE WHATSOEVER WITHOUT THE WRITTEN PERMISSION OF CARRIER JOHNSON. PLUMBING THESE DRAWINGS OR SPECIFICATIONS WITH ANY PUBLIC AGENCY IS NOT PERMISSIBLE WITHOUT THE CONSENT OF CARRIER JOHNSON.



- 33 RECEPTACLE FOR CONNECTION TO LEAK DETECTION PANEL.
- 34 PROVIDE CONNECTION TO IRRIGATION CONTROLLER IN ACCORDANCE WITH EQUIPMENT MANUFACTURER'S REQUIREMENTS. REFERENCE LANDSCAPE PLANS FOR EXACT LOCATION.
- 35 PROVIDE 1 1/4" C. WITH 4#12 PHASE CONDUCTORS, 4#12 NEUTRAL CONDUCTORS, 1#12 EQUIPMENT GROUND AND 1#12 ISOLATED GROUND. COORDINATE EXACT LOCATION AND WIRING REQUIREMENTS WITH FURNITURE SUPPLIER.
- 36 PROVIDE 3/4" C. WITH 4#12, 4#12 ISOLATED GROUND CONDUCTORS. CONTINUE ISOLATED GROUND THRU ENTIRE LENGTH OF RUN.
- 37 PROVIDE 3/4" C. WITH 3#12, 2#12 ISOLATED GROUND CONDUCTOR.
- 38 PROVIDE 3/4" C. WITH 2#12, 1#12 ISOLATED GROUND CONDUCTOR.
- 39 PROVIDE #10, 1#10 GRD. - 3/4" C.
- 22 3/4" C. -2#12 & 1#12 GRD.
- 23 3/4" C. -3#12 & 1#12 GRD.
- 24 PROVIDE CONNECTION TO ELECTRIC WATER COOLER IN ACCORDANCE WITH EQUIPMENT MANUFACTURER'S REQUIREMENTS. VERIFY EXACT LOCATION WITH PLUMBING PRIOR TO ROUGH-IN.
- 25 PROVIDE CONNECTION TO URINAL HANDWIRED AUTO-FLUSH TRANSFORMER IN ACCORDANCE WITH EQUIPMENT MANUFACTURER'S REQUIREMENTS. VERIFY EXACT LOCATION WITH PLUMBING PRIOR TO ROUGH-IN.
- 26 PROVIDE CONNECTION TO LAVATORY HANDWIRED AUTO-FLUSH TRANSFORMER IN ACCORDANCE WITH EQUIPMENT MANUFACTURER'S REQUIREMENTS. VERIFY EXACT LOCATION WITH PLUMBING PRIOR TO ROUGH-IN.
- 27 CONNECT TO OVERHEAD COILING DOOR. PROVIDE CONDUIT AND WIRING FOR CONTROLS AND ROLL UP SWITCH. PROVIDE INTERCONNECTION TO FIRE ALARM SYSTEM. REFER TO SPECIFICATIONS 083313 FOR REQUIREMENTS. COORDINATE INSTALLATION REQUIREMENTS WITH COILING DOOR INSTALLER.
- 28 STUB INTO ACCESSIBLE SPACE.
- 29 PROVIDE CONNECTION TO 25HP, 460V, 3PH FIRE PUMP IN ACCORDANCE WITH EQUIPMENT MANUFACTURER'S REQUIREMENTS. REFERENCE SINGLE LINE FOR FEEDER REQUIREMENTS.
- 30 PROVIDE 3#10 & 1#10 GRD. - 3/4" C.
- 31 PROVIDE CONNECTION TO DOMESTIC WATER PUMP IN ACCORDANCE WITH EQUIPMENT MANUFACTURER'S REQUIREMENTS.
- 32 PROVIDE CONNECTION TO 1/2HP, 120V, 1PH JOCKEY PUMP IN ACCORDANCE WITH EQUIPMENT MANUFACTURER'S REQUIREMENTS.

- PLAN NOTES:**
- 1 ISOLATED GROUND RECEPTACLE FOR AV POWER.
 - 2 CONNECT TO MOTORIZED PROJECTION SCREEN.
 - 3 FLOOR BOX WITH ONE ISOLATED GROUND RECEPTACLE FOR AV POWER AND ONE TELECOMMUNICATION OUTLET. REFERENCE AUDIO VISUAL PLAN AYS.0 FOR LOCATION AND ADDITIONAL REQUIREMENTS.
 - 4 TWO ISOLATED GROUND CIRCUITS FOR AV EQUIPMENT RACK.
 - 5 FOR CONNECTION TO MAGNETOMETER AND X-RAY MACHINE.
 - 6 CENTER SPINE TYPE CABLE TRAY, 18" WIDE X 3" DEEP LOAD CAPACITY WITH RUNGS 6" ON CENTER. MAINTAIN MINIMUM 24" ACCESS TO ONE SIDE OF TRAY AND 12" ACCESS ABOVE TRAY. TELECOMMUNICATION CABLE SHALL RUN ON ONE SIDE OF TRAY. SECURITY CABLE SHALL RUN ON OPPOSITE SIDE OF TRAY.
 - 7 FOR CONNECTION TO UNDER COUNTER REFRIGERATOR.
 - 8 (2) 4" CONDUITS FOR TELECOMMUNICATION AND (1) 4" CONDUIT FOR SECURITY CABLEING.
 - 9 HEAT DETECTOR IN ELEVATOR MACHINE ROOM LOCATED WITHIN 2'-0" OF EVERY SPRINKLER HEAD. VERIFY LOCATIONS AND QUANTITIES WITH FIRE PROTECTION DRAWINGS. CONNECT TO FIRE ALARM SYSTEM AND TO SHUNT TRIP CIRCUIT BREAKER TO SHUT-OFF POWER TO ELEVATOR WHEN DETECTOR IS ACTIVATED.
 - 10 LOCATE DEVICES IN ELEVATOR PIT PER ELEVATOR SUPPLIER REQUIREMENTS. LIGHT FIXTURE TO BE LOCATED ON OPPOSITE CORNERS AND SHALL BE FLUORESCENT WALL MOUNT WITH GLASS GLOBE AND GUARD. CANLET #GFWF26H16SC WITH 26 WATT LAMP.
 - 11 CONNECT TO ELEVATOR AS REQUIRED. VERIFY EXACT LOCATION WITH ELEVATOR SUPPLIER.
 - 12 CONNECT TO ELEVATOR FOR CAR EMERGENCY PHONE. VERIFY EXACT LOCATION WITH ELEVATOR SUPPLIER.
 - 13 120 VOLT, 20 AMP, SINGLE PHASE, LOCKABLE S.P.S.T. SWITCH FOR ELEVATOR CAR LIGHTS AND BLOWER WITH CONDUIT AND WIRE EXTENDED TO STUDS ON EACH ELEVATOR CONTROLLER. VERIFY EXACT LOCATION WITH ELEVATOR SUPPLIER.
 - 14 FOR CONNECTION TO DISHWASHER.
 - 15 FOR CONNECTION TO MICROWAVE ABOVE COUNTER.
 - 16 LOCATE SWITCH FOR GARBAGE DISPOSAL 46" ABOVE COUNTER SPLASH.
 - 17 WALL MOUNT AT 96" FOR CONNECTION TO TV. COORDINATE EXACT LOCATION WITH AV DRAWINGS AND AV CONTRACTOR.
 - 18 FOR CONNECTION TO TV. COORDINATE EXACT LOCATION WITH AV DRAWINGS AND AV CONTRACTOR.
 - 19 MOUNT BEHIND PLASMA SCREEN. COORDINATE EXACT MOUNTING HEIGHT WITH AV DRAWINGS AND AV CONTRACTOR.
 - 20 1" C.O. TO TELCOM ROOM 119.
 - 21 1 1/4" C. STUBBED INTO ACCESSIBLE CEILING.

- GENERAL NOTES:**
1. ELECTRICAL PLANS DO NOT SHOW ELECTRICAL REQUIREMENTS FOR SMOKE/FIRE DAMPERS (SFD). REFER TO MECHANICAL PLANS FOR EXACT LOCATION, QUANTITIES AND REQUIREMENTS. PROVIDE ALL CONDUIT, WIRE, J-BOXES, OUTLET BOXES, ETC. REQUIRED FOR A COMPLETE AND OPERABLE MECHANICAL INSTALLATION. CONNECT NO MORE THAN 10 DAMPERS PER CIRCUIT.
 2. REFER TO ARCHITECTURAL PLANS AND VERIFY MOUNTING HEIGHTS OF ELECTRICAL DEVICES AT COUNTERS.
 3. PROVIDE 120 VOLT POWER TO VAV BOXES (TRANSFORMER), VERIFY QUANTITY AND LOCATION WITH MECHANICAL DRAWINGS. PROVIDE CONDUIT, WIRING AND DISCONNECT SWITCH AT EACH VAV BOX. CONNECT MAXIMUM OF TEN (10) VAV BOXES PER CIRCUIT. CONNECT VAV BOXES TO CIRCUITS AS LISTED BELOW:
- FIRST FLOOR CIRCUITS: P1B-28,30

carrierjohnson
 architecture for urban environments
 1301 third avenue san diego ca 92101
 phone 619.239.2353 | fax 619.239.6227

FBA Engineering
 3100 Plaza Avenue Suite 300
 San Diego, CA 92108
 Phone: 619.594.8800
 Fax: 619.594.8801
 EMAIL: fba@fbaengineering.com
 FBA # 806001

**COURT OF APPEAL
 FOURTH APPELLATE DISTRICT
 DIVISION THREE
 SANTA ANA, CA**

**ADMINISTRATIVE OFFICE
 OF THE COURTS**
 OFFICE OF COURT CONSTRUCTION
 AND MANAGEMENT

04-09-07 95% CD SUBMITTAL
 02-09-07 60% CD SUBMITTAL
 ISSUES:

PROJECT NO:
 FILENAME:
 E3.1_505001
 DRAWN BY: CHECKED BY:
 J.N. B.Z.
 PLOT DATE:
 4-05-07
 TITLE:

**FIRST FLOOR
 POWER & SIGNAL
 PLAN**

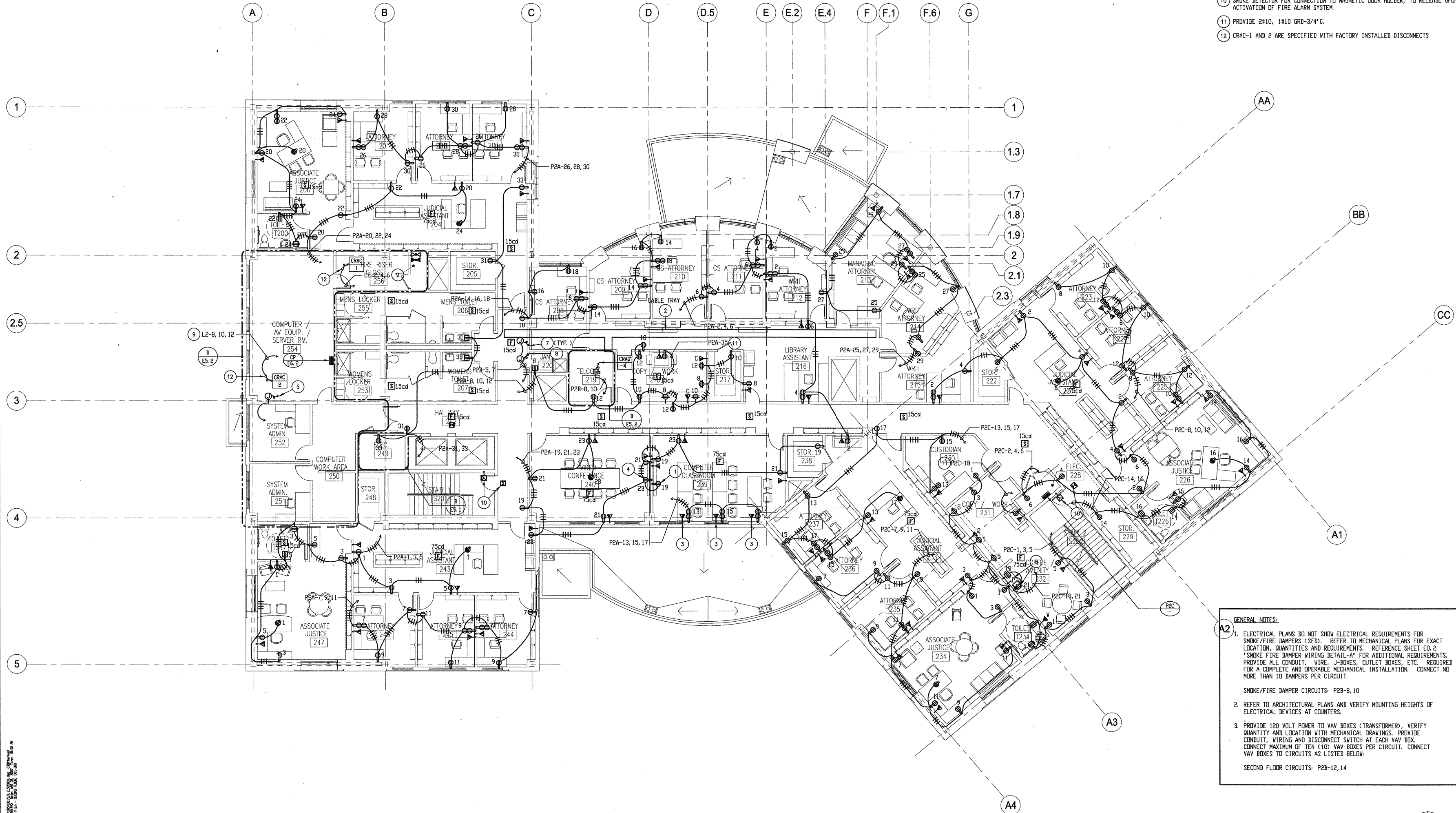
DRAWING NO:

E3.1

FIRST FLOOR POWER AND SIGNAL PLAN

SCALE
 1/8" = 1'-0" A

ALL IDEA DESIGN, ARRANGEMENTS AND PLANS INDICATED OR REPRESENTED BY THIS DRAWING ARE OWNED BY, AND THE PROPERTY OF CARRIER JOHNSON, AND WERE CREATED, EVOLVED AND DEVELOPED FOR USE ON, AND IN CONNECTION WITH THIS PROJECT. NONE OF SUCH IDEAS, DESIGN ARRANGEMENTS, OR PLANS SHALL BE USED BY OR DISCLOSED TO ANY PERSON, FIRM, OR CORPORATION FOR ANY PURPOSE WHATSOEVER WITHOUT THE WRITTEN PERMISSION OF CARRIER JOHNSON. PLACING THESE DRAWINGS OR REPRODUCTIONS WITH ANY PUBLIC AGENCY IS NOT A PUBLICATION OF SAME. NO COPIES, REPRODUCTIONS OR USE THEREOF IS PERMISSIBLE WITHOUT THE CONSENT OF CARRIER JOHNSON.



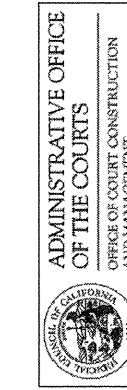
- PLAN NOTES:**
- 1 MOUNT BEHIND PLASMA SCREEN. COORDINATE EXACT MOUNTING HEIGHT WITH AV DRAWINGS AND AV CONTRACTOR.
 - 2 CENTER SPINE TYPE CABLE TRAY. 18" WIDE X 3" DEEP LOAD CAPACITY WITH RUNGS 6" ON CENTER. MAINTAIN MINIMUM 24" ACCESS TO ONE SIDE OF TRAY AND 12" ACCESS ABOVE TRAY. TELECOMMUNICATION CABLING SHALL RUN ON ONE SIDE OF TRAY. SECURITY CABLING SHALL RUN ON OPPOSITE SIDE OF TRAY.
 - 3 TELECOMMUNICATION OUTLET SHALL BE PROVIDED WITH 4 DATA CABLES ONLY. VOICE CABLE NOT REQUIRED.
 - 4 MOUNT BEHIND VIDEO CONFERENCE TV SCREEN. COORDINATE EXACT MOUNTING HEIGHT WITH AV DRAWINGS AND AV CONTRACTOR.
 - 5 CONNECT TO AC SYSTEM AUTO CHANGE OVER CONTROL PANEL.
 - 6 PROVIDE CONNECT AS REQUIRED TO GARBAGE DISPOSAL. LOCATE SWITCH FOR GARBAGE DISPOSAL +6" ABOVE COUNTER SPLASH.
 - 7 PROVIDE CONNECTION TO HANDWIRED URINAL AUTO-FLUSH TRANSFORMER IN ACCORDANCE WITH EQUIPMENT MANUFACTURERS REQUIREMENTS. VERIFY EXACT LOCATION WITH PLUMBING PRIOR TO ROUGH-IN.
 - 8 PROVIDE CONNECTION TO HANDWIRED LAVATORY AUTO-FLUSH TRANSFORMER IN ACCORDANCE WITH EQUIPMENT MANUFACTURERS REQUIREMENTS. VERIFY EXACT LOCATION WITH PLUMBING PRIOR TO ROUGH-IN.
 - 9 PROVIDE 3#8, 1#10 GRD. - 1" C.
 - 10 SMOKE DETECTOR FOR CONNECTION TO MAGNETIC DOOR HOLDER, TO RELEASE UPON ACTIVATION OF FIRE ALARM SYSTEM.
 - 11 PROVIDE 2#10, 1#10 GRD-3/4" C.
 - 12 CRAC-1 AND 2 ARE SPECIFIED WITH FACTORY INSTALLED DISCONNECTS

- GENERAL NOTES:**
- 1 ELECTRICAL PLANS DO NOT SHOW ELECTRICAL REQUIREMENTS FOR SMOKE/FIRE DAMPERS (SFD). REFER TO MECHANICAL PLANS FOR EXACT LOCATION, QUANTITIES AND REQUIREMENTS. REFERENCE SHEET E0.2 *SMOKE FIRE DAMPER WIRING DETAIL-A* FOR ADDITIONAL REQUIREMENTS. PROVIDE ALL CONDUIT, WIRE, J-BOXES, OUTLET BOXES, ETC. REQUIRED FOR A COMPLETE AND OPERABLE MECHANICAL INSTALLATION. CONNECT NO MORE THAN 10 DAMPERS PER CIRCUIT.
SMOKE/FIRE DAMPER CIRCUITS: P2B-8, 10
 - 2 REFER TO ARCHITECTURAL PLANS AND VERIFY MOUNTING HEIGHTS OF ELECTRICAL DEVICES AT COUNTERS.
 - 3 PROVIDE 120 VOLT POWER TO VAV BOXES (TRANSFORMER), VERIFY QUANTITY AND LOCATION WITH MECHANICAL DRAWINGS. PROVIDE CONDUIT, WIRING AND DISCONNECT SWITCH AT EACH VAV BOX. CONNECT MAXIMUM OF TEN (10) VAV BOXES PER CIRCUIT. CONNECT VAV BOXES TO CIRCUITS AS LISTED BELOW.
SECOND FLOOR CIRCUITS: P2B-12, 14

carrierjohnson
architecture for urban environments
1301 third avenue san diego ca 92101
phone 619.239.2353 | fax 619.239.6227



**COURT OF APPEAL
FOURTH APPELLATE DISTRICT
DIVISION THREE
SANTA ANA, CA**



04-09-07 85% CD SUBMITTAL
03-08-07 50% CD SUBMITTAL
ISSUES:

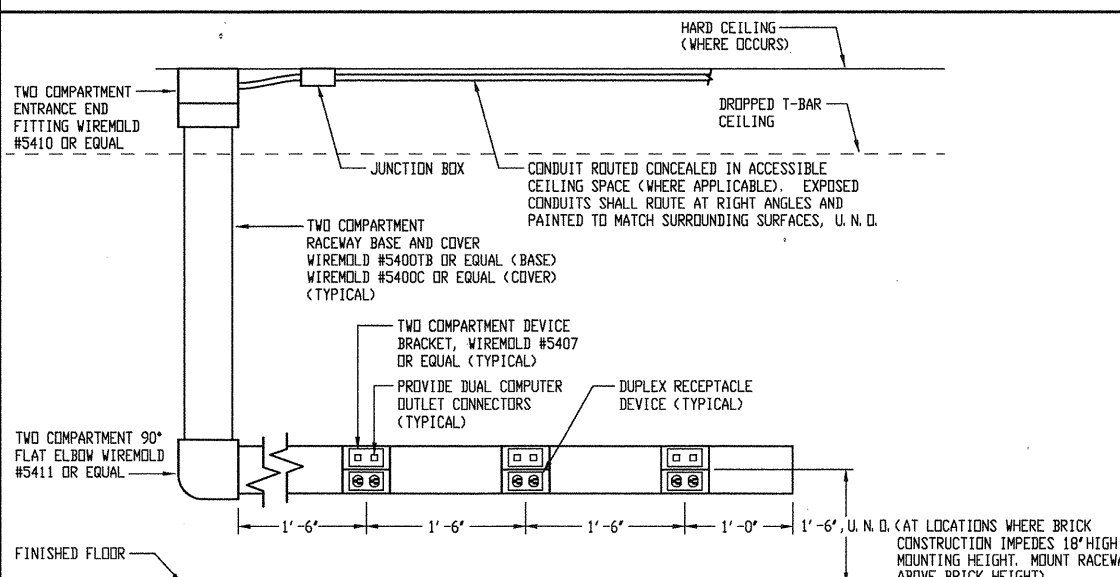
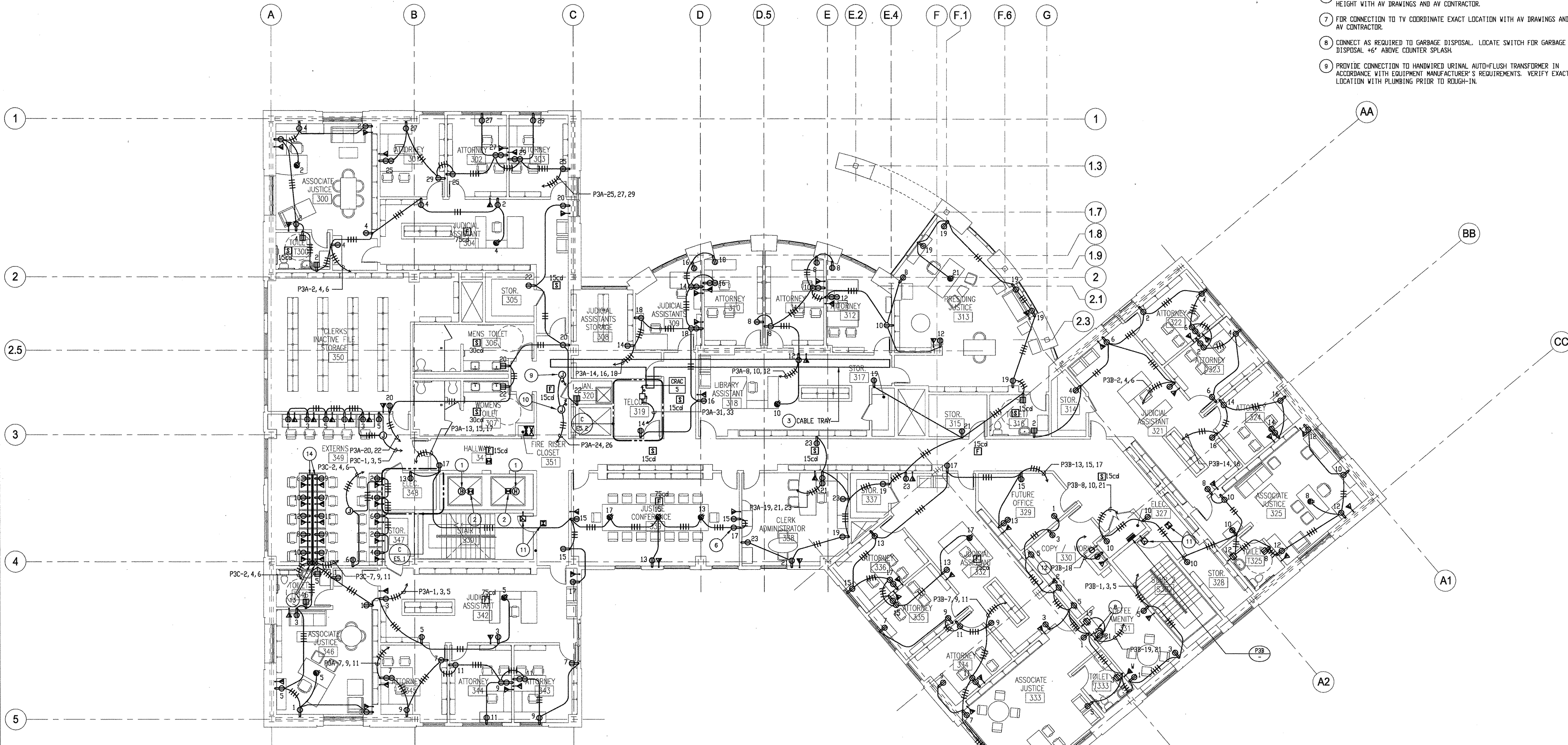
PROJECT NO:
FILENAME:
E3.2_506001
DRAWN BY: CHECKED BY:
J.N. B.Z.
PLOT DATE:
4-05-07
TITLE:
**SECOND FLOOR
POWER & SIGNAL
PLAN**
DRAWING NO:

E3.2

SECOND FLOOR POWER AND SIGNAL PLAN

SCALE
1/8" = 1'-0" A

ALL IDEAS, DESIGN, ARRANGEMENTS AND PLANS INDICATED OR REPRESENTED BY THIS DRAWING ARE OWNED BY, AND THE PROPERTY OF, CARRIER JOHNSON AND WERE CREATED, EVOLVED AND DEVELOPED FOR USE ON, AND IN CONNECTION WITH THIS PROJECT. NONE OF SUCH IDEAS, DESIGN, ARRANGEMENTS, OR PLANS SHALL BE USED BY, OR DISCLOSED TO ANY PERSON, FIRM, OR CORPORATION WITHOUT THE WRITTEN PERMISSION OF CARRIER JOHNSON. PLEASE DO NOT REPRODUCE OR USE THESE DRAWINGS OR SPECIFICATIONS WITHOUT THE WRITTEN PERMISSION OF CARRIER JOHNSON.



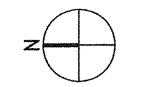
COMPUTER/POWER RACEWAY DETAIL

SCALE NONE B

- PLAN NOTES
- 1 HEAT DETECTOR LOCATED IN ELEVATOR SHAFT. CONNECT TO FIRE ALARM SYSTEM AND TO SHUNT TRIP CIRCUIT BREAKER TO SHUT-OFF POWER TO ELEVATOR WHEN DETECTOR IS ACTIVATED. PROVIDE ACCESS FROM OUTSIDE SHAFT TO SERVICE DETECTOR.
 - 2 SMOKE DETECTOR LOCATED IN ELEVATOR SHAFT FOR ELEVATOR RECALL. PROVIDE ACCESS TO DETECTOR FROM OUTSIDE SHAFT.
 - 3 CENTER SPINE TYPE CABLE TRAY, 18" WIDE X 3" DEEP LOAD CAPACITY WITH RINGS 6" ON CENTER. MAINTAIN MINIMUM 24" ACCESS TO ONE SIDE OF TRAY AND 12" ACCESS ABOVE TRAY. TELECOMMUNICATION CABLES SHALL RUN ON ONE SIDE OF TRAY. SECURITY CABLES SHALL RUN ON OPPOSITE SIDE OF TRAY.
 - 4 FOR POWER CONNECTION TO RECEPTACLES MOUNTED IN CARRELS.
 - 5 FOR TELECOMMUNICATION CONNECTION TO OUTLETS IN CARRELS. PROVIDE 1 1/4" CONDUIT STUB UP.
 - 6 MOUNT BEHIND VIDEO CONFERENCE TV SCREEN. COORDINATE EXACT MOUNTING HEIGHT WITH AV DRAWINGS AND AV CONTRACTOR.
 - 7 FOR CONNECTION TO TV COORDINATE EXACT LOCATION WITH AV DRAWINGS AND AV CONTRACTOR.
 - 8 CONNECT AS REQUIRED TO GARBAGE DISPOSAL. LOCATE SWITCH FOR GARBAGE DISPOSAL +6" ABOVE COUNTER SPLASH.
 - 9 PROVIDE CONNECTION TO HANDWIRED URINAL, AUTO-FLUSH TRANSFORMER IN ACCORDANCE WITH EQUIPMENT MANUFACTURER'S REQUIREMENTS. VERIFY EXACT LOCATION WITH PLUMBING PRIOR TO ROUGH-IN.
 - 10 PROVIDE CONNECTION TO HANDWIRED LAVATORY AUTO-FLUSH TRANSFORMER IN ACCORDANCE WITH EQUIPMENT MANUFACTURER'S REQUIREMENTS. VERIFY EXACT LOCATION WITH PLUMBING PRIOR TO ROUGH-IN.
 - 11 SMOKE DETECTOR FOR CONNECTION TO MAGNETIC DOOR HOLDERS, TO RELEASE UPON ACTIVATION OF FIRE ALARM SYSTEM.
 - 12 PROVIDE 2#10, 1810 GRD-3/4"C.
 - 13 PROVIDE TWO COMPARTMENT VERTICAL RACEWAY FOR ROUTING OF POWER CONDUCTORS AND COMPUTER NETWORK CABLING. TERMINATE AT TRANSITION BOX (WITH BARRIER) IN ACCESSIBLE CEILING SPACE. PROVIDE RACEWAY TYPE AND ASSOCIATED COMPONENTS PER 'COMPUTER/POWER RACEWAY DETAIL' SPECIFICATIONS THIS SHEET. COORDINATE EXACT LOCATION OF RISER WITH DISTRICT PRIOR TO ROUGH-IN.
 - 14 PROVIDE TWO COMPARTMENT HORIZONTAL RACEWAY FOR ROUTING OF POWER CONDUCTORS AND COMPUTER NETWORK CABLING AND MOUNTING OF DEVICES. PROVIDE DUPLEX RECEPTACLES AND DATA OUTLETS IN LOCATIONS SHOWN. PROVIDE RACEWAY TYPE AND ASSOCIATED COMPONENTS PER 'COMPUTER/POWER RACEWAY DETAIL' SPECIFICATIONS THIS SHEET. RACEWAY SHALL BE LOCATED AT +18" A.F.F. TO CENTER.

- PLAN NOTES
- 1 HEAT DETECTOR LOCATED IN ELEVATOR SHAFT. CONNECT TO FIRE ALARM SYSTEM AND TO SHUNT TRIP CIRCUIT BREAKER TO SHUT-OFF POWER TO ELEVATOR WHEN DETECTOR IS ACTIVATED. PROVIDE ACCESS FROM OUTSIDE SHAFT TO SERVICE DETECTOR.
 - 2 SMOKE DETECTOR LOCATED IN ELEVATOR SHAFT FOR ELEVATOR RECALL. PROVIDE ACCESS TO DETECTOR FROM OUTSIDE SHAFT.
 - 3 CENTER SPINE TYPE CABLE TRAY, 18" WIDE X 3" DEEP LOAD CAPACITY WITH RINGS 6" ON CENTER. MAINTAIN MINIMUM 24" ACCESS TO ONE SIDE OF TRAY AND 12" ACCESS ABOVE TRAY. TELECOMMUNICATION CABLES SHALL RUN ON ONE SIDE OF TRAY. SECURITY CABLES SHALL RUN ON OPPOSITE SIDE OF TRAY.
 - 4 FOR POWER CONNECTION TO RECEPTACLES MOUNTED IN CARRELS.
 - 5 FOR TELECOMMUNICATION CONNECTION TO OUTLETS IN CARRELS. PROVIDE 1 1/4" CONDUIT STUB UP.
 - 6 MOUNT BEHIND VIDEO CONFERENCE TV SCREEN. COORDINATE EXACT MOUNTING HEIGHT WITH AV DRAWINGS AND AV CONTRACTOR.
 - 7 FOR CONNECTION TO TV COORDINATE EXACT LOCATION WITH AV DRAWINGS AND AV CONTRACTOR.
 - 8 CONNECT AS REQUIRED TO GARBAGE DISPOSAL. LOCATE SWITCH FOR GARBAGE DISPOSAL +6" ABOVE COUNTER SPLASH.
 - 9 PROVIDE CONNECTION TO HANDWIRED URINAL, AUTO-FLUSH TRANSFORMER IN ACCORDANCE WITH EQUIPMENT MANUFACTURER'S REQUIREMENTS. VERIFY EXACT LOCATION WITH PLUMBING PRIOR TO ROUGH-IN.

- GENERAL NOTES:
1. ELECTRICAL PLANS DO NOT SHOW ELECTRICAL REQUIREMENTS FOR SMOKE/FIRE DAMPERS (SFD). REFER TO MECHANICAL PLANS FOR EXACT LOCATION, QUANTITIES AND REQUIREMENTS. REFERENCE SHEET EQ-2 "SMOKE/FIRE DAMPER WIRING DETAIL-4" FOR ADDITIONAL REQUIREMENTS. PROVIDE ALL CONDUIT, WIRE, J-BOXES, OUTLET BOXES, ETC. REQUIRED FOR A COMPLETE AND OPERABLE MECHANICAL INSTALLATION. CONNECT NO MORE THAN 10 DAMPERS PER CIRCUIT.
SMOKE/FIRE DAMPER CIRCUIT: P3B-28, 30
 2. REFER TO ARCHITECTURAL PLANS AND VERIFY MOUNTING HEIGHTS OF ELECTRICAL DEVICES AT COUNTERS.
 3. PROVIDE 120 VOLT POWER TO VAV BOXES (TRANSFORMER), VERIFY QUANTITY AND LOCATION WITH MECHANICAL DRAWINGS. PROVIDE CONDUIT, WIRING AND DISCONNECT SWITCH AT EACH VAV BOX. CONNECT MAXIMUM OF TEN (10) VAV BOXES PER CIRCUIT. CONNECT VAV BOXES TO CIRCUITS AS LISTED BELOW.
THIRD FLOOR CIRCUITS: P3B-32, 30



carrierjohnson
architecture for urban environments
1301 third avenue san diego ca 92101
phone 619.239.2953 | fax 619.239.6227

FBA Engineering
3400 Pacific Avenue, Suite 300
San Diego, CA 92108
Tel: 619.594.8888
Fax: 619.594.8889
EMAIL: fba@fbaengineering.net
FBA # 505.001

**COURT OF APPEAL
FOURTH APPELLATE DISTRICT
DIVISION THREE
SANTA ANA, CA**

**ADMINISTRATIVE OFFICE
OF THE COURTS**
OFFICE OF COURT CONSTRUCTION
AND MANAGEMENT

04-09-07 85% CD SUBMITTAL
05-09-07 60% CD SUBMITTAL
ISSUES:

PROJECT NO:
FILENAME:
ES-3_505001
DRAWN BY: J.N. B.Z.
CHECKED BY:
DATE: 4-05-07
TITLE:

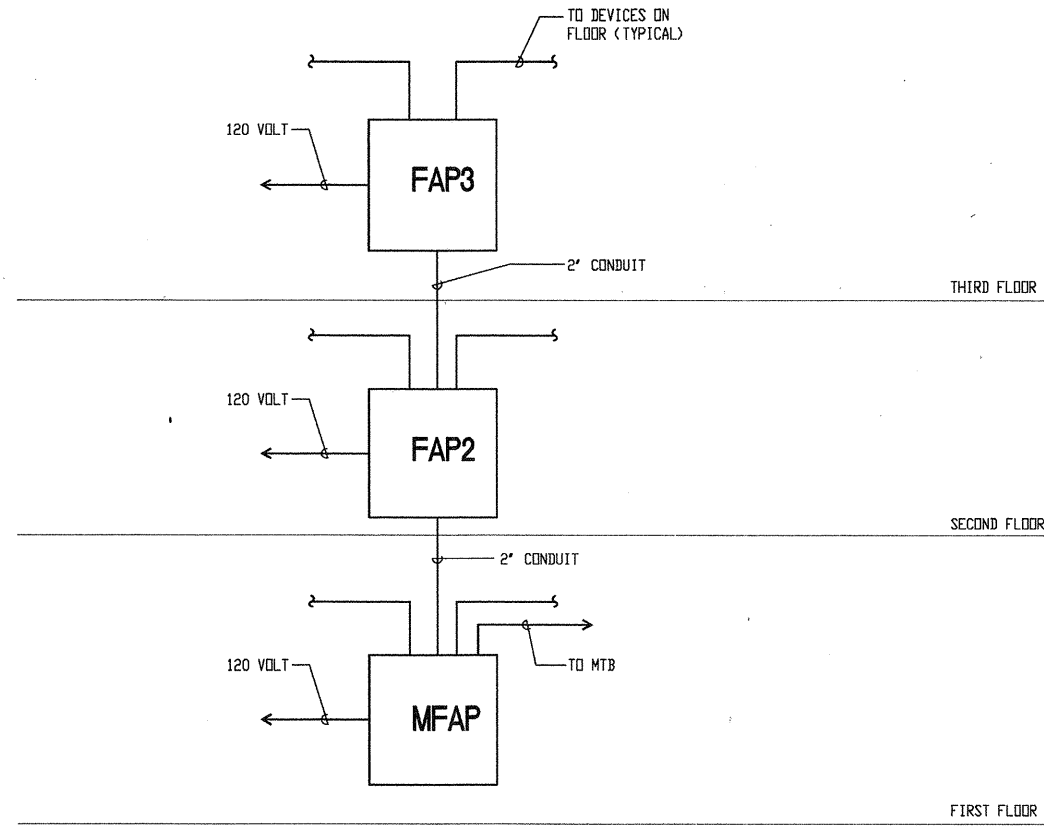
**THIRD FLOOR
POWER & SIGNAL
PLAN**

DRAWING NO:

E3.3

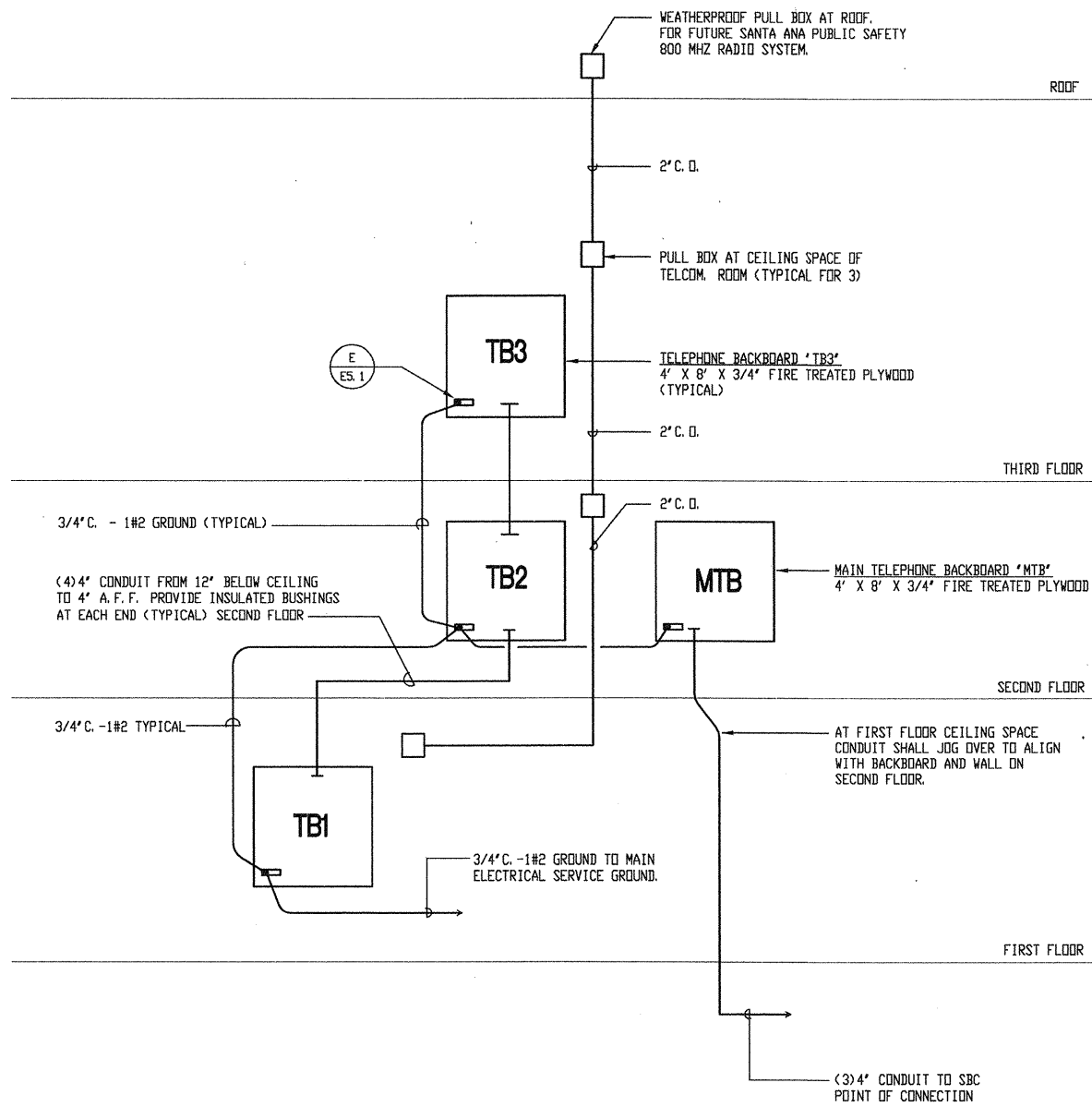
SCALE 1/8" = 1'-0" A

ALL IDEAS, DESIGN, ARRANGEMENTS AND PLANS INDICATED OR REPRESENTED BY THIS DRAWING ARE OWNED BY AND THE PROPERTY OF CARRIER JOHNSON AND WERE CREATED BY OR UNDER THE CLOSE PERSONAL SUPERVISION AND DIRECT CONTROL OF CARRIER JOHNSON. NO PART OF THIS DRAWING SHALL BE REPRODUCED OR TRANSMITTED IN ANY FORM OR BY ANY MEANS, ELECTRONIC OR MECHANICAL, INCLUDING PHOTOCOPYING, RECORDING, OR BY ANY INFORMATION STORAGE AND RETRIEVAL SYSTEM, WITHOUT THE WRITTEN PERMISSION OF CARRIER JOHNSON. THIS DRAWING IS THE PROPERTY OF CARRIER JOHNSON AND IS NOT TO BE REPRODUCED OR TRANSMITTED IN ANY FORM OR BY ANY MEANS, ELECTRONIC OR MECHANICAL, INCLUDING PHOTOCOPYING, RECORDING, OR BY ANY INFORMATION STORAGE AND RETRIEVAL SYSTEM, WITHOUT THE WRITTEN PERMISSION OF CARRIER JOHNSON. PROJECT NO. 04-08-07. DRAWING NO. E5.1. DATE: 4-05-07. SCALE: AS SHOWN. SHEET NO. 1 OF 3. CARRIER JOHNSON ARCHITECTURE FOR URBAN ENVIRONMENTS, 1301 THIRD AVENUE, SAN DIEGO, CA 92101. PHONE: 619.239.2353. FAX: 619.239.6227. E-mail: info@carrierjohnson.com



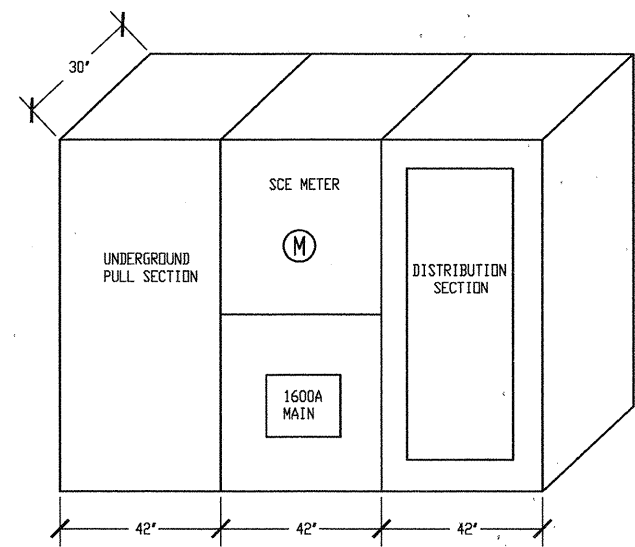
FIRE ALARM RISER DIAGRAM

SCALE: NONE
F



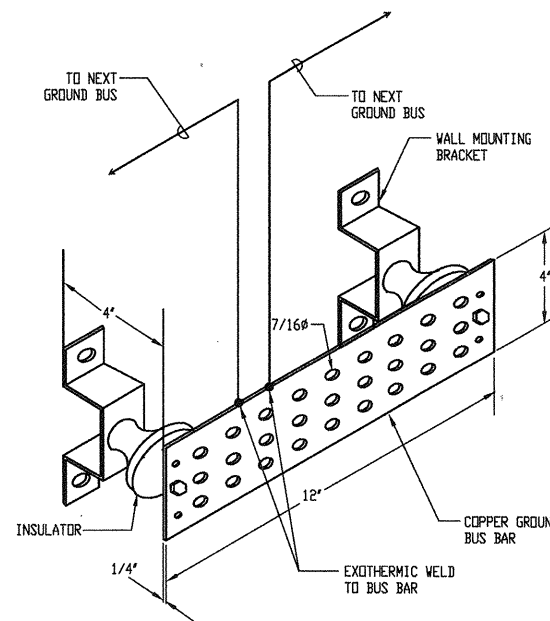
TELECOMMUNICATIONS RISER DIAGRAM

SCALE: NONE
D



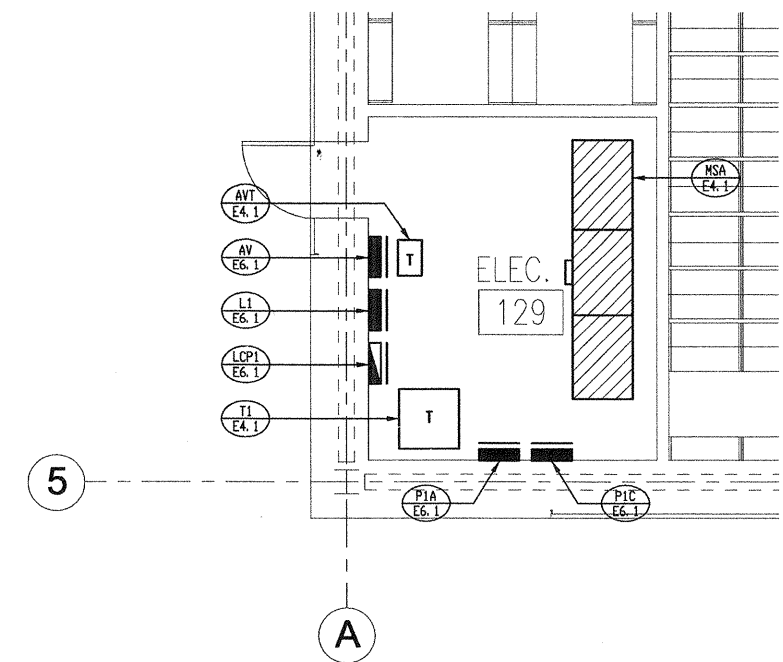
MAIN SWITCHBOARD ELEVATION

SCALE: NONE
G



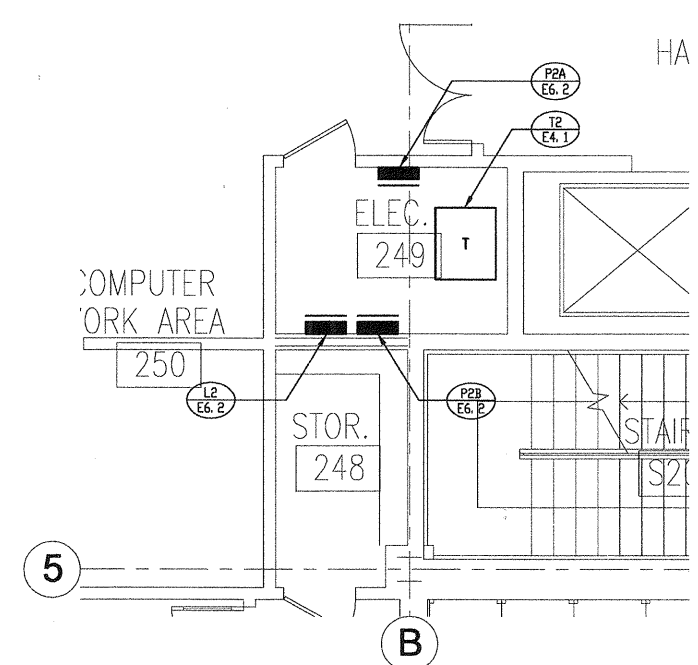
TELEPHONE BACKBOARD GROUND BUS DETAIL

SCALE: NONE
E



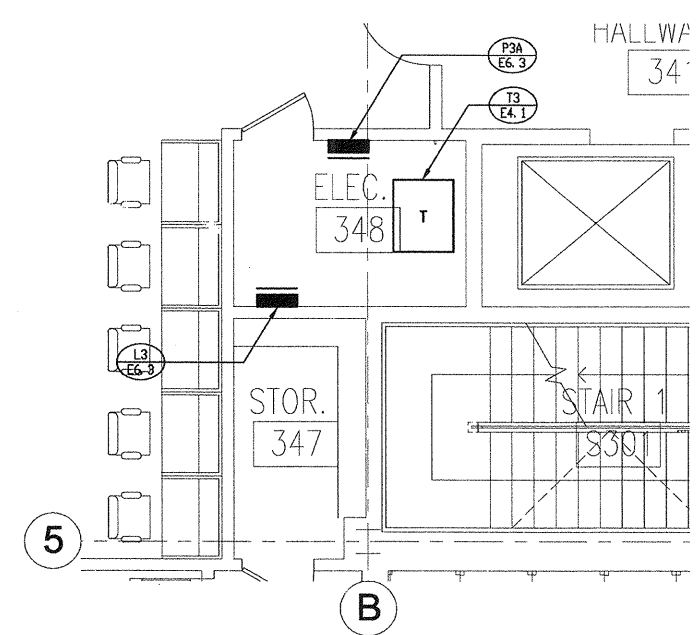
ENLARGED ELECTRICAL ROOM PLAN - FIRST FLOOR

SCALE: 1/4" = 1'-0"
A



ENLARGED ELECTRICAL ROOM PLAN - SECOND FLOOR

SCALE: 1/4" = 1'-0"
B



ENLARGED ELECTRICAL ROOM PLAN - THIRD FLOOR

SCALE: 1/4" = 1'-0"
C

carrierjohnson
architecture for urban environments
1301 third avenue san diego ca 92101
phone 619.239.2353 | fax 619.239.6227

FBA Engineering
Civil, Mechanical, Electrical, and
Structural Engineering
1301 Third Avenue, Suite 300
San Diego, CA 92101
Tel: 619.239.2353
Fax: 619.239.6227
E-mail: info@fbaengineering.com
FBA # 505.001

**COURT OF APPEAL
FOURTH APPELLATE DISTRICT
DIVISION THREE
SANTA ANA, CA**

**ADMINISTRATIVE OFFICE
OF THE COURTS**
OFFICE OF COURT CONSTRUCTION
AND MANAGEMENT

04-08-07 98% CD SUBMITTAL
02-08-07 50% CD SUBMITTAL
ISSUES:

PROJECT NO:
FILENAME:
E5.1_505001
DRAWN BY: J.J.V.
CHECKED BY: B.Z.
PLOT DATE: 4-05-07
TITLE:

DETAILS

DRAWING NO:

E5.1

ALL IDEA DESIGN, ARRANGEMENTS AND PLANS INDICATED OR REPRESENTED BY THIS DRAWING ARE OWNED BY AND THE PROPERTY OF CARRIER JOHNSON AND WERE CREATED, EVOLVED AND DEVELOPED FOR USE BY AND IN CONNECTION WITH THIS PROJECT. NONE OF SUCH IDEA DESIGN, ARRANGEMENTS OR PLANS SHALL BE USED BY OR DISCLOSED TO ANY PERSON, FIRM, OR CORPORATION FOR ANY PURPOSE WHATSOEVER WITHOUT THE WRITTEN PERMISSION OF CARRIER JOHNSON. THESE DRAWINGS OR PERMISSIONS WITH ANY PUBLIC AGENCY IS NOT A VIOLATION OF STATE OR FEDERAL LAWS. REPRODUCTION OR USE THEREOF IS PERMISSIBLE WITHOUT THE CONSENT OF CARRIER JOHNSON.

CARRIER JOHNSON
1301 THIRD AVENUE, SUITE 300
SANTA ANA, CA 92701
TEL: 949.239.6227 FAX: 949.239.6227

COURT OF APPEAL PANELBOARD PIC PROJECT NO. 505.001 MAIN L.D. BUS 225 AMP. Table with columns for LOAD (VA, W, C), TYPE, BRK, QUAN, DESCRIPTION, LOCATION, MAIN ELEC. ROOM, and OUTLET. Includes a summary table for CONNECTED VA AMPS, RECEPT, L.C.L., and LOAD TYPE.

COURT OF APPEAL PANELBOARD LI PROJECT NO. 505.001 MAIN 100A-3P BUS 100 AMP. Table with columns for LOAD (VA, W, C), TYPE, BRK, QUAN, DESCRIPTION, LOCATION, MAIN ELEC. ROOM, and OUTLET. Includes a summary table for CONNECTED VA AMPS, RECEPT, L.C.L., and LOAD TYPE.

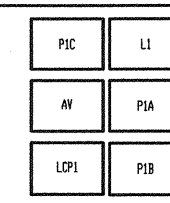
COURT OF APPEAL PANELBOARD AV PROJECT NO. 505.001 MAIN 40A-3P BUS 100 AMP. Table with columns for LOAD (VA, W, C), TYPE, BRK, QUAN, DESCRIPTION, LOCATION, MAIN ELEC. ROOM, and OUTLET. Includes a summary table for CONNECTED VA AMPS, RECEPT, L.C.L., and LOAD TYPE.

COURT OF APPEAL PANELBOARD P1A PROJECT NO. 505.001 MAIN 40A-3P BUS 400 AMP. Table with columns for LOAD (VA, W, C), TYPE, BRK, QUAN, DESCRIPTION, LOCATION, MAIN ELEC. ROOM, and OUTLET. Includes a summary table for CONNECTED VA AMPS, RECEPT, L.C.L., and LOAD TYPE.

LIGHTING CONTROL PANEL LOP1. Table with columns for RELAY, CIRCUIT NUMBER, SWITCH, MASTER SWITCH, and AREA CONTROLLED. Lists various lighting circuits and their control points.

(P/D) INDICATES PHOTOCELL ON/TIMELOCK OFF
(P/P) INDICATES PHOTOCELL ON/TIMELOCK OFF
(T/D) TIMELOCK ON/TIMELOCK OFF

COURT OF APPEAL PANELBOARD P1B PROJECT NO. 505.001 MAIN L.D. BUS 225 AMP. Table with columns for LOAD (VA, W, C), TYPE, BRK, QUAN, DESCRIPTION, LOCATION, MAIN ELEC. ROOM, and OUTLET. Includes a summary table for CONNECTED VA AMPS, RECEPT, L.C.L., and LOAD TYPE.



Administrative and contact information including: carrierjohnson architecture for urban environments; FBA Engineering; COURT OF APPEAL FOURTH APPELLATE DISTRICT DIVISION THREE SANTA ANA, CA; ADMINISTRATIVE OFFICE OF THE COURTS; PROJECT NO.; FILENAME: E6_1_505001; DRAWN BY: J.J.N.; CHECKED BY: B.Z.; PLOT DATE: 4-05-07; TITLE: PANEL SCHEDULES; DRAWING NO.: E6.1

ALL IDEAS, DESIGN ARRANGEMENTS AND PLANS INDICATED OR REPRESENTED BY THIS DRAWING ARE OWNED BY AND THE PROPERTY OF CARRIER JOHNSON AND SHOULD NOT BE REPRODUCED, COPIED, REPRODUCED, OR TRANSMITTED IN ANY MANNER WITHOUT THE WRITTEN PERMISSION OF CARRIER JOHNSON. THESE DRAWINGS OR SPECIFICATIONS WITH ANY PUBLIC AGENCY'S NOT A PUBLICATION OF SALES OR OFFERING. REPRODUCTION OR USE THEREOF IS PERMITTED WITHOUT THE CONSENT OF CARRIER JOHNSON.

CARRIER JOHNSON
1301 THIRD AVENUE, SAN DIEGO, CA 92101
PHONE 619.239.2353 | FAX 619.239.6227
WWW.CARRIERJOHNSON.COM

COURT OF APPEAL				PROJECT NO. 505.001			
VOLTS 120/208 PHASE 3PH, 4W MTG SURFACE				PANELBOARD P3C LOCATION 3RD FLOOR ELECT. ROOM MAIN L.D. BUS 225 AMP			
← LOAD (VA) →		LOAD		← LOAD (VA) →		LOAD	
OCT	A	B	C	TYPE	BKR	QUAN	DESCRIPTION
1	1100			R	20/1	2	EXTERNAL COMP RECEIPTS
3	1100			R	20/1	2	EXTERNAL COMP RECEIPTS
5	1100			R	20/1	1	EXTERNAL COMP RECEIPTS
7	1100			R	20/1	2	EXTERNAL COMP RECEIPTS
9	1100			R	20/1	2	EXTERNAL COMP RECEIPTS
11	1100			R	20/1	2	EXTERNAL COMP RECEIPTS
13					20/1		SPARE
15					20/1		SPARE
17					20/1		SPARE
19					20/1		PROVISION
21					20/1		PROVISION
23					20/1		PROVISION
25					20/1		PROVISION
27					20/1		PROVISION
29					20/1		PROVISION
31					20/1		PROVISION
33					20/1		PROVISION
35					20/1		PROVISION
37					20/1		PROVISION
39					20/1		PROVISION
41					20/1		PROVISION

CONNECTED VA	AMPS	L.C.L. @ 125% =	0	LOAD TYPE:
PHASE A = 4400	37	RECEPT. () 10 KVA @ 500 =	11000	G - GENERAL (1000)
PHASE B = 4400	37	KITCHEN @ 650 =	0	M - MOTOR (1000)
PHASE C = 3260	27	OTHER LOAD @ 1000 =	0	L - L.C.L. (1250)
TOTAL VA =		R - RECEPTACLE @ 500	11000	X - X-RAY (1000)
		(10 KVA @ 1000)		XI - X-RAY @ 500
TOTAL VA =	12660	TOTAL AMPS =	31	K - KITCHEN @ 650

COURT OF APPEAL				PROJECT NO. 505.001			
VOLTS 277/480 PHASE 3PH, 4W MTG SURFACE				PANELBOARD L3 LOCATION 3RD FLOOR ELECT. ROOM MAIN L.D. BUS 225A			
← LOAD (VA) →		LOAD		← LOAD (VA) →		LOAD	
OCT	A	B	C	TYPE	BKR	QUAN	DESCRIPTION
1	3160			L	20/1	61	THIRD FLOOR LIGHTING
3	2787			L	20/1	41	THIRD FLOOR LIGHTING
5	3099			L	20/1	68	THIRD FLOOR LIGHTING
7	2406			L	20/1	48	THIRD FLOOR LIGHTING
9	4099			MI	30/3	1	CU-3
11	4099			MI	30/3	1	CU-3
13	4099			MI	30/3	1	CU-4
15	4099			MI	30/3	1	CU-5
17	4099			MI	30/3	1	CU-5
19	4099			MI	30/3	1	CU-5
21	4409			MI	30/3	1	CU-5
23	4409			MI	30/3	1	CU-5
25	4099			MI	30/3	1	CU-5
27					20/1		SPARE
29					20/1		SPARE
31					20/1		SPARE
33					20/1		SPARE
35					20/1		SPARE
37					20/1		SPARE
39					20/1		SPARE
41					20/1		SPARE

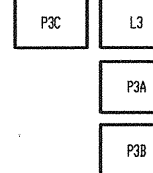
CONNECTED VA	AMPS	L.C.L. @ 125% =	8451	LOAD TYPE:
PHASE A = 2409	87	RECEPT. () 10 KVA @ 500 =	0	G - GENERAL (1000)
PHASE B = 21540	78	KITCHEN @ 650 =	0	M - MOTOR (1000)
PHASE C = 21582	79	OTHER LOAD @ 1000 =	0	L - L.C.L. (1250)
TOTAL VA =		R - RECEPTACLE @ 500	8451	X - X-RAY (1000)
		(10 KVA @ 1000)		XI - X-RAY @ 500
TOTAL VA =	67401	TOTAL AMPS =	101	K - KITCHEN @ 650

COURT OF APPEAL				PROJECT NO. 505.001			
VOLTS 120/208 PHASE 3PH, 4W MTG SURFACE				PANELBOARD P3A LOCATION 3RD FLOOR ELECT. ROOM MAIN 400A-3P BUS 400 AMP			
← LOAD (VA) →		LOAD		← LOAD (VA) →		LOAD	
OCT	A	B	C	TYPE	BKR	QUAN	DESCRIPTION
1	720			R	20/1	4	CONV. RECEIPT.
3	720			R	20/1	4	CONV. RECEIPT.
5	720			R	20/1	4	CONV. RECEIPT.
7	720			R	20/1	4	ATT. OFFICE RECEIPT.
9	720			R	20/1	4	ATT. OFFICE RECEIPT.
11	720			R	20/1	4	ATT. OFFICE RECEIPT.
13	720			R	20/1	4	CONV. RECEIPT.
15	720			R	20/1	4	CONV. RECEIPT.
17	720			R	20/1	4	CONV. RECEIPT.
19	900			R	20/1	5	CONV. RECEIPT.
21	720			R	20/1	4	CONV. RECEIPT.
23	720			R	20/1	4	CONV. RECEIPT.
25	720			R	20/1	4	CONV. RECEIPT.
27	720			R	20/1	4	ATT. OFFICE RECEIPT.
29	720			R	20/1	4	ATT. OFFICE RECEIPT.
31					20/1		SPARE
33					20/1		SPARE
35					20/1		SPARE
37	4400			G	100/3	1	PANEL P3C
39	4400			G	100/3	1	PANEL P3B
41	3260			G	150/3	1	(SURFLED)

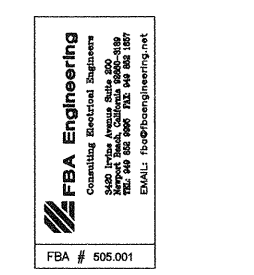
CONNECTED VA	AMPS	L.C.L. @ 125% =	0	LOAD TYPE:
PHASE A = 22903	191	RECEPT. () 10 KVA @ 500 =	16370	G - GENERAL (1000)
PHASE B = 22925	190	KITCHEN @ 650 =	0	M - MOTOR (1000)
PHASE C = 27276	227	OTHER LOAD @ 1000 =	5184	L - L.C.L. (1250)
TOTAL VA =		R - RECEPTACLE @ 500	67864	X - X-RAY (1000)
		(10 KVA @ 1000)		XI - X-RAY @ 500
TOTAL VA =	72934	TOTAL AMPS =	188	K - KITCHEN @ 650

COURT OF APPEAL				PROJECT NO. 505.001			
VOLTS 120/208 PHASE 3PH, 4W MTG SURFACE				PANELBOARD P3B LOCATION 3RD FLOOR ELECT. ROOM MAIN 150A-3P BUS 225 AMP			
← LOAD (VA) →		LOAD		← LOAD (VA) →		LOAD	
OCT	A	B	C	TYPE	BKR	QUAN	DESCRIPTION
1	720			R	20/1	4	CONV. RECEIPT.
3	720			R	20/1	4	CONV. RECEIPT.
5	720			R	20/1	4	CONV. RECEIPT.
7	720			R	20/1	4	CONV. RECEIPT.
9	720			R	20/1	4	CONV. RECEIPT.
11	720			R	20/1	4	CONV. RECEIPT.
13	720			R	20/1	4	CONV. RECEIPT.
15	720			R	20/1	4	CONV. RECEIPT.
17	720			R	20/1	4	CONV. RECEIPT.
19	1000			R	20/1	1	OFFICE MESSG.
21	1500			R	20/1	1	SMOKE SUPPRESS.
23	4368			MI	70/2	1	SAC-1
25	4368			MI	70/2	1	SAC-2
27	4368			MI	70/2	1	SAC-2
29	187			MI	20/1	1	DRIVE-5
31	187			MI	20/1	1	DRIVE-5
33	200			L	20/1	1	JUSTICE LIT.
35					20/1		PROVISION
37					20/1		PROVISION
39					20/1		PROVISION
41					20/1		PROVISION

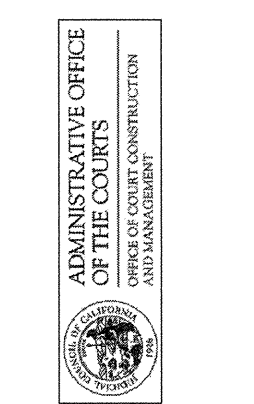
CONNECTED VA	AMPS	L.C.L. @ 125% =	23440	LOAD TYPE:
PHASE A = 11343	95	RECEPT. () 10 KVA @ 500 =	13191	G - GENERAL (1000)
PHASE B = 12255	105	KITCHEN @ 650 =	0	M - MOTOR (1000)
PHASE C = 13236	127	OTHER LOAD @ 1000 =	4000	L - L.C.L. (1250)
TOTAL VA =		R - RECEPTACLE @ 500	40631	X - X-RAY (1000)
		(10 KVA @ 1000)		XI - X-RAY @ 500
TOTAL VA =	39134	TOTAL AMPS =	113	K - KITCHEN @ 650



carrierjohnson
architecture for urban environments
1301 third avenue san diego ca 92101
phone 619.239.2353 | fax 619.239.6227



**COURT OF APPEAL
FOURTH APPELLATE DISTRICT
DIVISION THREE
SANTA ANA, CA**



04-09-07 89% CD SUBMITTAL
02-09-07 60% CD SUBMITTAL
ISSUES:
PROJECT NO:
FILENAME:
E6_3_505001
DRAWN BY: CHECKED BY:
J.N. B.Z.
PLOT DATE:
4-05-07
TITLE:

**PANEL
SCHEDULES**
DRAWING NO:
E6.3