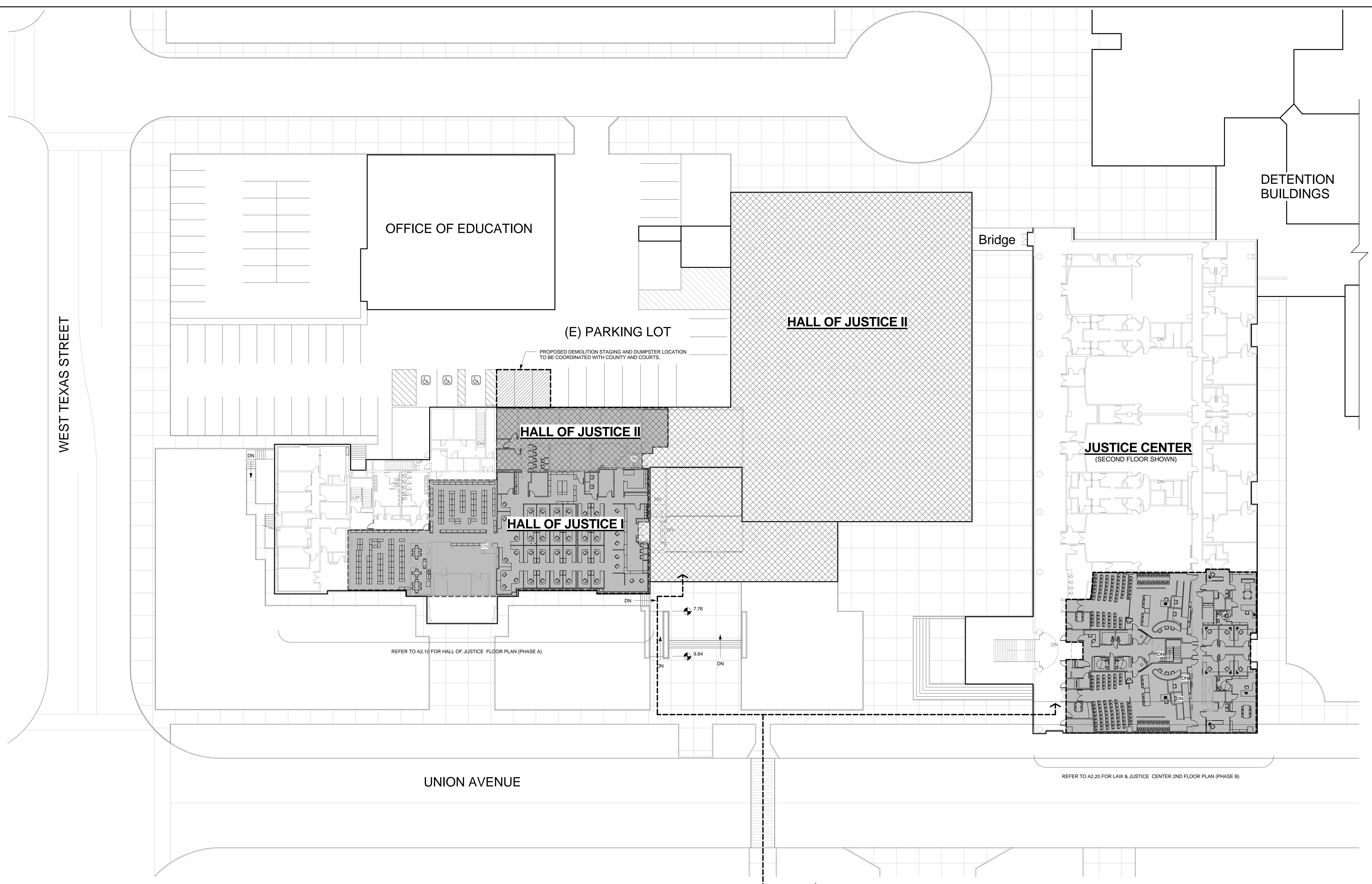
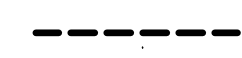

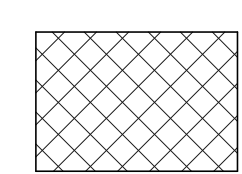


ONE AND ONE-HALF INCH = ONE FOOT
 ONE INCH = ONE FOOT
 THREE-QUARTERS INCH = ONE FOOT
 ONE-HALF INCH = ONE FOOT
 ONE-QUARTER INCH = ONE FOOT
 ONE-EIGHTH INCH = ONE FOOT
 ONE-SIXTEENTH INCH = ONE FOOT
 ONE INCH = TWENTY FEET



1 SITE KEY/SCOPE/ACCESSIBILITY PLAN
 1" = 20'-0"

LEGEND:

-  INDICATES ACCESSIBLE PATH OF TRAVEL
-  INDICATES EXTENTS OF PROJECT/ SCOPE OF WORK
-  INDICATES AREA OF HALL OF JUSTICE II 1973 ADDITION

KEY NOTES:

- THESE SHEET NOTES APPLY TO THIS SHEET ONLY
- ① (E) ACCESSIBLE ENTRY
 - ①A (E) ACCESSIBLE ENTRY @ BREEZEWAY BELOW
 - ② (E) ACCESSIBLE PATH TO (E) PARKING LOT
 - ③ (E) ACCESSIBLE CURB CUTS
 - ④ (E) SALLYPORT SECURITY FENCE

GENERAL NOTES:

1. NO SITE WORK PLANNED FOR EITHER PHASE A OR PHASE B.
2. THIS PLAN IS SHOWN FOR ACCESSIBLE PATH OF TRAVEL & SCOPE OF WORK ONLY. WALKS, RAMPS, DRIVES AND BUILDING LOCATIONS ARE APPROXIMATE.
3. NOTE: THIS PLAN SHOWS FIRST FLOOR OF HALL OF JUSTICE AND SECOND FLOOR OF JUSTICE CENTER.

SUPERIOR COURT OF CALIFORNIA,
 SOLANO COUNTY

600 UNION AVENUE
 FAIRFIELD, CA 94533

SOLANO COURTS

CONSULTANTS



ARCHITECT

N L A
nacht & lewis
 ARCHITECTS

600 Q Street
 Suite 100
 Sacramento, CA 95811
 (916) 329-4000
 www.nlarct.com

50% DESIGN DEVELOPMENT SET

INITIAL BOX

NO.	DWG BY	DATE

REVISIONS

NO.	DESCRIPTION	DATE

DATE 12/12/08

JOB NO. Y809.00

SHEET TITLE

**SITE KEY/SCOPE
 ACCESSIBILITY
 PLAN**

SHEET No.

A0.02

SHEET ___ OF ___ TOTAL