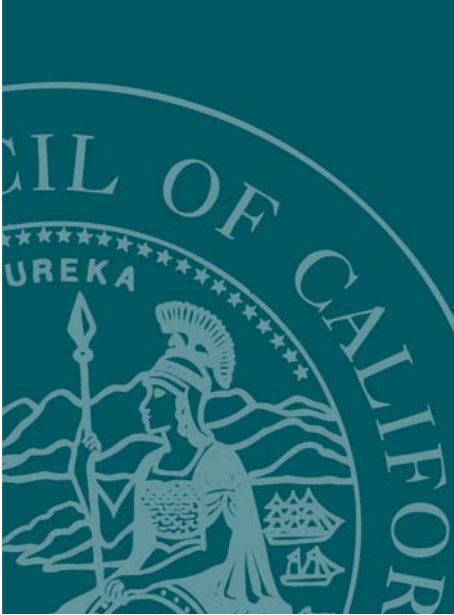


# Exhibit B

---



## Project Information & Project Plan

---

### Portola/Loyalton Courthouse

Superior Court of California, Counties of Plumas and Sierra



ADMINISTRATIVE OFFICE  
OF THE COURTS

---

OFFICE OF COURT CONSTRUCTION  
AND MANAGEMENT

## **Project Description**

### **1.0 Project Description**

The project consists of the construction of a 7,300 s.f. single courtroom courthouse on an undeveloped 1.75 acre parcel in the City of Portola, Plumas County, CA. The project will include site work consisting of tree removal, grading, utilities, paving, sidewalk, curb and gutter, landscaping, site lighting, fencing, rockery retaining walls, and other features. The building's structure is heavy timber with wood stud walls. Interior finishes include painted gypsum board, carpeting, wood paneling, tile, and fabric. Exterior finishes include metal roofing and siding, stone veneer, and wood siding. Complete electrical, mechanical and plumbing systems shall be installed. Some systems, such as A/V, security, CCTV, and telephone/data may be installed by another contractor.

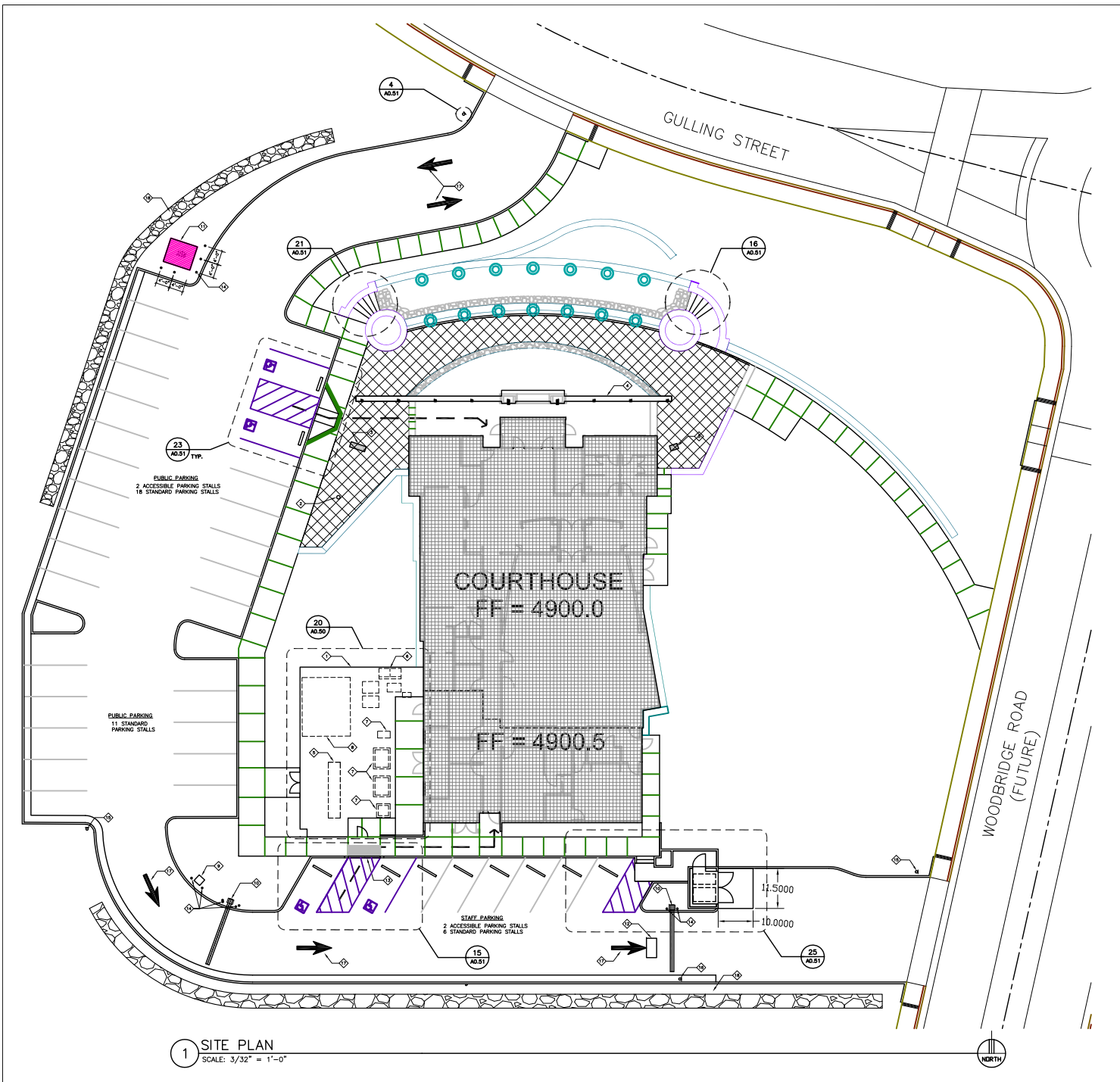
It is the intention of the AOC to begin construction by late fall, and continue through the winter. To accomplish this, site grading must be complete by a certain date in November as established by the local Regional Water Quality Control Board (RWQCB). Once grading is complete, and storm water pollution control measures are in place, and the site is otherwise prepared for the winter, work can continue. The AOC regards the completion of grading in time to meet the RWQCB cut-off date, and construction through the winter as critical to the success of the project.

### **2.0 Project Plan**

Submit your proposed Project Plan demonstrating your firm's approach to this project by indicating a clear understanding of the purpose, service, scope, and objectives of this solicitation. Special attention should be paid to the special site grading requirements, and winter construction procedures. Include approach to staffing the job, and strategy for sub-contracting.

Please see Plans and Elevations on the following pages.

ONE AND ONE-HALF INCH = ONE FOOT  
 ONE INCH = ONE FOOT  
 THREE-QUARTERS INCH = ONE FOOT  
 ONE-HALF INCH = ONE FOOT  
 ONE-QUARTER INCH = ONE FOOT  
 ONE-EIGHTH INCH = ONE FOOT  
 ONE-SIXTEENTH INCH = ONE FOOT  
 ONE INCH = TWENTY FEET



1 SITE PLAN  
 SCALE: 3/32" = 1'-0"

**KEYNOTES:**  
 THESE KEYNOTES APPLY TO THIS SHEET ONLY

- ◇ 6" HIGH FENCING USE AS A VISUAL SCREEN CHAIN-LINK WITH WOOD SLATS - REFER TO SPEC SECTION 323113
- ◇ 30' TALL FLAG POLE, REFER TO SPEC SECTION 107500
- ◇ STRUCTURAL PLASTER - REFER TO A 7.00
- ◇ COLONNAGE BASE
- ◇ PROPANE TANK - REFER TO P2.01
- ◇ MAIN SWITCHBOARD PANEL (MSB) - REFER TO E1.0
- ◇ GROUND MOUNTED MECHANICAL UNITS - REFER TO M2.01
- ◇ EMERGENCY GENERATOR (80 ALTERNATE #1) - REFER TO ELECTRICAL DRAWING A/E7.0
- ◇ VEHICULAR CARD READER - SEE 17/A0.50
- ◇ TRAFFIC ARM GATES - SEE CIVIL SITE PLAN, SHEET C2.0
- ◇ ELECTRICAL TRANSFORMER
- ◇ UNDER PAVING MAGNETIC LOOP - REFER TO C2.0
- ◇ FLUSH TRANSITION FROM AD PAVING TO SIDEWALK - SEE 10/C5.0
- ◇ BOLLARDS - SEE 12/A0.51
- ◇ \*AUTHORIZED VEHICLES ONLY BEYOND THIS POINT\* SIGN - SEE 8/A0.51
- ◇ \*EXIT ONLY\* SIGN - SEE SIGNAGE DRAWING, SHEET 14
- ◇ PAINTED TRAFFIC ARROW - SEE 27/A0.51
- ◇ ROCKERY WALL - REFER TO C2.0 & RW1

**SHEET NOTES:**  
 THESE SHEET NOTES APPLY TO THIS SHEET ONLY

1. SEE SHEET C1.0 AND C2.0 FOR DETAILED PROPERTY LINE AND TOPOGRAPHIC INFORMATION.
2. SEE SHEET C4.0 FOR UTILITY INFORMATION.
3. SEE SHEETS L1.1 THROUGH L4.1 FOR LANDSCAPING.
4. SEE SHEET E1.0 FOR SITE ELECTRICAL INFORMATION.

**LEGEND:**



SUPERIOR COURT OF CALIFORNIA  
 PLUMAS-SIERRA  
 600 SOUTH GULLING STREET  
 PORTOLA, CALIFORNIA 96122  
 ADMINISTRATIVE OFFICE OF THE COURTS  
 OFFICE OF COURT CONSTRUCTION AND MANAGEMENT

CONSULTANT

ARCHITECT  
  
**nacht & lewis**  
 ARCHITECTS  
 600 O Street  
 Suite 100  
 Sacramento, CA 95811  
 (916) 329-4000  
 www.nlarch.com

INITIAL BOX

NO.	DWG BY	DATE	REVIEWED

REVISIONS

NO.	DESCRIPTION	DATE	REV'D

DATE 6-4-08

JOB NO. Y720.00

SHEET TITLE

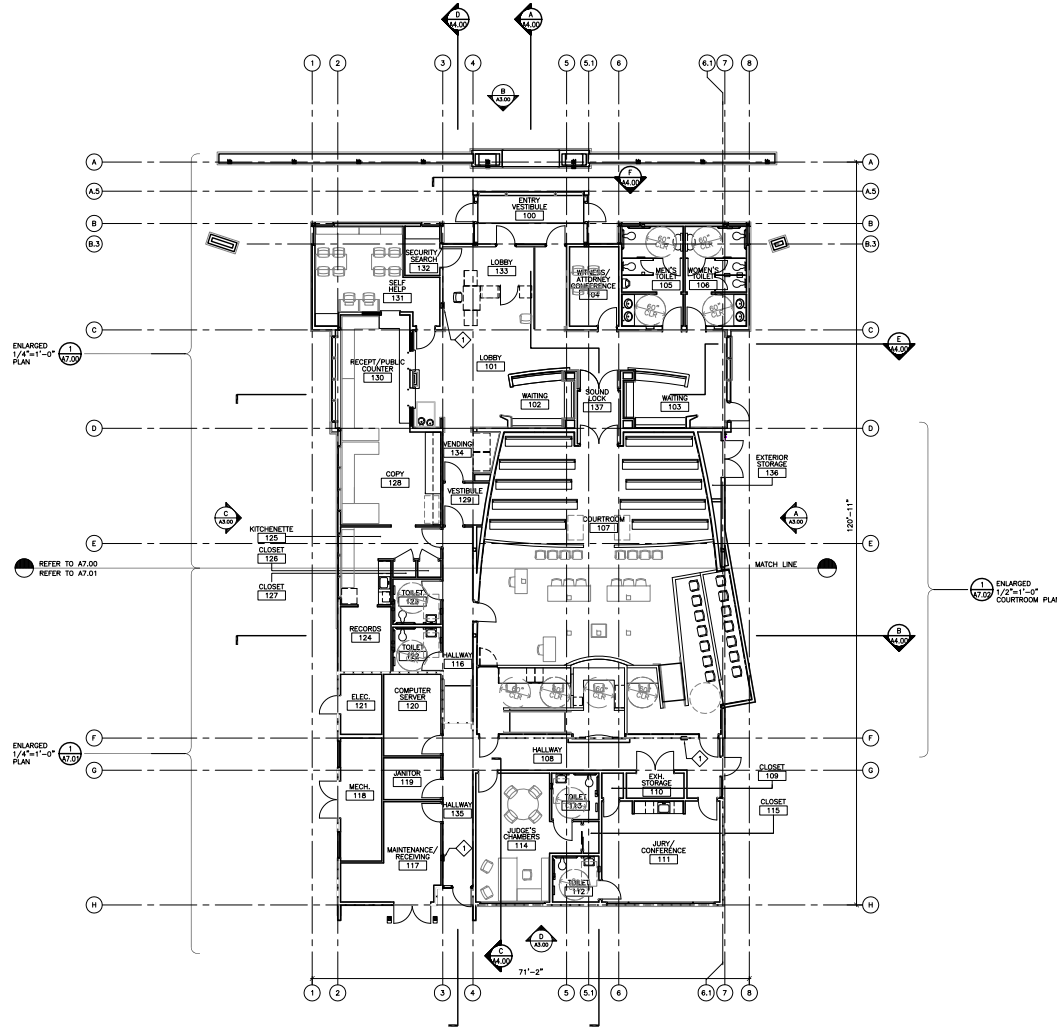
SITE PLAN

SCALE:  
 SHEET NO.

A0.00

CONSTRUCTION DOCUMENTS

ONE AND ONE-HALF INCH = ONE FOOT  
 ONE INCH = ONE FOOT  
 THREE-QUARTERS INCH = ONE FOOT  
 ONE-HALF INCH = ONE FOOT  
 ONE-QUARTER INCH = ONE FOOT  
 ONE-EIGHTH INCH = ONE FOOT  
 ONE-SIXTEENTH INCH = ONE FOOT  
 ONE INCH = TWENTY FEET



1 FLOOR PLAN  
 SCALE: 1/8" = 1'-0"

KEYNOTES:  
 THESE KEYNOTES APPLY TO THIS SHEET ONLY.

- ◆ SEMI-RECESSED, ADA COMPLIANT FIRE EXTINGUISHER CABINET AND FIRE EXTINGUISHER

SHEET NOTES:  
 THESE SHEET NOTES APPLY TO THIS SHEET ONLY.

- 1. NOT USED

GENERAL NOTES:

1. SEE A8.00 FOR PARTITION TYPES.
2. SEE A6.00 & A6.01 FOR DOOR TYPES.
3. SEE A6.10 FOR WINDOW TYPES.
4. ALL DIMENSIONS ARE TO FACE OF STUD, EDGE OF CONCRETE/C.M.U. CENTER LINE OR 1" PANEL JOINT OR TO GRID LINE U.O.N. DIMENSIONS SHOWN AROUND EXTERIOR OF BUILDING INDICATE FINISHED CONCRETE.
5. SEE A9.00 FOR FURNITURE/EQUIPMENT PLAN.
6. SEE 7/A8.27 FOR FIRE EXTINGUISHER CAB.
7. COORDINATE OPENING WIDTH WITH REQUIREMENTS OF SELECTED WINDOW/DOOR SYSTEM.

SUPERIOR COURT OF CALIFORNIA  
 PLUMAS-SIERRA  
 600 SOUTH GULLING STREET  
 PORTOLA, CALIFORNIA 96122  
 ADMINISTRATIVE OFFICE OF THE COURTS  
 OFFICE OF COURT CONSTRUCTION AND MANAGEMENT

CONSULTANT

ARCHITECT

**nacht & lewis**  
 ARCHITECTS  
 600 O Street  
 Suite 100  
 Sacramento, CA 95811  
 (916) 329-4000  
 www.nlarch.com

INITIAL BOX

NO.	DWG BY	DATE	REVIEWED

REVISIONS

NO.	DESCRIPTION	DATE	REV'D

DATE 6-4-08

JOB NO. Y720.00

SHEET TITLE

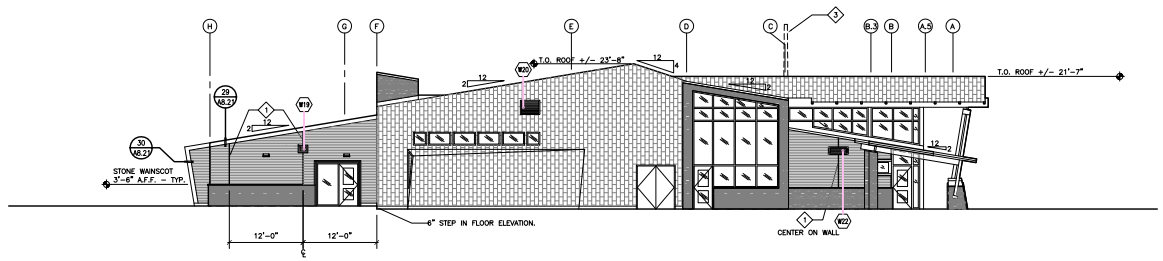
FLOOR PLAN

SCALE:  
 SHEET NO.

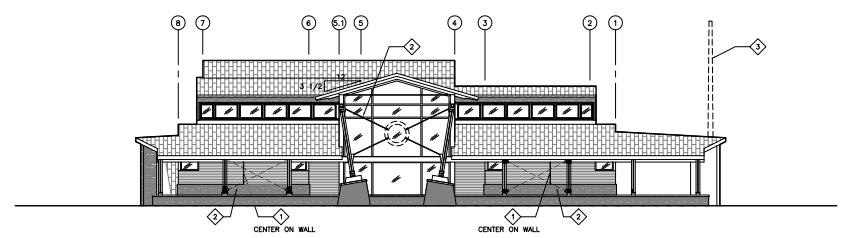
A1.00

CONSTRUCTION DOCUMENTS

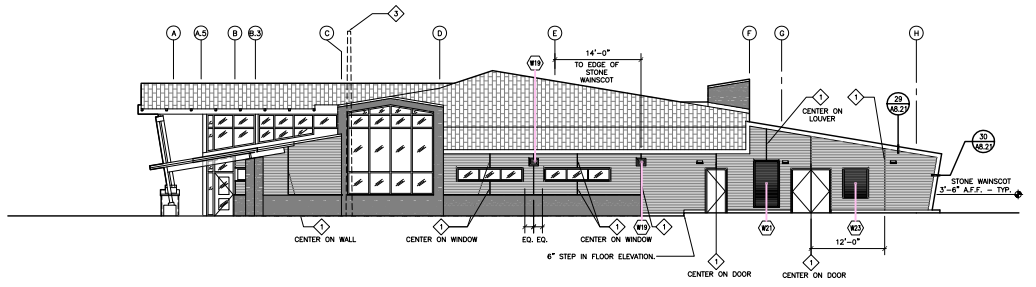
ONE AND ONE-HALF INCH = ONE FOOT  
 ONE INCH = ONE FOOT  
 THREE-QUARTERS INCH = ONE FOOT  
 ONE-HALF INCH = ONE FOOT  
 ONE-QUARTER INCH = ONE FOOT  
 ONE-EIGHTH INCH = ONE FOOT  
 ONE-SIXTEENTH INCH = ONE FOOT  
 ONE INCH = TWENTY FEET



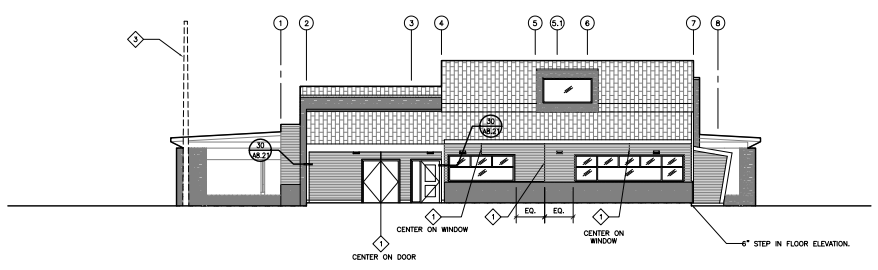
**A EAST ELEVATION**  
SCALE: 1/8" = 1'-0"



**B NORTH ELEVATION**  
SCALE: 1/8" = 1'-0"



**C WEST ELEVATION**  
SCALE: 1/8" = 1'-0"



**D SOUTH ELEVATION**  
SCALE: 1/8" = 1'-0"

**KEYNOTES:**  
THESE KEYNOTES APPLY TO THIS SHEET ONLY.

- ◇ METAL TRIM FOR DIVIDING OR TERMINATING WOOD SIDING
- ◇ STRUCTURAL THREADED ROD BRACING - SEE STRUCTURAL DWGS. FOR ADDITIONAL INFO.
- ◇ FLAG POLE

**SHEET NOTES:**  
THESE SHEET NOTES APPLY TO THIS SHEET ONLY.

1. ALL ROOFING SHALL BE ZINC STANDING SEAM METAL ROOFING U.G.N., AS DETAILED IN THE BASE BID. IF BID ALTERNATE NO. 2 IS ACCEPTED, PROVIDE PINK PAINTED METAL STANDING SEAM ROOFING IN LIEU OF ZINC STANDING SEAM ROOFING.

**LEGEND:**  
THIS LEGEND APPLIES TO ALL ELEVATION DRAWINGS U.G.N.

STONE VENER	
ZINC SIDING	
WESTERN RED CEDAR T&G SIDING	
GLAZING	

**SUPERIOR COURT OF CALIFORNIA**  
**PLUMAS-SIERRA**  
 600 SOUTH GULLING STREET  
 PORTOLA, CALIFORNIA 96122  
 ADMINISTRATIVE OFFICE OF THE COURTS  
 OFFICE OF COURT CONSTRUCTION AND MANAGEMENT

CONSULTANT

ARCHITECT

**nacht & lewis**  
ARCHITECTS  
600 O Street  
Suite 100  
Sacramento, CA 95811  
(916) 329-4000  
www.nlarch.com

INITIAL BOX

NO.	DWG BY	DATE	REVIEWED

REVISIONS

NO.	DESCRIPTION	DATE	REV'D

DATE 6-4-08

JOB NO. Y720.00

SHEET TITLE

ELEVATIONS

SCALE:  
SHEET NO.

A3.00

CONSTRUCTION DOCUMENTS