

# Attachment B

## **Building Information**

---

### New San Andreas Courthouse

Superior Court of California, County of Calaveras



ADMINISTRATIVE OFFICE  
OF THE COURTS

---

OFFICE OF COURT CONSTRUCTION  
AND MANAGEMENT

## **1.0 Project Description**

The new Courthouse for the Superior Court of California, Calaveras County, will be situated in San Andreas. The courthouse is sited on 6.9 acres and is accessed via Mountain Ranch Road/Government Center Drive. The project is located on undeveloped woodland knoll adjacent to the existing county center.

This facility will consist of four multi-use courtrooms, along with support spaces, and totals approximately 46,466 square feet. The courthouse will be two stories in height with an under-building secure parking area and a secure corridor connecting to a tunnel. This tunnel will connect to the adjacent County jail project. The structure is a steel moment frame system on spread footings, complying with the 'progressive collapse' design guidelines.

Exterior finishes include aluminum and glass curtain wall, veneer stone and high pressure laminate panels, as well as metal panels. The envelope is designed as a rain screen system. The focal point of the New San Andreas Courthouse is its two-story entry and the open grand stair that connects the public activities on the first floor with the courtrooms and waiting areas on the second floor. The open well allows daylight to penetrate down to the first floor via the large skylight above.

The main entry, staff entry, public counters, court clerks, family court services, administrative services, the sallyport, and jury assembly areas are located on the first floor. Security screening occurs within the main entry. The four courtrooms (including support spaces such as witness rooms, in-custody holding spaces, jury deliberation rooms), and Judges' chambers are located on the second floor. Associated with the courtrooms are in-Custody holding spaces that will house defendants for court appearances. There is a secure defendant transfer area and a secure elevator adjacent each courtroom. The secure elevator connects to the secure basement circulation.

Complete electrical, mechanical, plumbing, AV, access control, CCTV and security systems shall be installed. Some systems, such as the IT infrastructure (telephone/data) and network systems may be installed by another contractor. The project is designed to achieve LEED Silver, including a partial green roof.

It is the intention of the AOC to begin construction in late spring 2011, and continue through for 18 months. The project will be under construction concurrently with the adjacent to the County jail project and off-site utility and roadway improvements. The County will provide initial site vehicular access via Government Center Road. Coordination with off-site improvement (County) contractor will be required to maintain site access throughout construction.

The AOC may enlist the services of a Construction Manager to assist during the construction of the Courthouse in schedule evaluation, document management, issue tracking, meeting facilitation, and other tasks.

The AOC's Estimate of the Value of Construction of this Project is approximately \$28,000,000. The project may include additive and/or deductive alternates. Plans, sections and elevations can be found in Attachment B, Building Information.

## **2.0 Selected Drawings**

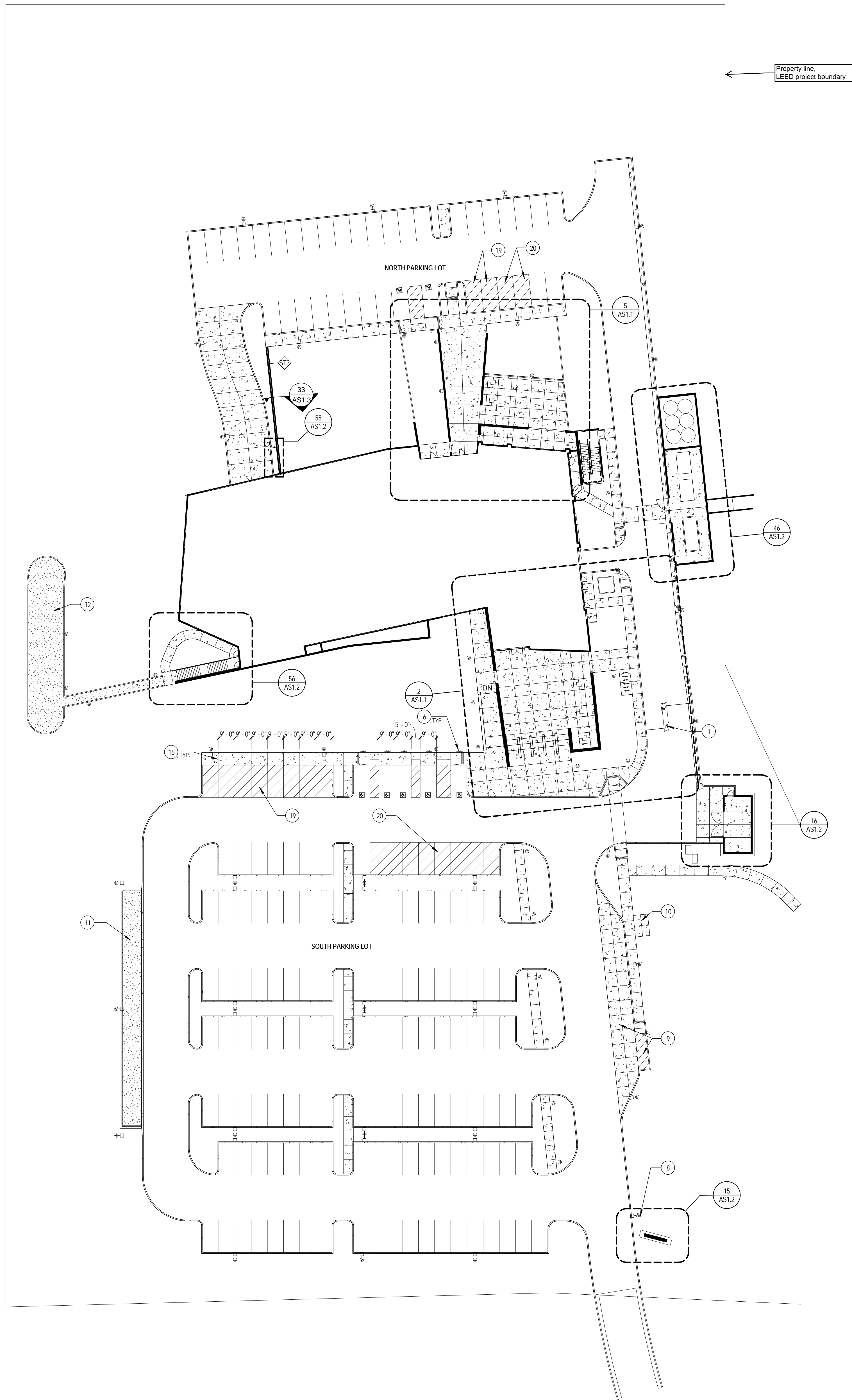
Please see the below listed Plans and Elevations:

AS1.1	Site Plan
C2.0	Civil Demolition Plan
A1.0	Basement Plan
A1.1	First Floor Plan
A1.2	Second Floor Plan
A4.1	Roof Plan
A5.1	Exterior Elevations
A5.2	Exterior Elevations
A6.1	Building Sections
A6.2	Building Sections

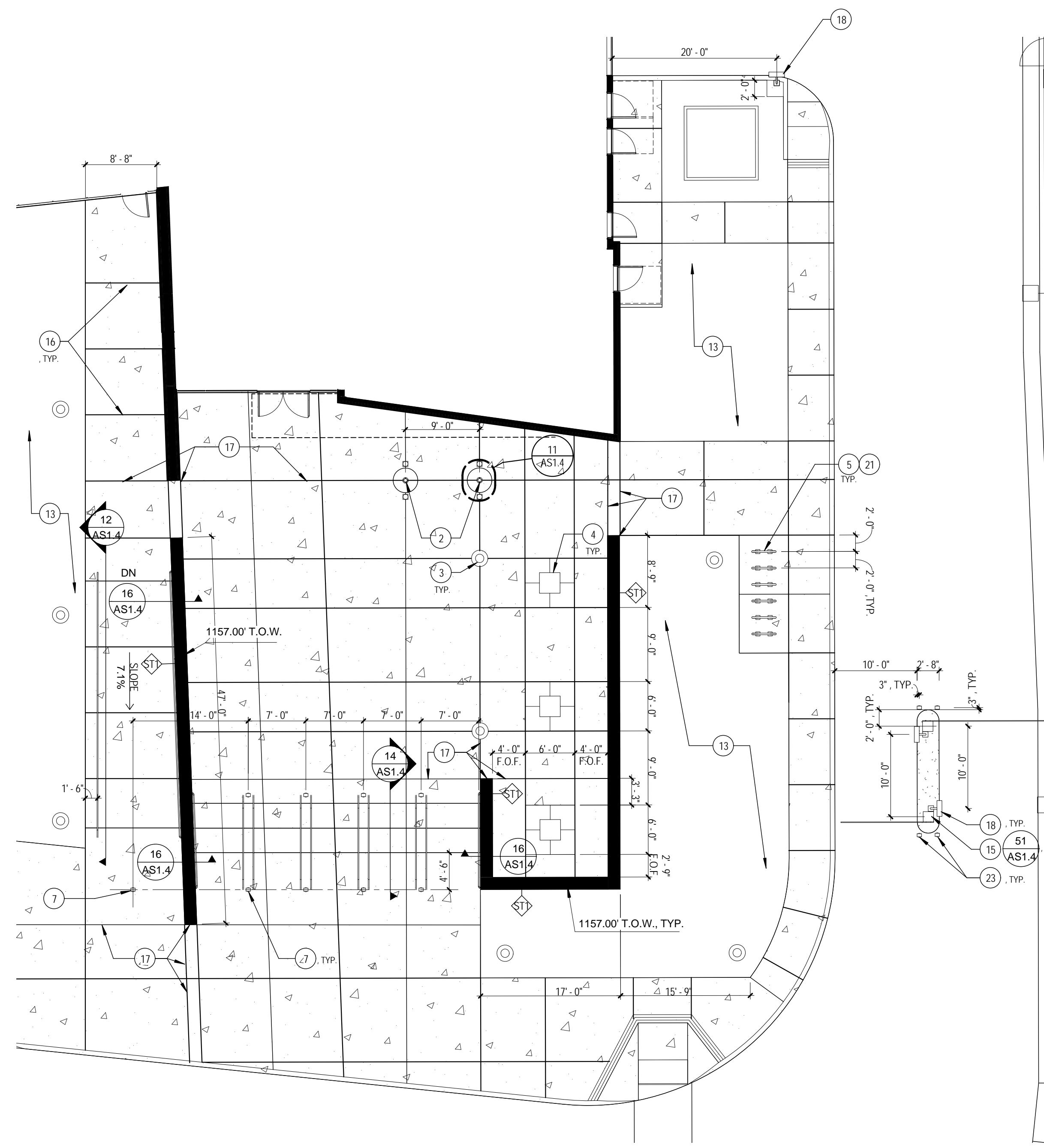
Two exterior and two interior renderings are also included.

C:\Reviews\5-05-10-00\_Locust\_AR\_2008.rvt  
10/4/2010 4:28:00 PM

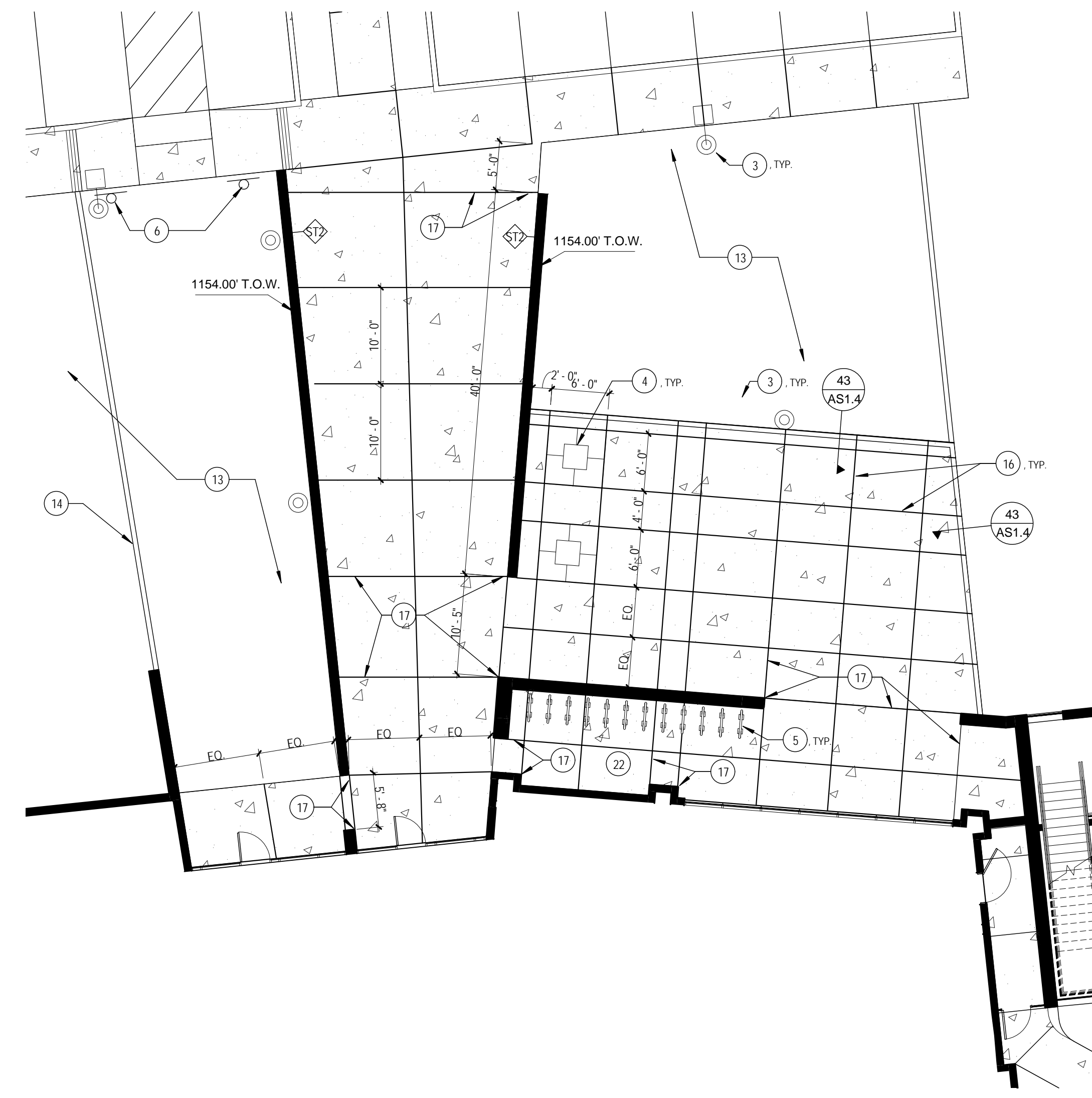
**1 ARCHITECTURAL SITE PLAN**  
SCALE: 1" = 30'-0"



**2 ENLARGED SITE PLAN - SOUTH ENTRY**  
SCALE: 1" = 10'-0"



**3 ENLARGED SITE PLAN - NORTH ENTRY**  
SCALE: 1" = 10'-0"



**LEGEND NOTES**

- 1 SECURITY GATES
- 2 FLAGPOLE
- 3 LIGHT POLE
- 4 TREE WELL
- 5 BICYCLE RACK
- 6 ACCESSIBLE PARKING SIGN
- 7 LIGHTED BOLLARD
- 8 ACCESSIBLE PARKING ENTRANCE SIGN ATTACHED TO LIGHT POLE
- 9 BUS STOP/PASSENGER DROP OFF
- 10 BUS STOP PAD
- 11 PRESS PARKING AREA
- 12 SAFE DISPERSAL AREA
- 13 LANDSCAPE AREA
- 14 MOW CURB
- 15 SECURITY CONTROL GATE
- 16 CONTROL JOINT 8" O.C. U.N.O.
- 17 ALIGN CONTROL JOINT TO END OF WALL
- 18 CARD READER/GATE CONTROLLER
- 19 PREFERRED PARKING - L.E.E.D. NC SS4.3 - GREEN STRIPING 45 DEGREES @ 4' O.C.
- 20 PREFERRED PARKING - L.E.E.D. NC SS4.4 - GREEN STRIPING 45 DEGREES @ 4' O.C.
- 21 VISITOR BICYCLE PARKING
- 22 EMPLOYEE BICYCLE PARKING
- 23 BOLLARD

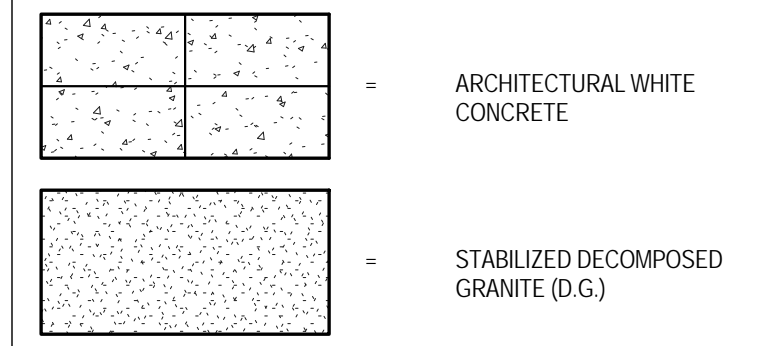
**PARKING CALCULATIONS**

SECURE PARKING AREA (BASEMENT LEVEL)	
TOTAL SPACES	8
REQUIRED ACCESSIBLE SPACES	1
TOTAL ACCESSIBLE SPACES PROVIDED	1
VAN ACCESSIBLE SPACES PROVIDED	1
NORTH PARKING LOT	
TOTAL SPACES	38
REQUIRED ACCESSIBLE SPACES	2
TOTAL ACCESSIBLE SPACES PROVIDED	2
VAN ACCESSIBLE SPACES PROVIDED	1
SOUTH PARKING LOT	
TOTAL SPACES	139
REQUIRED ACCESSIBLE SPACES	5
TOTAL ACCESSIBLE SPACES PROVIDED	5
VAN ACCESSIBLE SPACES PROVIDED	1
TOTAL PARKING SPACES	185
TOTAL PARKING SPACES REQUIRED FOR PHASE I	185

**GENERAL NOTES**

A. SEE C3.0 FOR CONTINUATION OF SITE DIMENSIONS.

**MATERIAL LEGEND**



**SITE WALL SCHEDULE**

WALL TYPE	OVERALL WIDTH	DETAIL
ST1	1' - 6"	34/AS1.4
ST2	1' - 0"	34/AS1.4
ST3	1' - 4"	33/AS1.3

**L.E.E.D. CALCULATIONS**

L.E.E.D. NC SS4.2 CASE 1	
BUILDING USERS:	
TRANSITORY USERS	200
FULL TIME EMPLOYEES	75
75 X 5% =	15 BICYCLES
TOTAL BICYCLE SPACES PROVIDED	18
75 X 12% =	375 SHOWERS
TOTAL SHOWERS PROVIDED	1
L.E.E.D. NC SS4.3 OPTION 1	
5% OF PARKING =	10 SPACES
L.E.E.D. NC SS4.4 OPTION 1	
CARPPOOL/VANPOOL =	10 SPACES

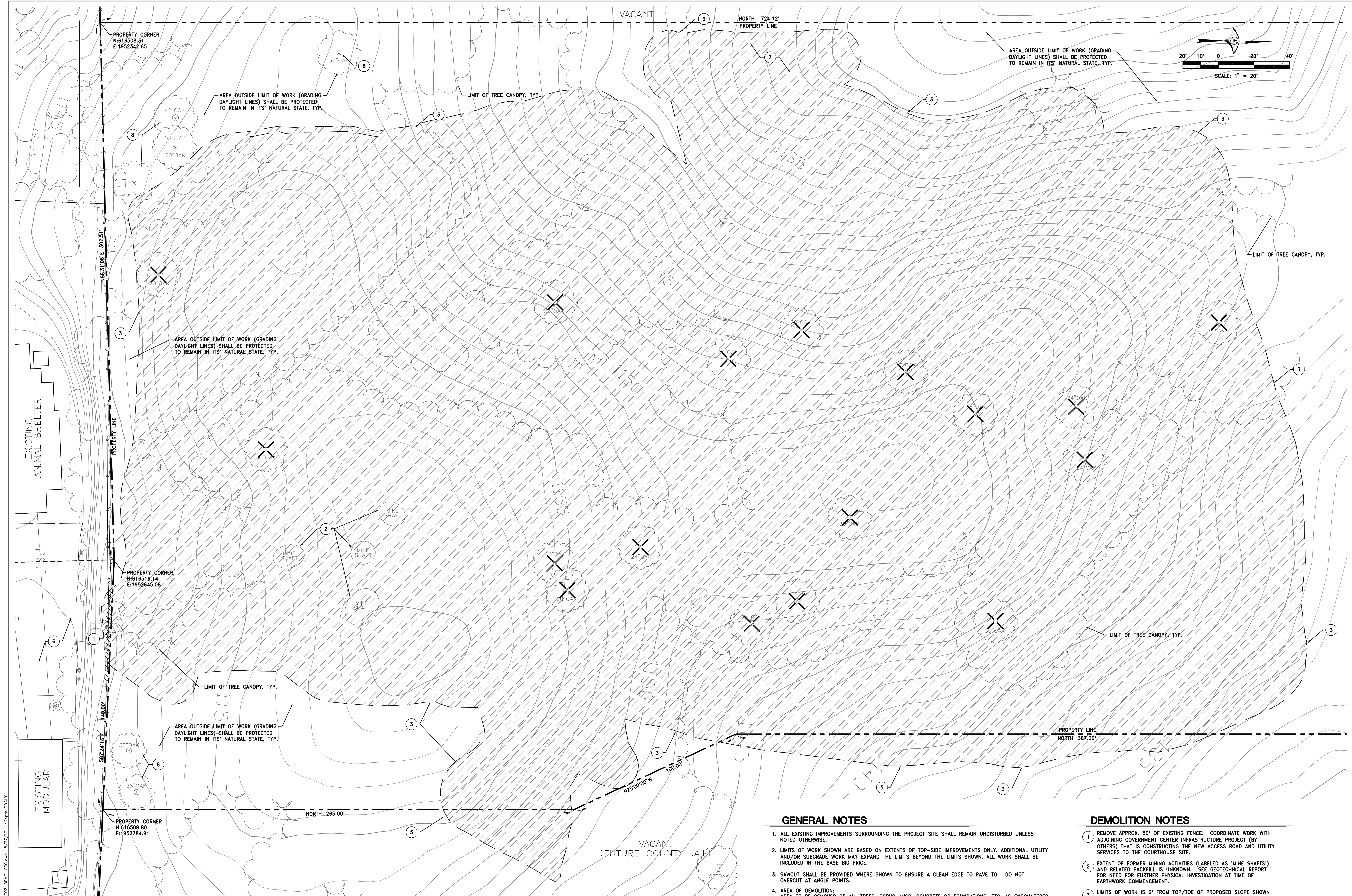
90% CONSTRUCTION DOCUMENTS

ARCHITECTURAL SITE PLAN  
Superior Court of California  
County of Calaveras - New San Andreas Court

AS1.1  
7/2/09/08  
8/30/2010  
Revisions

**DLR Group**  
Architecture Engineering Planning Interiors  
© 2010 DLR Group Inc. of California, a California corporation. ALL RIGHTS RESERVED





BENCHMARK & CONTROL	
BENCHMARK: BRASS CAP STAMPED D909, USC&GS 1957	ELEV. 1134.60
BRASS CAP SET IN ROCK OUTCROP 11 FEET FROM AN EXISTING FENCE ON THE SOUTH SIDE OF MURRAY CREEK ROAD, LOCATED APPROXIMATELY 600 FEET DUE NORTH OF THE PROJECT'S NORTH PROPERTY LINE. CONSTRUCTION SURVEYOR TO CONTACT THE SURVEYOR WHO CONDUCTED THE TOPOGRAPHY SURVEY (JEFFRIES ENGINEERING, INC., TOM JEFFRIES, AT 209/754-1853) TO COORDINATE WHETHER ANY MORE LOCAL TEMPORARY BENCHMARKS MAY HAVE BEEN SET.	
HORIZONTAL CONTROL: ALL PROPERTY CORNERS ARE TO BE SET BY JEFFRIES ENGINEERING, INC. AS PART OF PARCEL MAP MONUMENTATION PRIOR TO BEGINNING OF CONSTRUCTION.	
BASIS OF BEARINGS: ALL BEARINGS AND DISTANCES SHOWN ON THESE PLANS ARE PER THE SURVEY PROVIDED BY JEFFRIES ENGINEERING, INC. DATED JULY 22, 2009.	

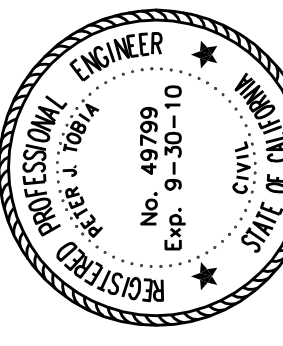
LEGEND	
	SAWCUT LINE
	LIMIT OF WORK
	AREA OF DEMOLITION (SEE ALSO GENERAL NOTES THIS SHEET.)
	OAK TREE REMOVAL (SEE ALSO GENERAL NOTE 5 ON THIS SHEET.)
	LINEAL DEMOLITION ITEM AS SHOWN AND/OR NOTED IN PLAN.

**GENERAL NOTES**

- ALL EXISTING IMPROVEMENTS SURROUNDING THE PROJECT SITE SHALL REMAIN UNDISTURBED UNLESS NOTED OTHERWISE.
- LIMITS OF WORK SHOWN ARE BASED ON EXTENTS OF TOP-SIDE IMPROVEMENTS ONLY. ADDITIONAL UTILITY AND/OR SUBGRADE WORK MAY EXPAND THE LIMITS BEYOND THE LIMITS SHOWN. ALL WORK SHALL BE INCLUDED IN THE BASE BID PRICE.
- SAWCUT SHALL BE PROVIDED WHERE SHOWN TO ENSURE A CLEAN EDGE TO PAVE TO. DO NOT OVERCUT AT ANGLE POINTS.
- AREA OF DEMOLITION:  
AREA TO BE REMOVED OF ALL TREES, SCRUB, MISC. CONCRETE OR FOUNDATIONS, ETC. AS ENCOUNTERED.
- NOTE THAT ONLY OAK TREES HAVE BEEN IDENTIFIED ON THE PLAN (DRIP LINES NOT ACTUAL SIZE) AND THOSE TO BE REMOVED ARE SPECIFICALLY INDICATED WITH AN 'X' SYMBOL PER THE LEGEND. THERE ARE SUBSTANTIALLY MORE TREES ON THE SITE THAT CREATE THE CANOPY LINES SHOWN. ALL TREES WITHIN THE LIMIT OF WORK SHALL BE REMOVED, AND ALL TREES OUTSIDE THE LIMIT OF WORK SHALL BE PROTECTED. CONTRACTOR TO MAKE HIS OWN DETERMINATION AS TO THE AMOUNT OF TREE REMOVAL REQUIRED AND INCLUDE SUCH IN THE BID. CONTRACTOR TO DISPOSE OF ANY TREES REMOVED DURING GRADING BY MEANS OTHER THAN LANDFILL.
- THE UNDERGROUND UTILITIES SHOWN HAVE BEEN LOCATED FROM FIELD SURVEY INFORMATION AND EXISTING DRAWINGS PROVIDED TO WOOD RODGERS. WOOD RODGERS, INC. MAKES NO GUARANTEE THAT THE UNDERGROUND UTILITIES COMPRISE ALL SUCH UTILITIES IN THE AREA EITHER IN SERVICE OR ABANDONED OR THAT THE UNDERGROUND UTILITIES SHOWN ARE IN THE EXACT LOCATION INDICATED. WOOD RODGERS, INC. HAS NOT PHYSICALLY LOCATED THE UNDERGROUND UTILITIES.
- OWNER SHALL BE GIVEN THE OPTION TO SALVAGE ANY MATERIAL SHOWN TO BE DEMOLISHED. SALVAGED MATERIALS SHALL BE STOCKPILED AT A LOCATION ON SITE.

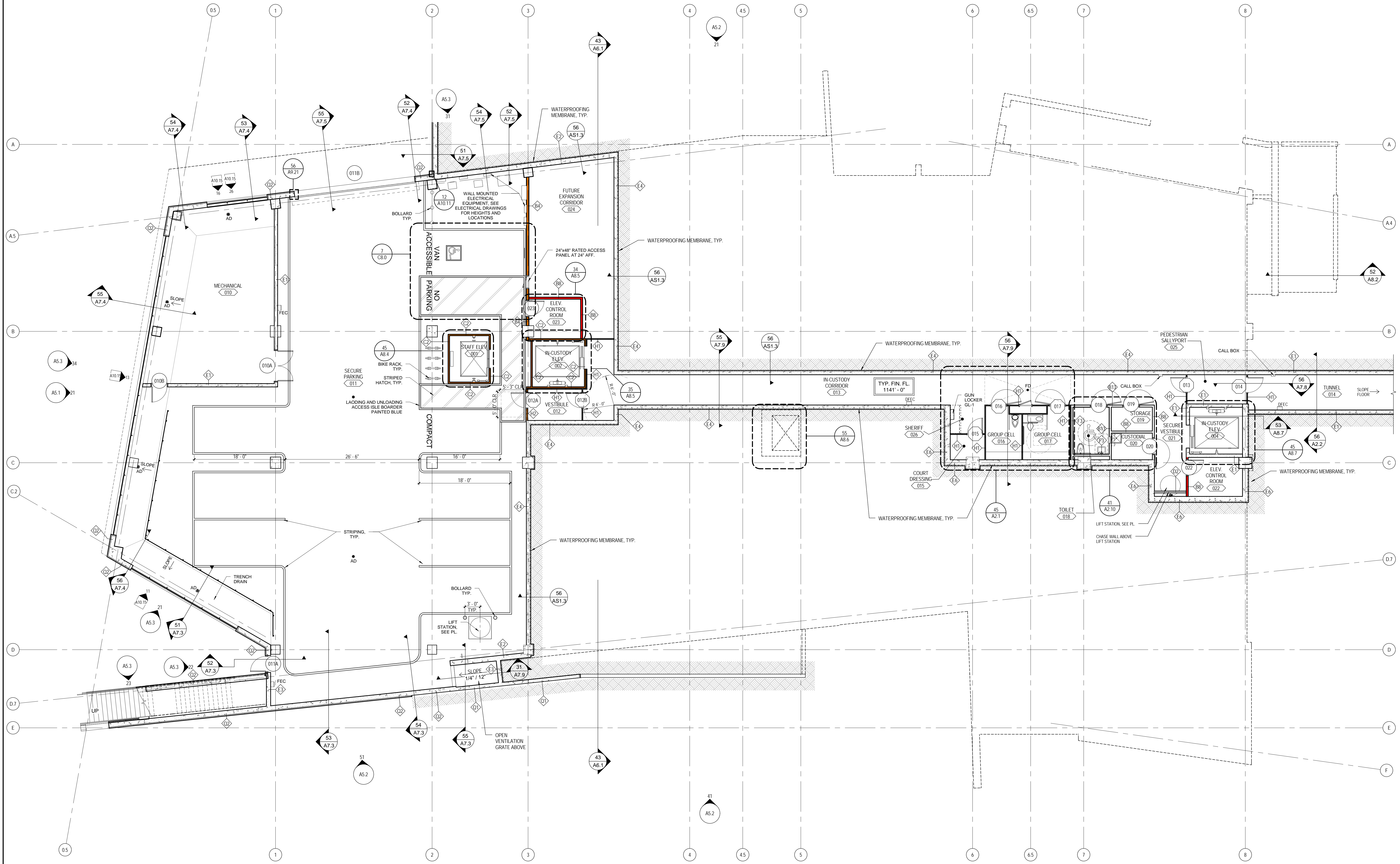
**DEMOLITION NOTES**

- REMOVE APPROX. 50' OF EXISTING FENCE. COORDINATE WORK WITH ADJOINING GOVERNMENT CENTER INFRASTRUCTURE PROJECT (BY OTHERS) THAT IS CONSTRUCTING THE NEW ACCESS ROAD AND UTILITY SERVICES TO THE COURTHOUSE SITE.
- EXTENT OF FORMER MINING ACTIVITIES (LABELED AS 'MINE SHAFTS') AND RELATED BACKFILL IS UNKNOWN. SEE GEOTECHNICAL REPORT FOR NEED FOR FURTHER PHYSICAL INVESTIGATION AT TIME OF EARTHWORK COMMENCEMENT.
- LIMITS OF WORK IS 3' FROM TOP/TOE OF PROPOSED SLOPE SHOWN ON GRADING PLAN, TYP.
- NOT USED.
- LIMITS OF WORK EXTEND ONTO JAIL SITE AS PART OF COORDINATED GRADING EFFORT BETWEEN PROJECTS.
- IT IS ASSUMED THIS AREA WILL BE DEMO'D & ROUGH GRADED AS PART OF INFRASTRUCTURE PROJECT (BY OTHERS) PRIOR TO COMMENCEMENT OF COURTHOUSE PROJECT.
- LOCATION OF TREES WITHIN PROPOSED AREA OF SAFE DISPERSAL (SEE PLANS) IS UNKNOWN. TREES THAT DO NOT CONFORM TO THE FINISH GRADES SHOWN ON THE GRADING PLAN SHALL BE REMOVED.
- EXISTING OAK TREE TO REMAIN.



A:\Jobs\B402 - Calaveras - Court\Center\Courthouse-04\Civil\Eng\CCO2-DEMOL-DEMOL-CCC.dwg 8/27/10 11:24am DAAK





1  
A1.0  
BASEMENT FLOOR PLAN  
SCALE: 1/8" = 1'-0"



BASEMENT FLOOR PLAN  
Superior Court of California  
County of Calaveras - New San Andreas Court

A1.0  
7/2/08/08  
8/30/2010  
Revisions

C:\Revit\5-08106-00\_Locall\_AR\_2008.rvt  
10/4/2010 3:55:47 PM





1 GROUND FLOOR PLAN  
 A1.1 SCALE: 1/8" = 1'-0"



GROUND FLOOR PLAN  
 Superior Court of California  
 County of Calaveras - New San Andreas Court

A1.1  
 75-08106  
 8/30/2010  
 R00000

C:\Revit\5-08106-00\_Locals\_AR\_2008.rvt  
 10/4/2010 3:56:26 PM





1 SECOND FLOOR PLAN

A1.2 SCALE: 1/8" = 1'-0"



SECOND FLOOR PLAN  
 Superior Court of California  
 County of Calaveras - New San Andreas Court

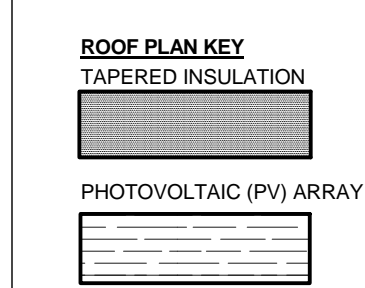
A1.2  
 75-08106  
 8/30/2010  
 Revision

C:\Revit\5-08106-00\_Locals\_AR\_2008.rvt  
 10/4/2010 3:57:21 PM

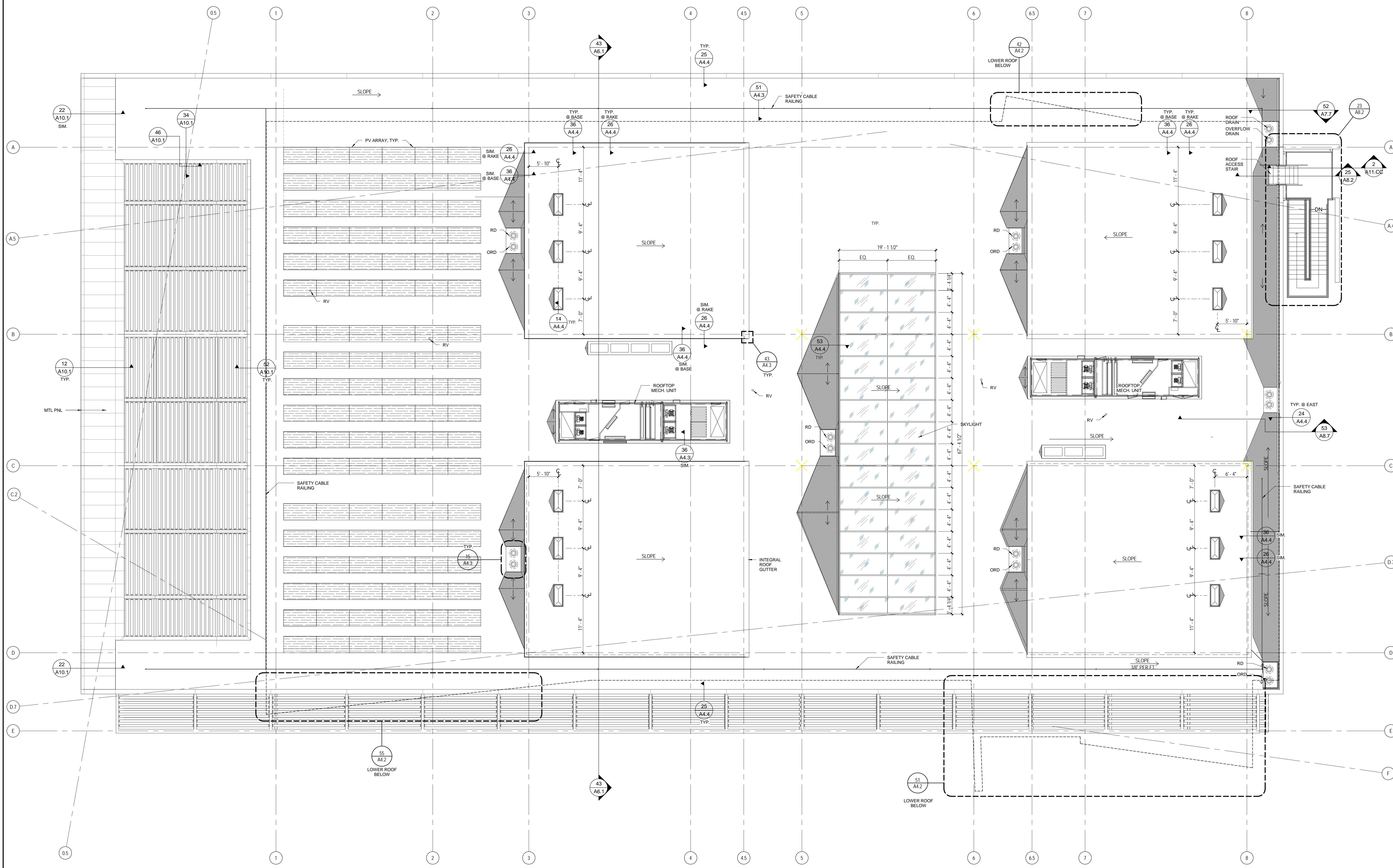


**LEGEND NOTES**

LEGEND NOTES ARE COMMON TO ALL SHEETS. SOME NOTES MAY NOT APPLY TO THIS SHEET.



90%  
CONSTRUCTION  
DOCUMENTS



**1 ROOF PLAN**  
SCALE: 1/8" = 1'-0"



**ROOF PLAN**  
Superior Court of California  
County of Calaveras - New San Andreas Court

**A4.1**  
75-09106  
8/30/2010  
Revisions

C:\Revit\5-08106-00\_Locals\_AR\_2008.rvt  
10/4/2010 4:01:28 PM

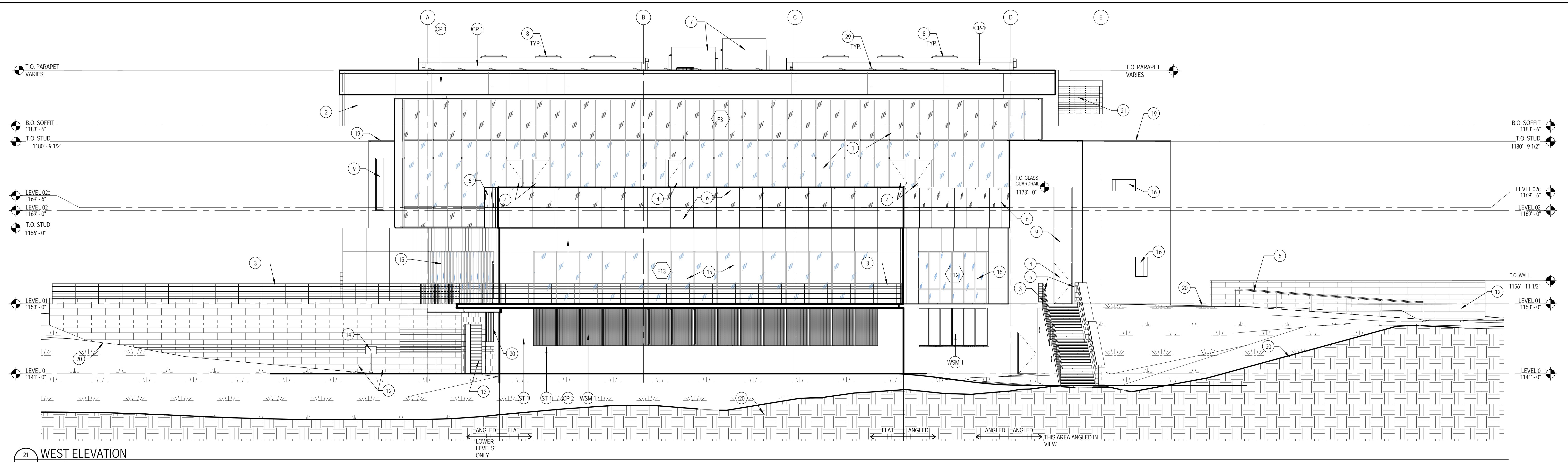


**LEGEND NOTES**

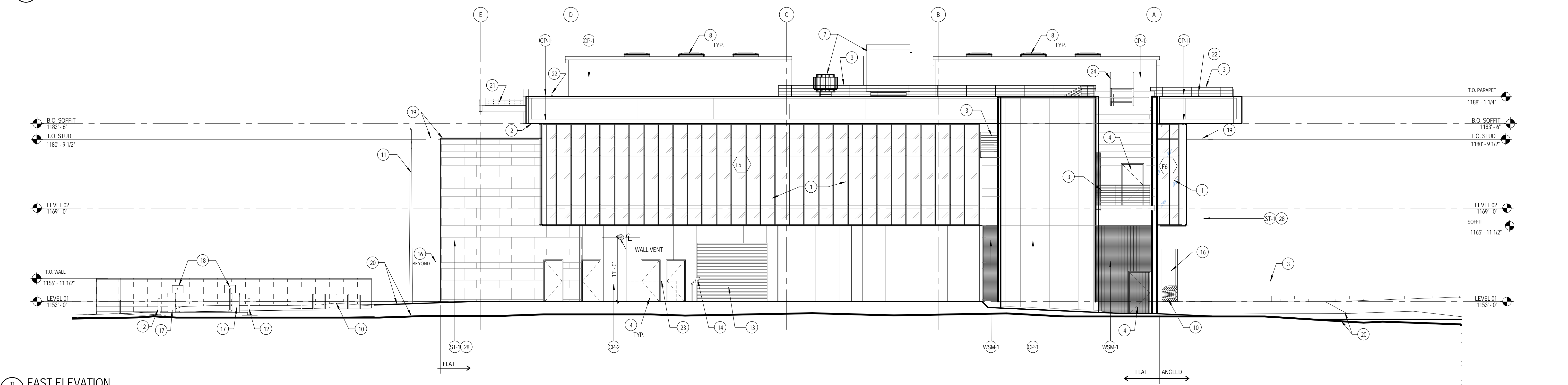
- 1 ALUMINUM CURTAINWALL SYSTEM - SEE FRAME ELEVATION FOR GLAZING TYPES
- 2 METAL PANEL SOFFIT
- 3 GUARDRAIL
- 4 DOOR AS SCHEDULED
- 5 HANDRAIL
- 6 GLASS GUARDRAIL
- 7 MECHANICAL EQUIPMENT - SEE MECHANICAL DRAWINGS
- 8 SKYLIGHT
- 9 WINDOW AS SCHEDULED
- 10 BIKE RACK
- 11 FLAG POLE
- 12 BOLLARD
- 13 OVERHEAD COILING DOOR
- 14 SECURITY DOOR ACCESS PEDESTAL
- 15 ALUMINUM STOREFRONT SYSTEM - SEE FRAME ELEVATIONS FOR GLAZING TYPES
- 16 WALL OPENING
- 17 GATE OPERATOR
- 18 SECURITY GATE CONTROL PEDESTAL
- 19 STONE COPING
- 20 FINISH GRADE
- 21 FIXED SHADE DEVICE
- 22 SAFETY CABLE RAIL - SEE ROOF PLAN
- 23 ELECTRICAL TRANSFORMER - SHOWN HIDDEN FOR CLARITY
- 24 ROOF ACCESS STAIR BEYOND
- 25 SKYLIGHT PERIMETER RAIL
- 26 ROOF AND OVERFLOW DRAIN
- 27 ROOF CRICKET
- 28 STONE VENEER - FOR PATTERN SEE DETAIL "A" ON SHEET A5.3
- 29 PV PANELS - SEE ROOF PLAN
- 30 MECHANICAL LOUVER - BEHIND METAL SECURITY MESH

**ABBREVIATIONS**

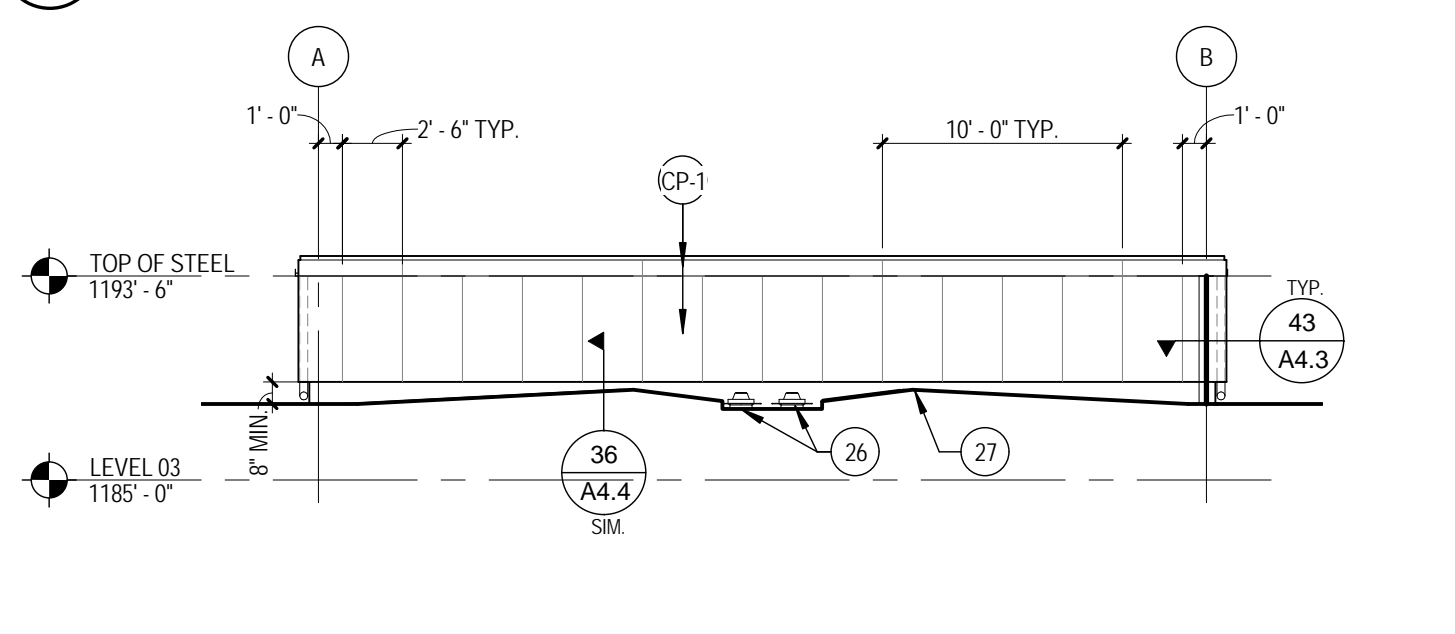
- NOTE: SEE A0.1 FOR ADDITIONAL INFORMATION
- EXTERIOR MATERIALS:**
- AL ALUMINUM
  - C EXPOSED CONCRETE
  - CP COMPOSITE WALL PANELS
  - EP EPOXY PAINT
  - GR GREEN ROOF
  - P PAINT
  - PV CAST STONE
  - S STUCCO
  - SM SHEET METAL
  - ST STONE
  - SSTL STAINLESS STEEL
  - STN STAIN
  - WSM WIRE SECURITY MESH



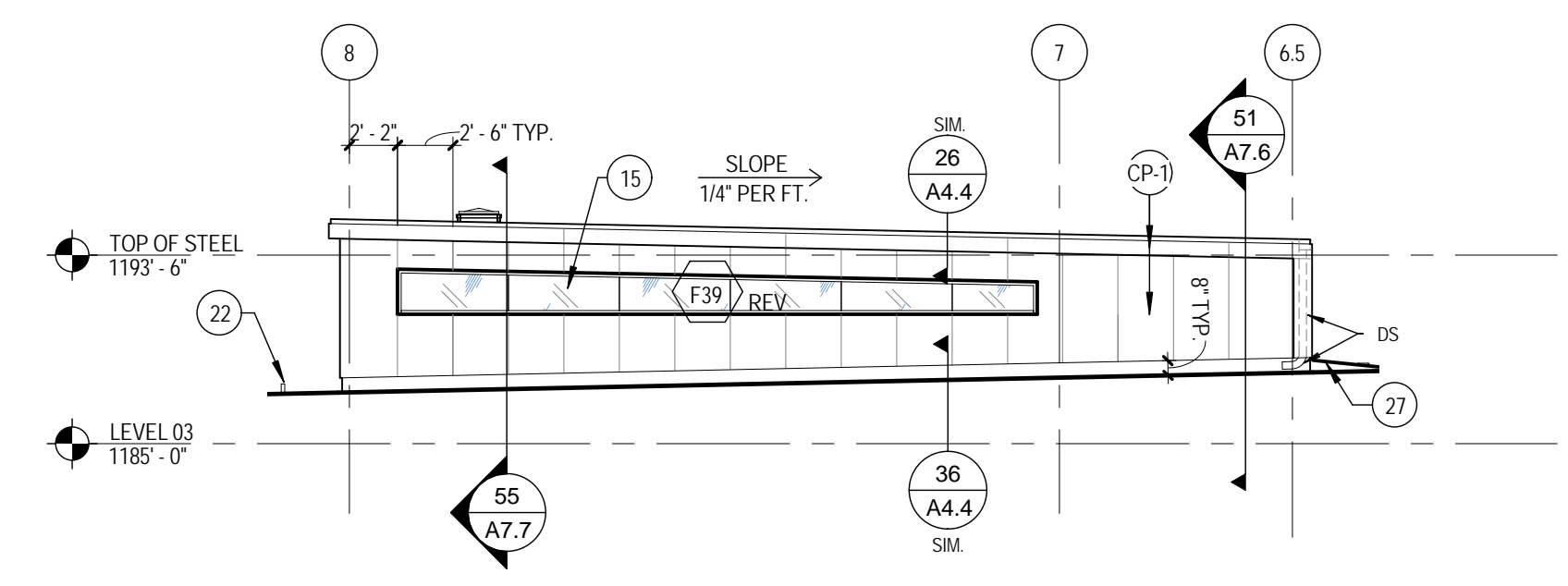
27 WEST ELEVATION  
A5.1 SCALE: 1/8" = 1'-0"



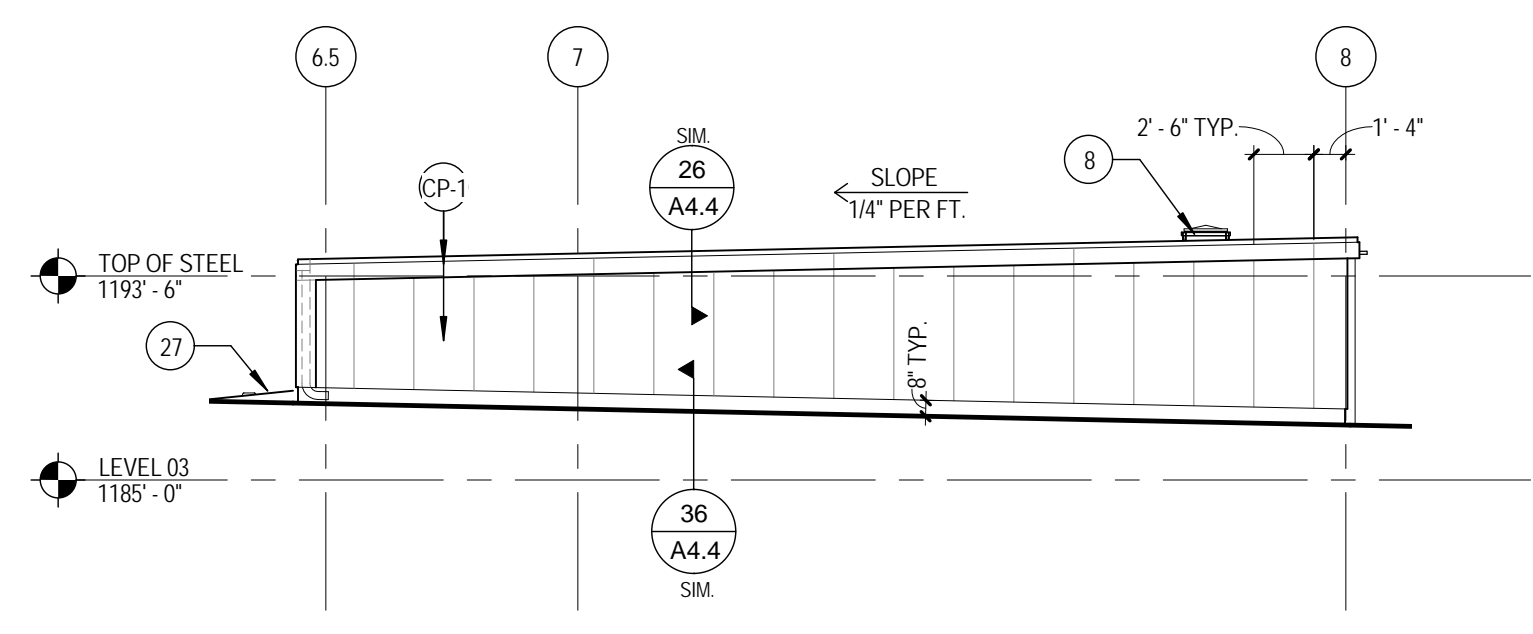
31 EAST ELEVATION  
A5.1 SCALE: 1/8" = 1'-0"



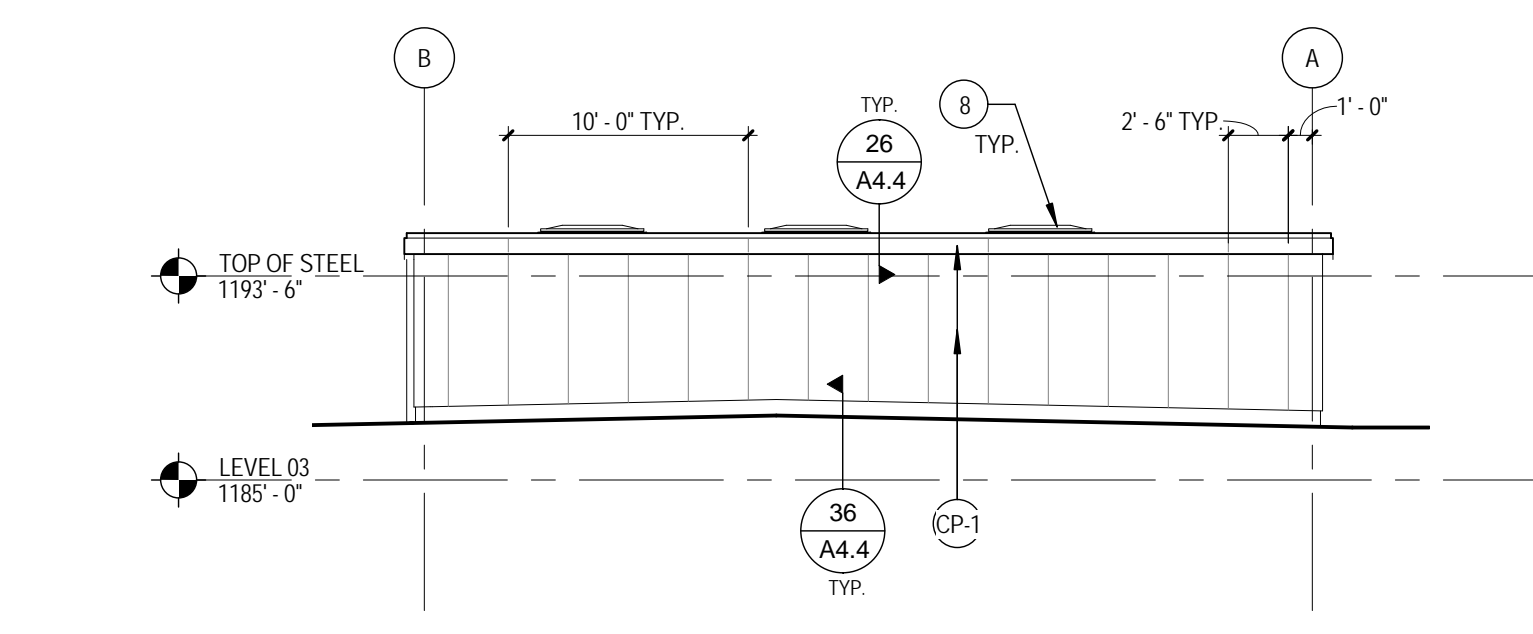
41 WEST ELEVATION - CLERESTORY COURT 234  
A5.1 SCALE: 1/8" = 1'-0"



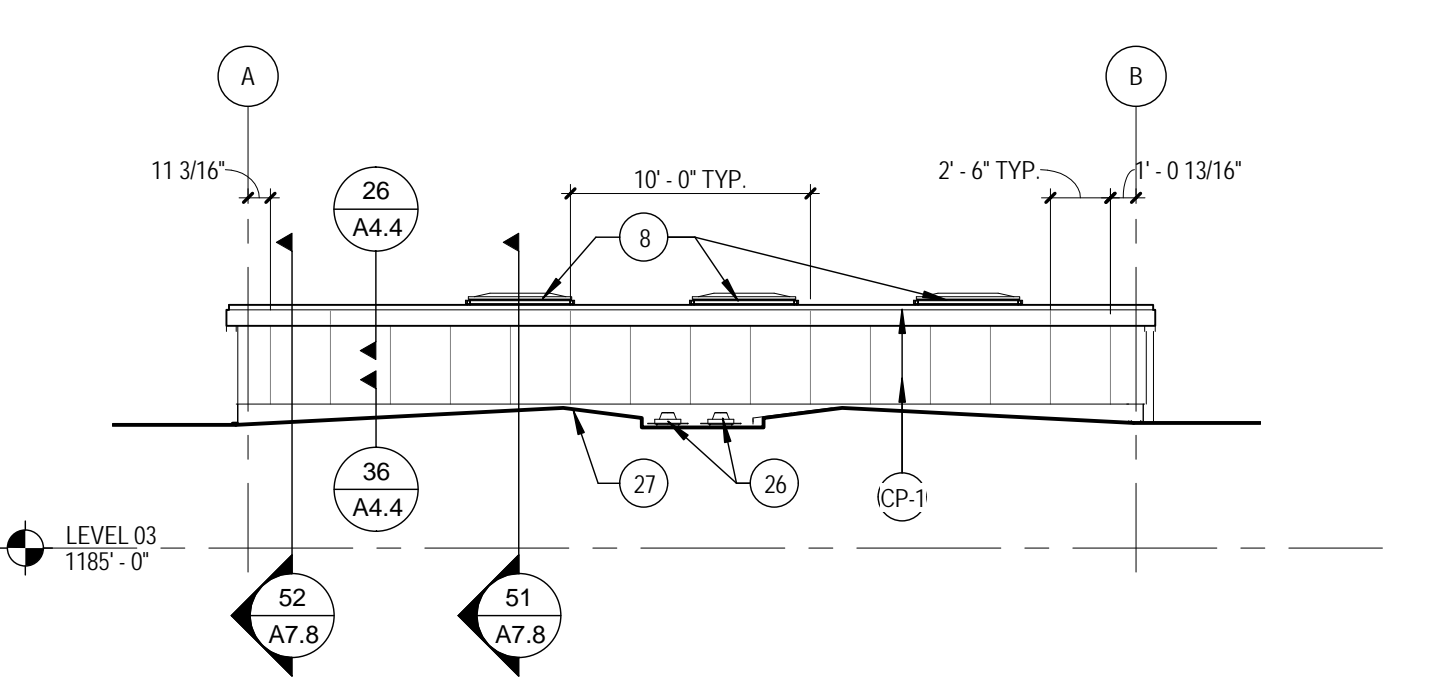
42 NORTH ELEVATION, CLERESTORY COURT 234 / 204  
A5.1 SCALE: 1/8" = 1'-0"



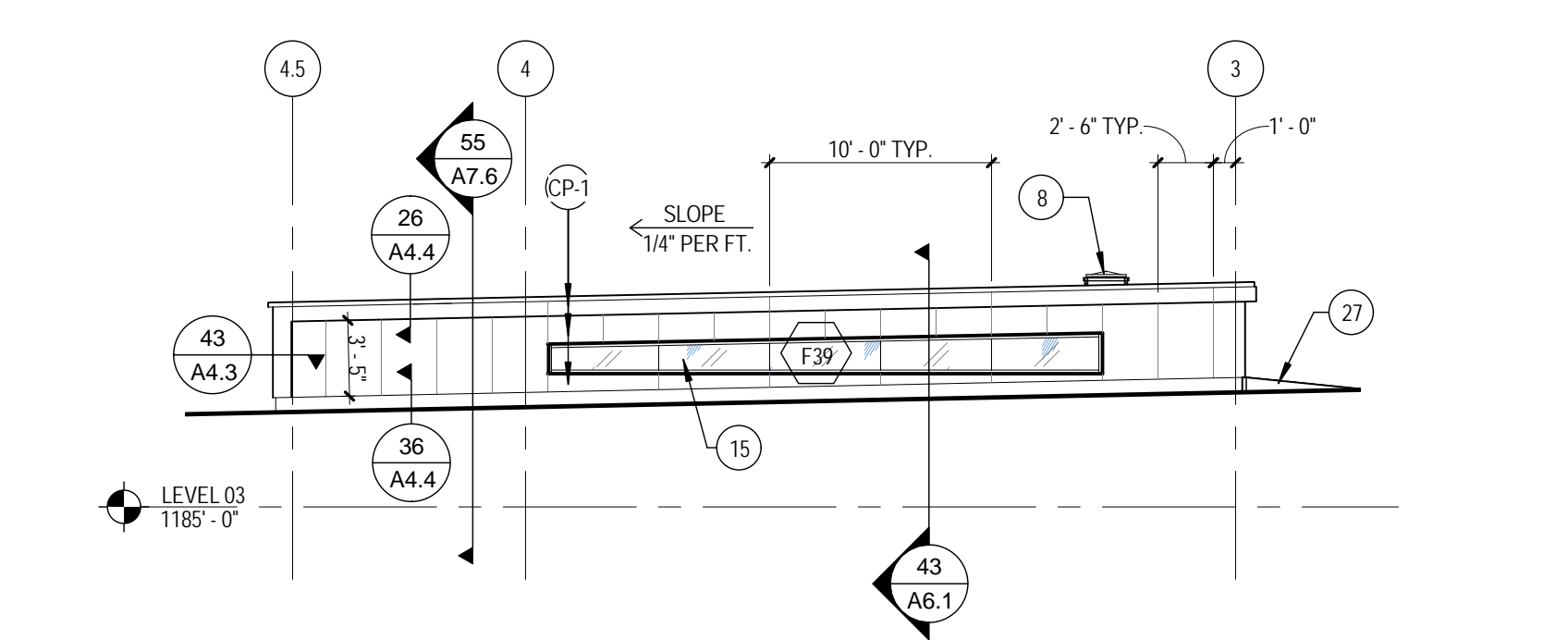
43 SOUTH ELEVATION, CLERESTORY COURT 234 / 204  
A5.1 SCALE: 1/8" = 1'-0"



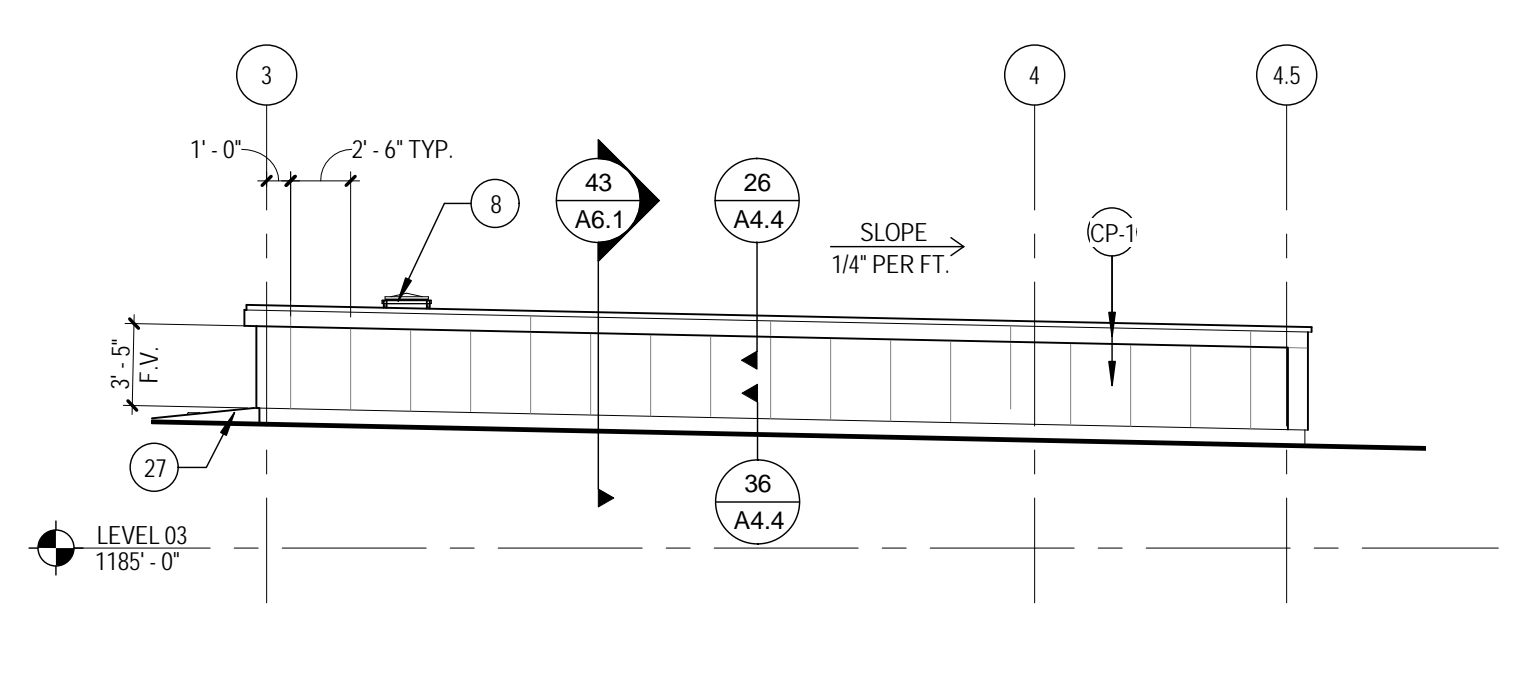
44 EAST ELEVATION, CLERESTORY COURT 234 / 204  
A5.1 SCALE: 1/8" = 1'-0"



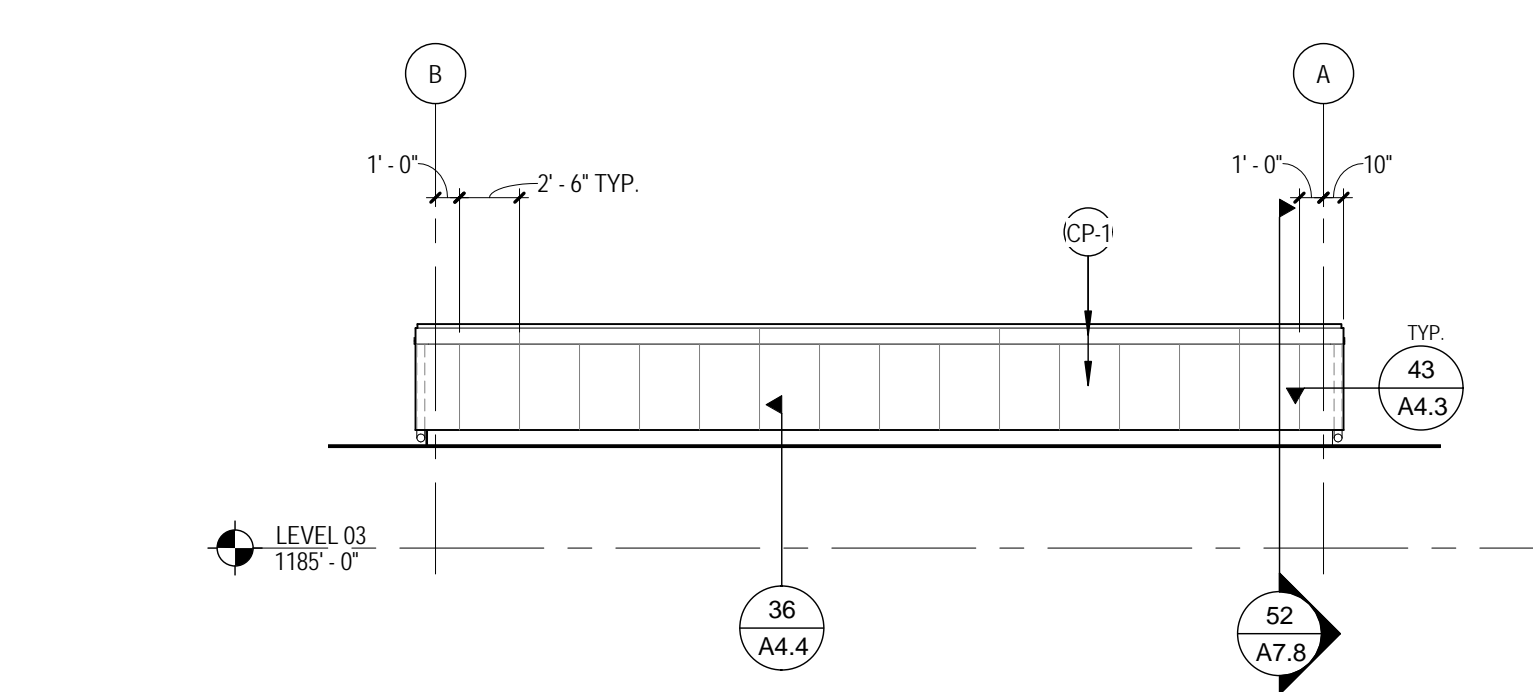
51 WEST ELEVATION, CLERESTORY COURT 228 / 215  
A5.1 SCALE: 1/8" = 1'-0"



52 NORTH ELEVATION, CLERESTORY COURT 228 / 215  
A5.1 SCALE: 1/8" = 1'-0"

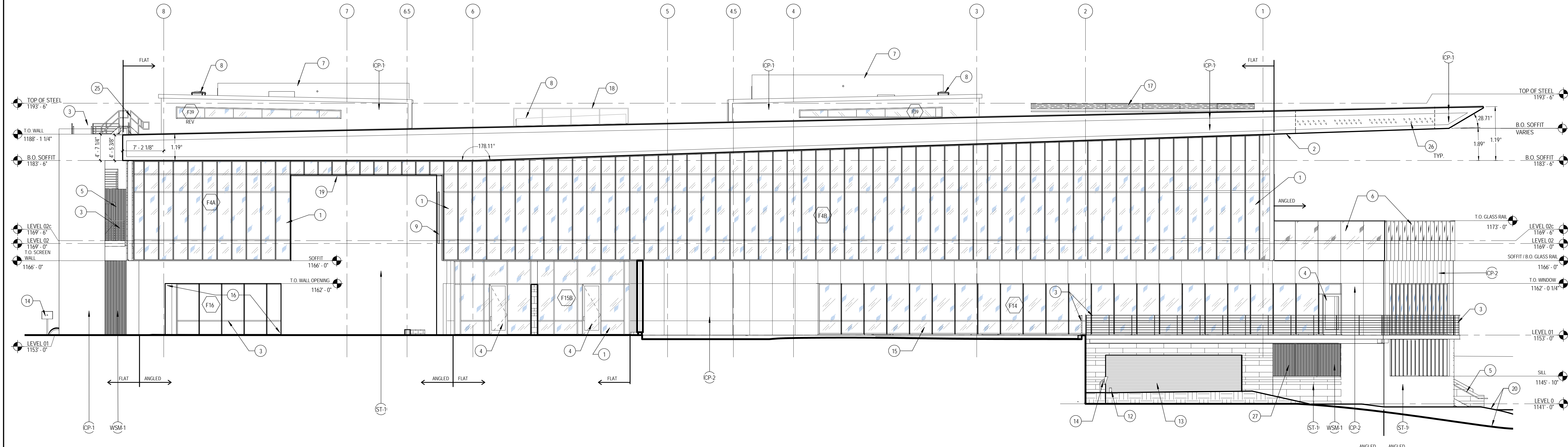


53 SOUTH ELEVATION, CLERESTORY COURT 228 / 215  
A5.1 SCALE: 1/8" = 1'-0"

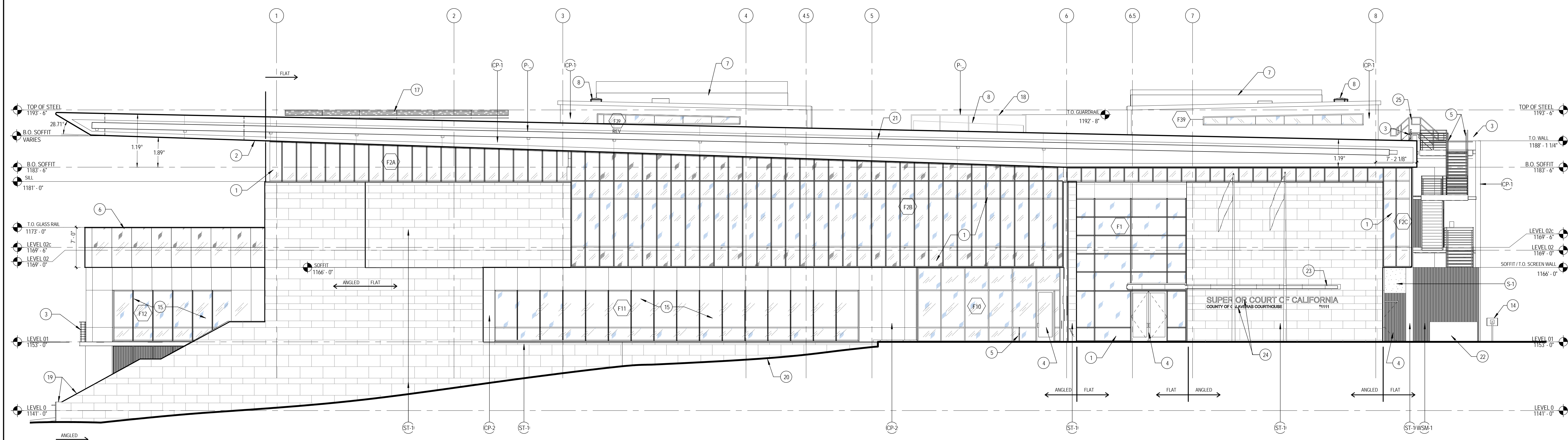


54 EAST ELEVATION, CLERESTORY COURT 228 / 215  
A5.1 SCALE: 1/8" = 1'-0"

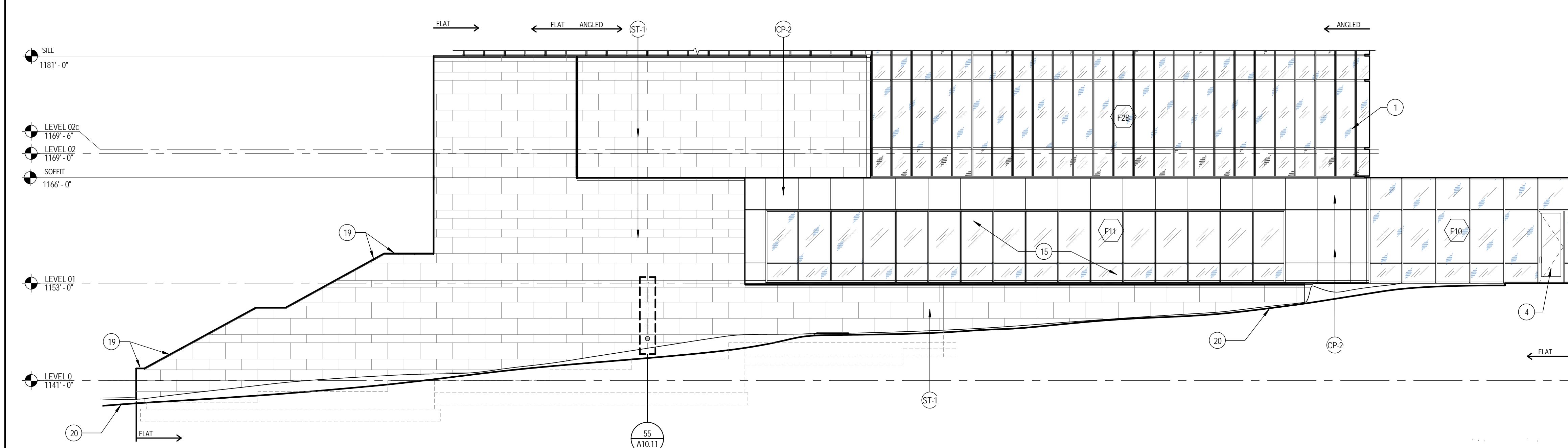




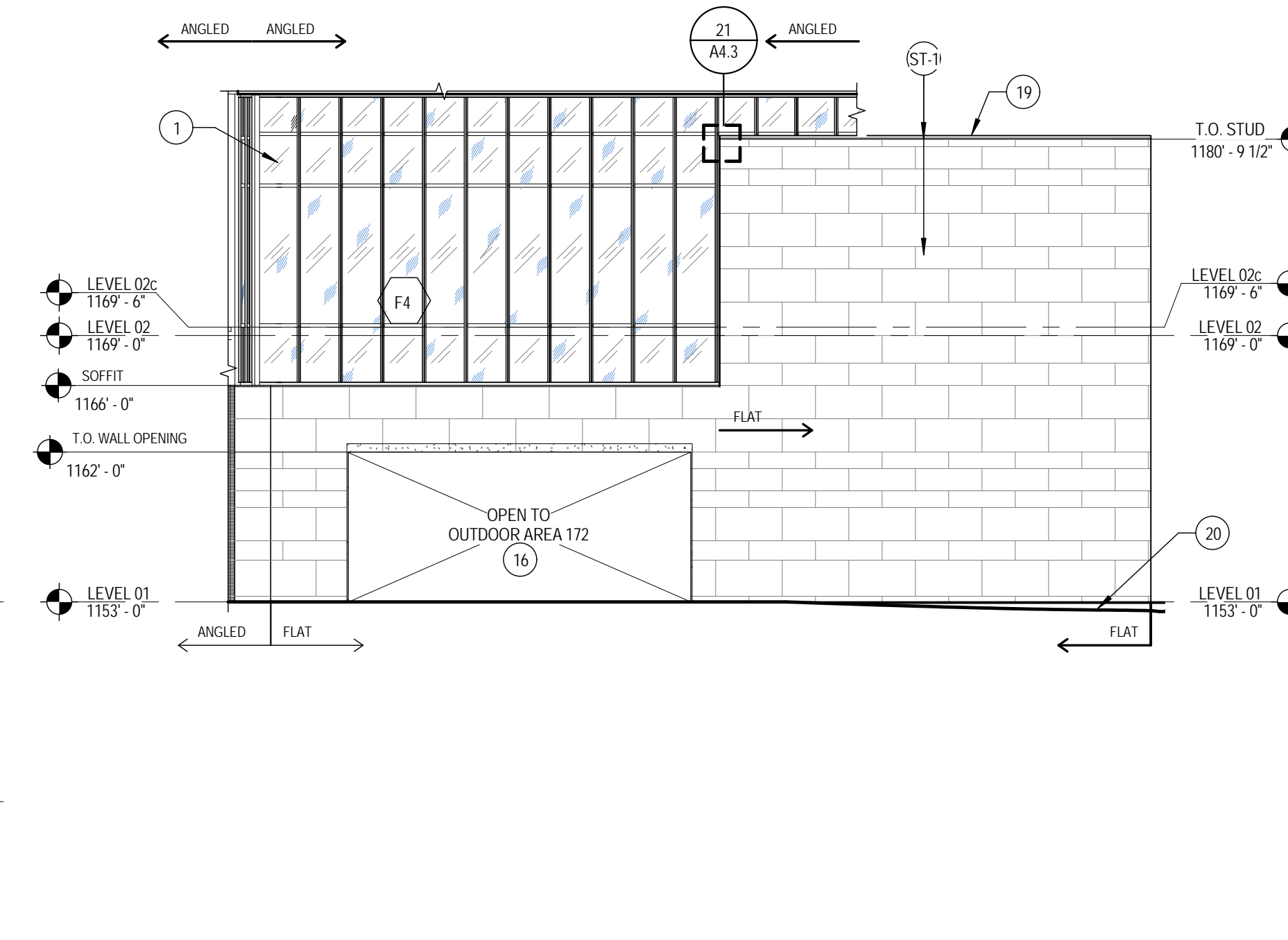
**21 NORTH ELEVATION**  
 A5.2 SCALE: 1/8" = 1'-0"



**41 SOUTH ELEVATION**  
 A5.2 SCALE: 1/8" = 1'-0"



**51 SOUTH ELEVATION, ANGLED SOUTHWEST CORNER**  
 A5.2 SCALE: 1/8" = 1'-0"



**55 NORTH ELEVATION AT JURY ASSEMBLY GARDEN**  
 A5.2 SCALE: 1/8" = 1'-0"

**LEGEND NOTES**

- 1 ALUMINUM CURTAINWALL SYSTEM - SEE A9.3, A9.4 FRAME ELEVATION FOR GLAZING TYPES
- 2 METAL PANEL SOFFIT
- 3 GUARDRAIL
- 4 DOOR AS SCHEDULED
- 5 HANDRAIL
- 6 GLASS GUARDRAIL
- 7 MECHANICAL EQUIPMENT - SEE MECHANICAL DRAWINGS
- 8 SKYLIGHT
- 9 WINDOW AS SCHEDULED
- 10 BIKE RACK
- 11 FLAG POLE
- 12 BOLLARD
- 13 OVERHEAD COILING DOOR
- 14 SECURITY DOOR ACCESS PEDESTAL
- 15 ALUMINUM STOREFRONT SYSTEM - SEE FRAME ELEVATIONS FOR GLAZING TYPES
- 16 WALL OPENING
- 17 PV PANELS - SEE ROOF PLAN
- 18 SKYLIGHT PERIMETER RAIL
- 19 STONE CORNING
- 20 FINISH GRADE
- 21 FIXED SHADE DEVICE
- 22 ELECTRICAL TRANSFORMER - SEE ELECTRICAL DRAWINGS
- 23 CANOPY
- 24 BUILDING SIGNAGE
- 25 ROOF ACCESS STAIR BEYOND
- 26 12' ONE-PIECE AEROFOL LOUVER, BEYOND
- 27 MECHANICAL LOUVER - BEHIND METAL SECURITY MESH

**ABBREVIATIONS**

NOTE: SEE A0.1 FOR ADDITIONAL INFORMATION

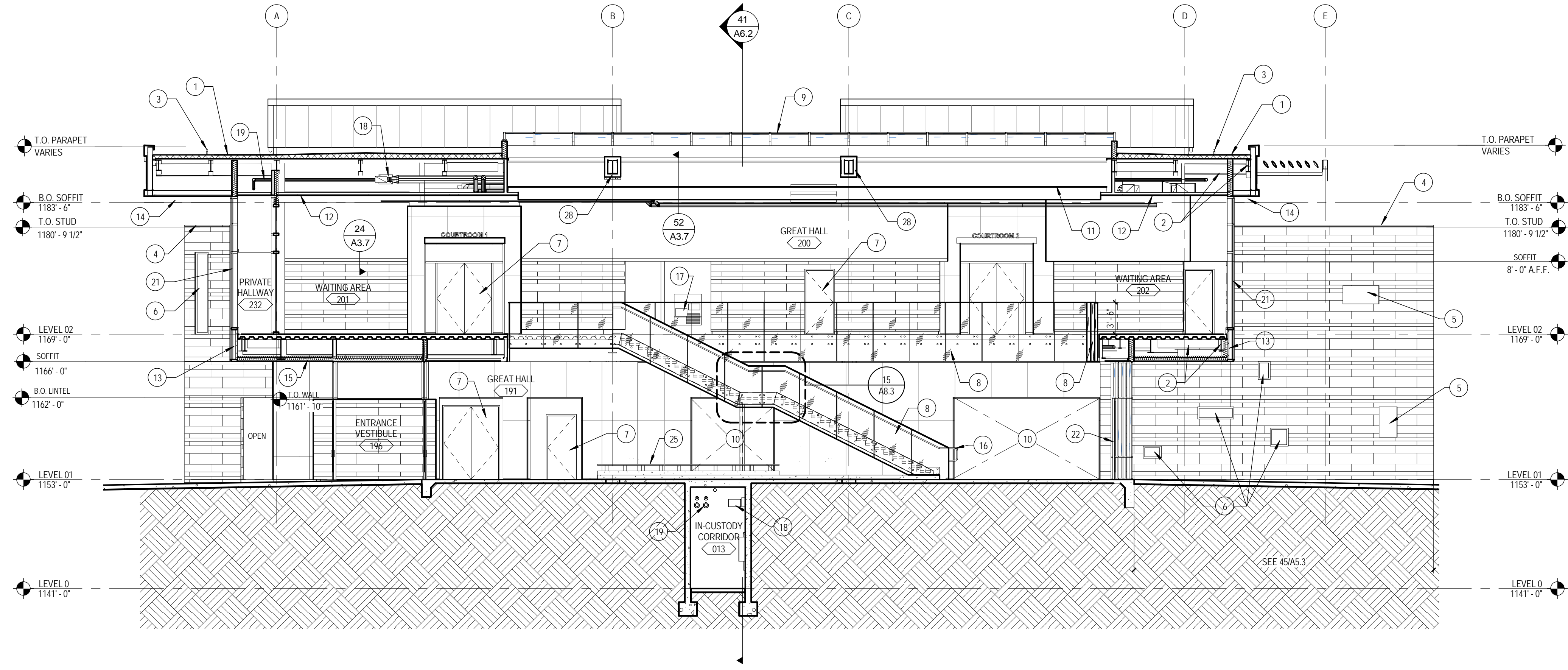
**EXTERIOR MATERIALS:**

AL	ALUMINUM
C	EXPOSED CONCRETE
CP	COMPOSITE WALL PANELS
EP	EPoxy PAINT
GR	GREEN ROOF
P	PAINT
PW	CAST STONE
S	STUCCO
SM	SHEET METAL
ST	STONE
SSTL	STAINLESS STEEL
STM	STAIN
WSM	WIRE SECURITY MESH

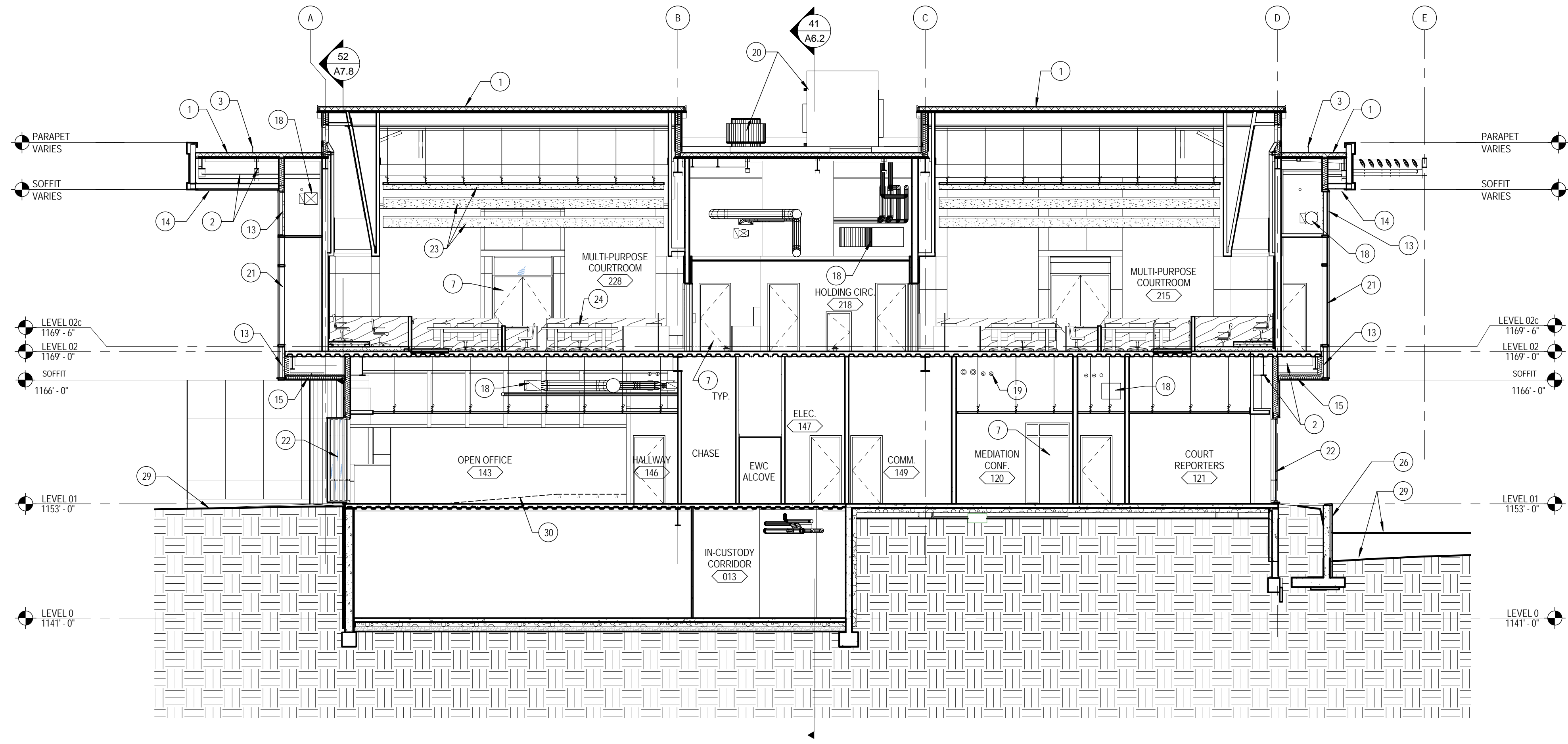


**LEGEND NOTES**

- 1 ROOFING SYSTEM - SEE ROOF PLAN
- 2 STEEL BRACE - SEE STRUCTURAL DRAWINGS
- 3 SAFETY CABLE RAIL - SEE ROOF PLAN
- 4 STONE COPING
- 5 WALL OPENING
- 6 WINDOW AS SCHEDULED
- 7 DOOR AS SCHEDULED
- 8 GLASS RAIL
- 9 SKYLIGHT
- 10 OPEN TO BEYOND
- 11 SKYLIGHT TENSION SHADING DEVICE
- 12 SUSPENDED ACOUSTICAL PLASTER CEILING
- 13 SHADOW BOX
- 14 METAL PANEL SOFFIT
- 15 EXTERIOR PLASTER SOFFIT
- 16 HANDRAIL
- 17 ELECTRIC WATER COOLER (EWC) - SEE PLUMBING DRAWINGS
- 18 MECHANICAL DUCTWORK
- 19 PIPING - SEE PLUMBING AND FIRE PROTECTION DRAWINGS
- 20 MECHANICAL EQUIPMENT - SEE MECHANICAL DRAWINGS
- 21 ALUMINUM CURTAIN WALL SYSTEM
- 22 ALUMINUM STOREFRONT SYSTEM
- 23 SUSPENDED CURVED GYPSUM BOARD CEILING CLOUDS
- 24 FURNITURE
- 25 BENCH
- 26 PLANTER RETAINING WALL, ST-1
- 27 NOT USED
- 28 STEEL BEAM ENCLOSURE
- 29 FINISH GRADE
- 30 RAMP BEYOND



**23 LOBBY SECTION (EAST)**  
A6.1 SCALE: 1/8" = 1'-0"



**43 BUILDING SECTION**  
A6.1 SCALE: 1/8" = 1'-0"

90%  
CONSTRUCTION  
DOCUMENTS

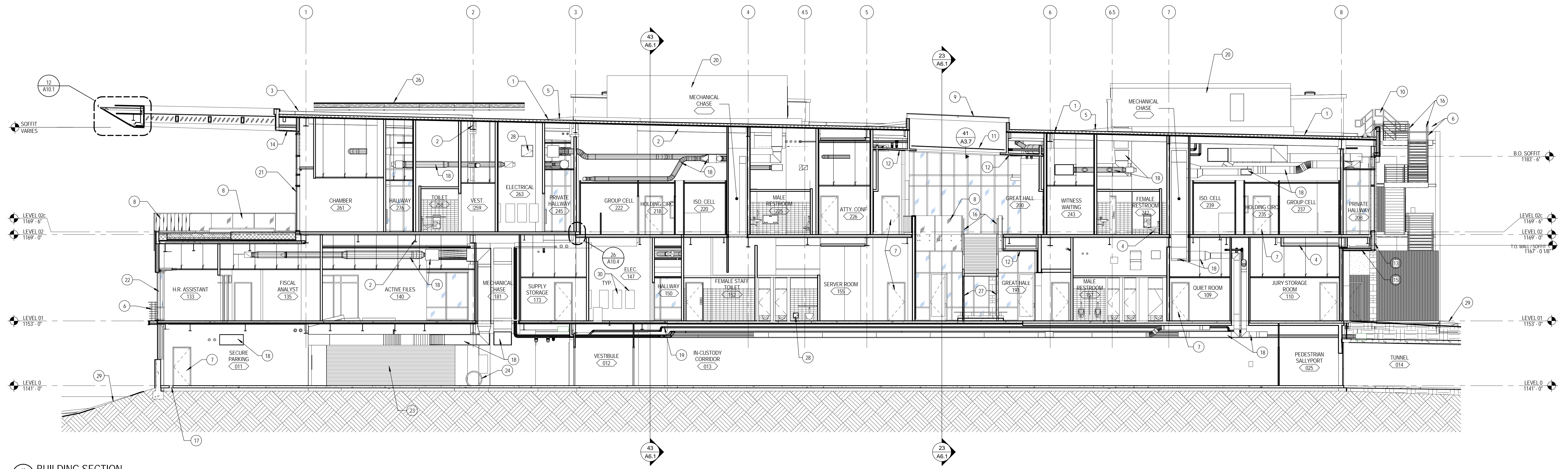
**BUILDING SECTIONS**  
Superior Court of California  
County of Calaveras - New San Andreas Court

**A6.1**  
75-09106  
8 / 30 / 2010  
Revisions

**DLR Group**  
Architecture Engineering Planning Interiors  
© 2010 DLR Group Inc. All rights reserved.

C:\Revit\5-08106-00\_Lobby\_A6\_2008.rvt  
10/4/2010 4:04:28 PM





41 BUILDING SECTION  
A6.2 SCALE: 1/8" = 1'-0"

LEGEND NOTES

- |   |                                      |
|---|--------------------------------------|
| 1 ROOFING SYSTEM - SEE ROOF PLAN                      | 22 ALUMINUM STOREFRONT SYSTEM        |
| 2 STEEL BRACE - SEE STRUCTURAL DRAWINGS               | 23 OVERHEAD COILING DOOR             |
| 3 SAFETY CABLE RAIL - SEE ROOF PLAN                   | 24 BIRE RACK                         |
| 4 STEEL BEAM RATED GWB ENCLOSURE                      | 25 BENCH                             |
| 5 ROOF DRAIN - SEE ROOF PLAN                          | 26 PV PANELS - SEE ROOF PLAN         |
| 6 GUARDRAIL   | 27 STEEL PIPE - STAIR SUPPORT COLUMN |
| 7 DOOR AS SCHEDULED                                   | 28 ACCESS PANEL                      |
| 8 GLASS RAIL  | 29 FINISH GRADE                      |
| 9 FIBERGLASS SANDWICH PANEL SKYLIGHT                  | 30 ELECTRICAL PANELS                 |
| 10 ROOF ACCESS STAIR                                  |                                      |
| 11 SKYLIGHT TENSION SHADING DEVICE                    |                                      |
| 12 SUSPENDED ACOUSTICAL PLASTER CEILING               |                                      |
| 13 SHADOW BOX   |                                      |
| 14 METAL PANEL SOFFIT                                 |                                      |
| 15 EXTERIOR PLASTER SOFFIT                            |                                      |
| 16 HANDRAIL   |                                      |
| 17 TRENCH DRAIN                                       |                                      |
| 18 MECHANICAL DUCTWORK                                |                                      |
| 19 PIPING - SEE PLUMBING AND FIRE PROTECTION DRAWINGS |                                      |
| 20 MECHANICAL EQUIPMENT - SEE MECHANICAL DRAWINGS     |                                      |
| 21 ALUMINUM CURTAIN WALL SYSTEM                       |                                      |





BUILDING EXTERIOR





BUILDING EXTERIOR





SUPERIOR COURT  
OF CALIFORNIA

TYPICAL COURTROOM INTERIOR





COURTROOM 3

GREAT HALL INTERIOR